



## HP LaserJet 2035 Plus

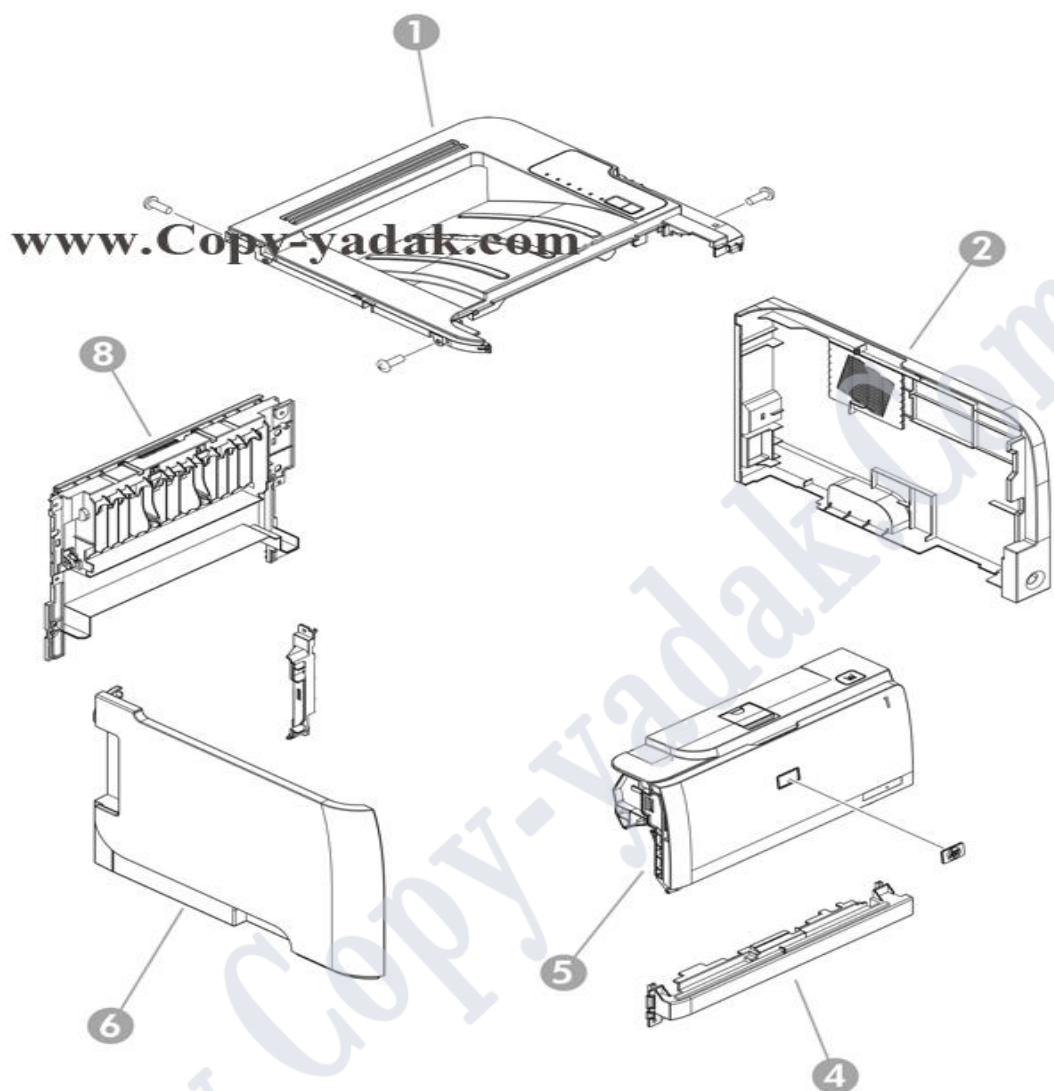


### Index:

- 1. External covers, panels, and doors HP LaserJet P2035**
- 2. External covers, panels, and doors HP LaserJet P2055**
- 3. Internal components 1 of 5**
- 4. Internal components 2 of 5**
- 5. Internal components 3 of 5**
- 6. Internal components 4 of 5**
- 7. Internal components 5 of 5**



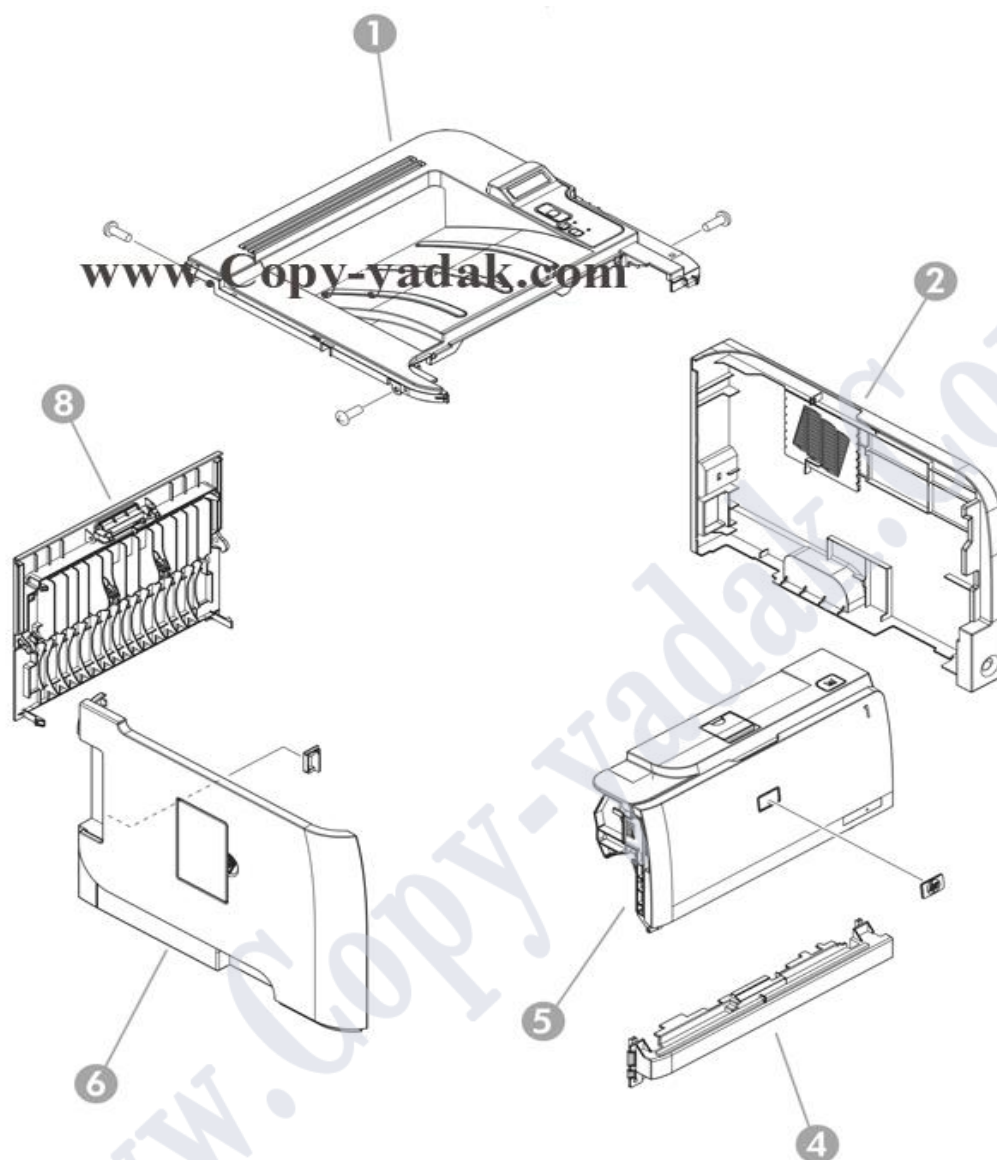
## 1-External covers, panels, and doors HP LaserJet P2035



Parts Number		Description
1	RM1-6435-000CN	Top-cover assembly (HP LaserJet P2035)
2	RC2-8280-000CN	Cover, right (HP LaserJet P2035)
4	RL1-2124-000CN	Cover, front (HP LaserJet P2035 and HP LaserJet P2055)
5	RM1-6434-000CN	Cartridge-door assembly (HP LaserJet P2035)
6	RM1-6437-000CN	Cover, left assembly (HP LaserJet P2035)
8	RM1-6440-000CN	Cover, rear assembly (HP LaserJet P2035)



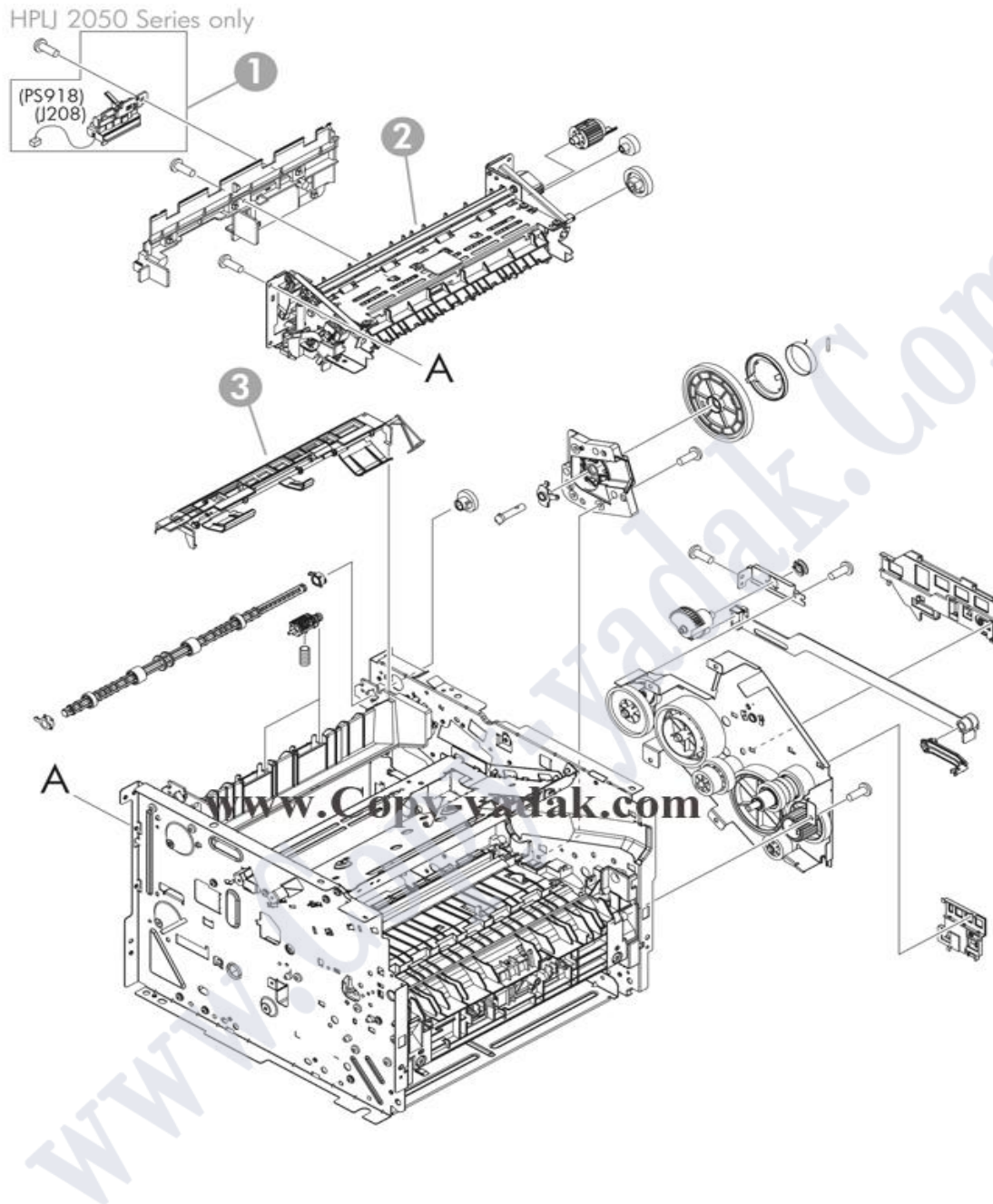
## 2-External covers, panels, and doors HP LaserJet P2055



Parts Number Description		
1	RM1-6429-000CN	Top-cover assembly (HP LaserJet P2055)
2	RC2-6254-000CN	Cover, right (HP LaserJet P2055)
4	RL1-2124-000CN	Cover, front (HP LaserJet P2035 and HP LaserJet P2055)
5	RM1-6425-000CN	Cartridge-door assembly (HP LaserJet P2055)
6	RM1-6428-000CN	Cover, left assembly (HP LaserJet P2055)
8	RM1-6444-000CN	Cover, rear assembly (HP LaserJet P2055)



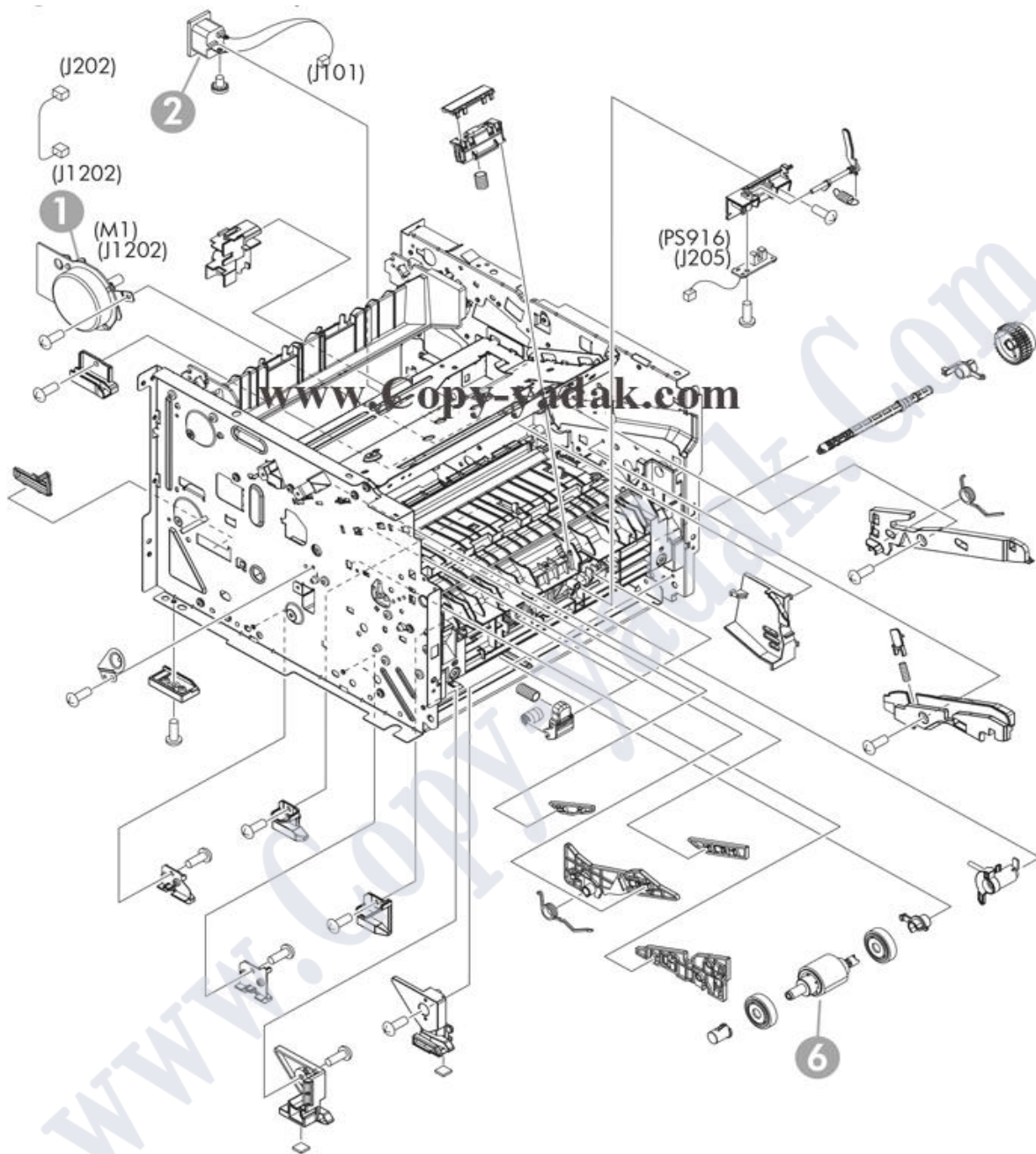
### 3-Internal components 1 of 5



Parts Number Description		
1	RM1-6445-000CN	Reverse-sensor assembly (HP LaserJet P2055)
2	RM1-6405-000CN	Fuser assembly (110 V to 127 V)
2	RM1-6406-000CN	Fuser assembly (220 V to 240 V)
3	RM1-6401-000CN	Paper-retaining-delivery assembly



## 4-Internal components 2 of 5

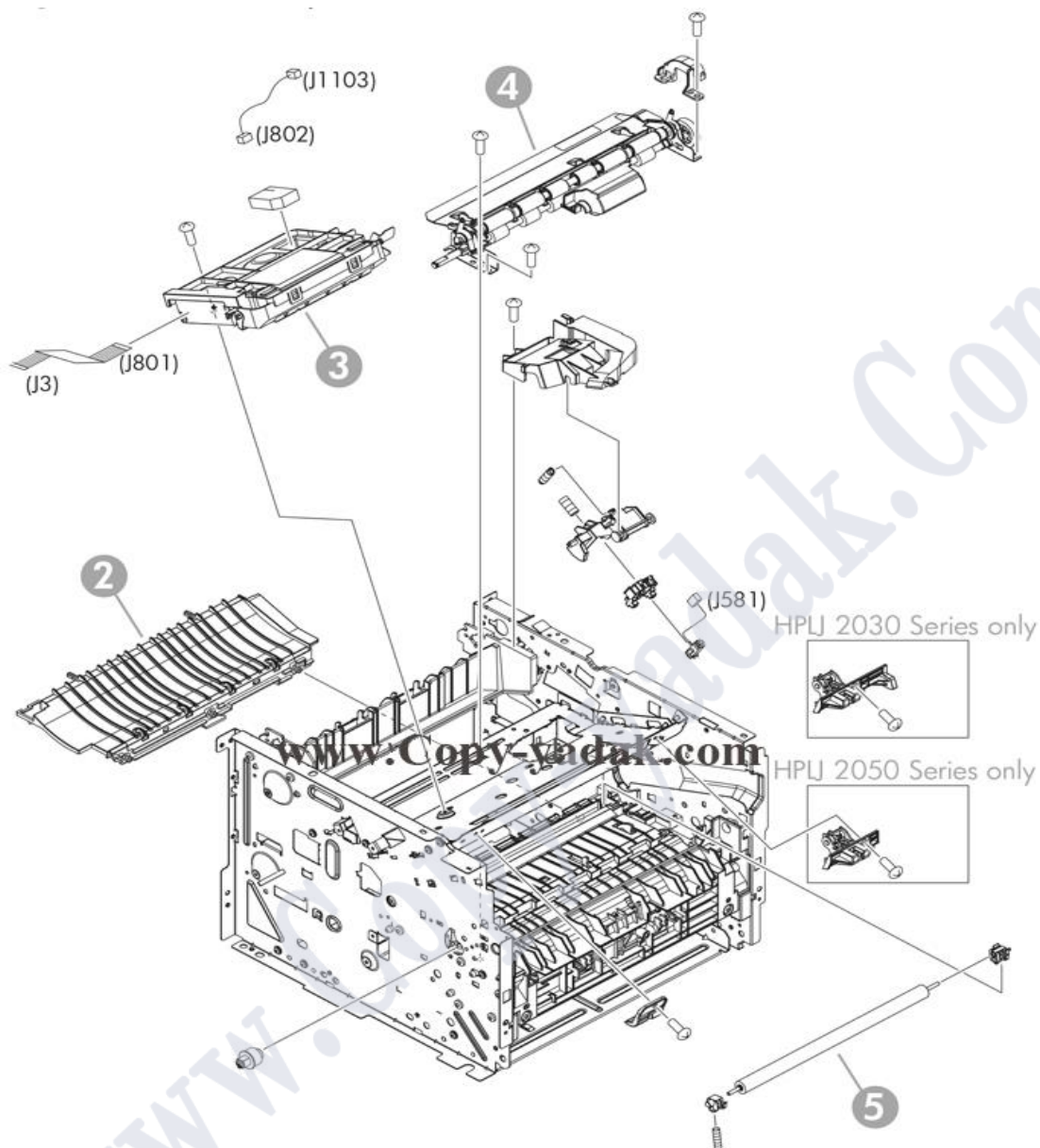


Parts Number Description		
1	RM1-6378-000CN	Main-motor
2	RM1-6375-000CN	Inlet-cable assembly
6	RM1-6414-000CN	Paper-pickup roller assembly



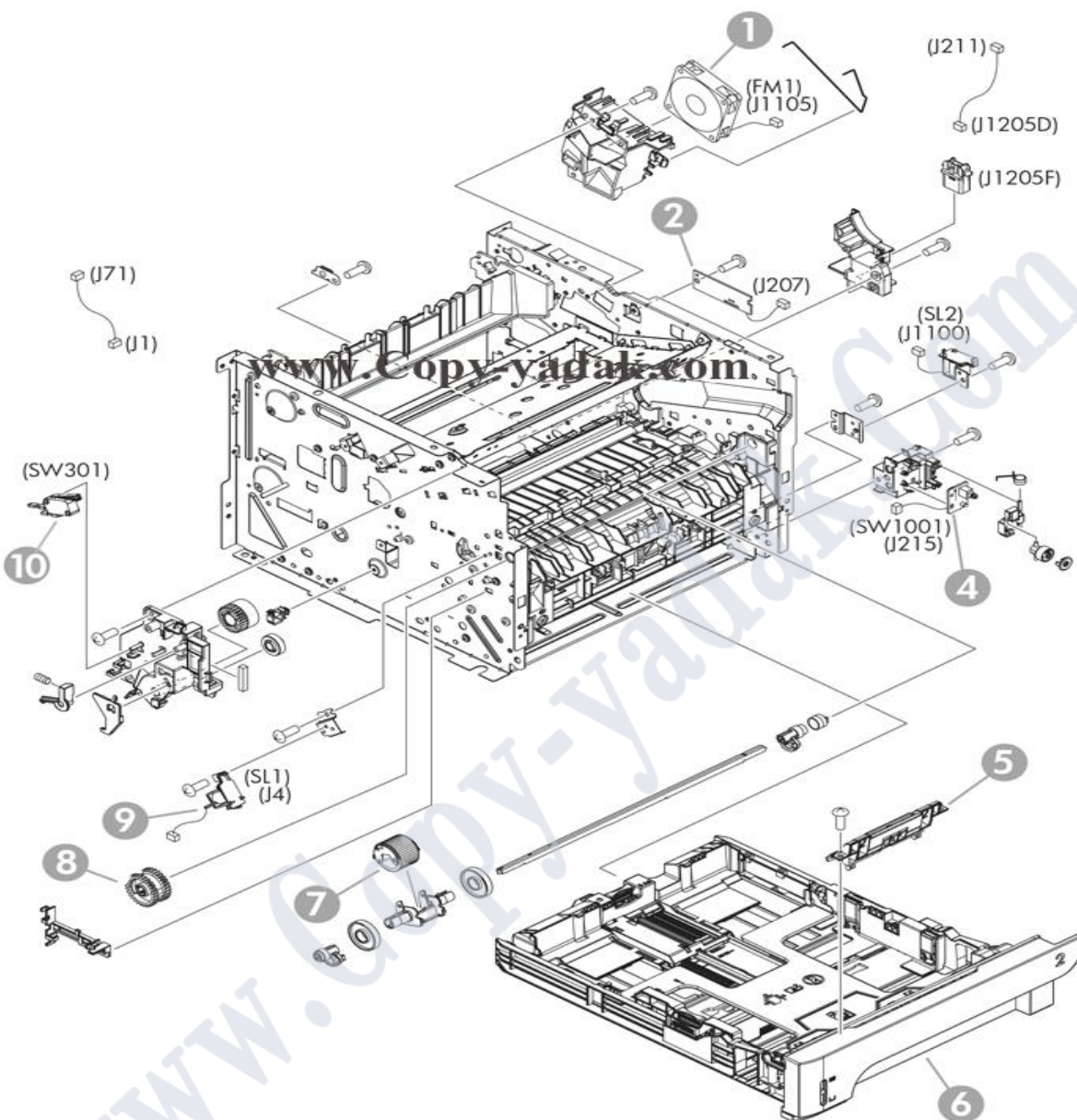


## 5-Internal components 3 of 5



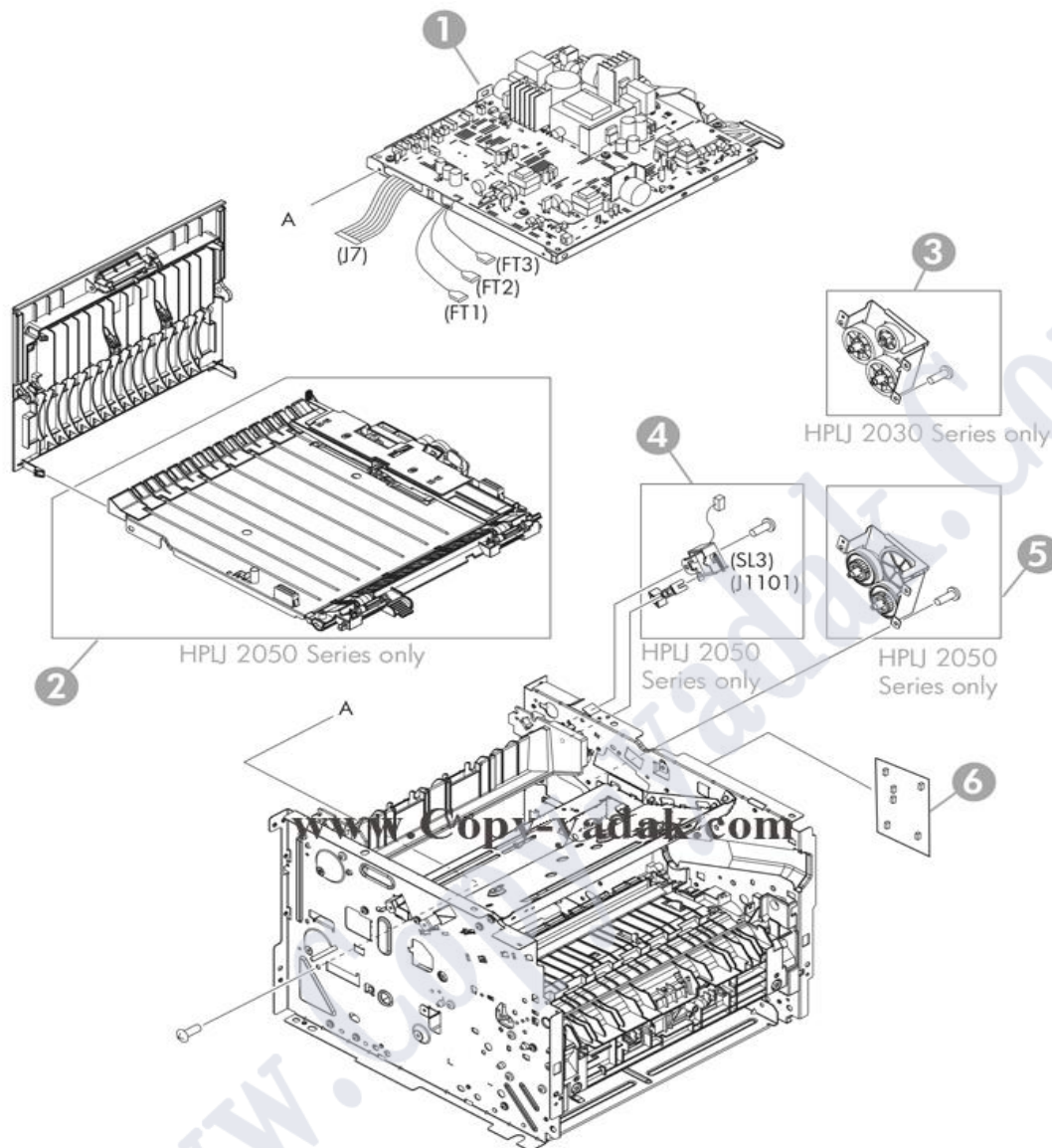
Parts Number		Description
2	RM1-6402-000CN	Paper-feed-guide assembly
3	RM1-6424-000CN	Laser/scanner assembly
4	RM1-6419-000CN	Registration assembly
5	RM1-6450-000CN	Transfer-roller assembly

## 6-Internal components 4 of 5



Parts Number		Description
1	RK2-2727-000CN	Fan
10	WC4-5171-000CN	Switch, push (SW301 cartridge-door interlock)
2	RM1-6346-000CN	Connecting PCA
4	RM1-6348-000CN	Power-switch PCA
5	RM1-6397-000CN	Separation-pad assembly (Tray 2)
6	RM1-6446-000CN	Cassette assembly (Tray 2 HP LaserJet P2035)
6	RM1-6394-000CN	Cassette assembly (Tray 2 HP LaserJet P2055)
7	RM1-6394-000CN	Roller, multipurpose pickup (Tray 1)
8	RM1-4275-000CN	Paper-pickup-gear assembly
9	RK2-2731-000CN	Solenoid (SL1 Tray 1)

## 7- Internal components 5 of 5



Parts Number	Description
1 RM1-6392-000CN	Engine-controller unit (ECU 110 V to 127 V)
1 RM1-6393-000CN	Engine-controller unit (ECU 220 V to 240 V)
2 RM1-6346-000CN	Duplexing-paper-feed assembly (HP LaserJet P2055)
3 RM1-6447-000CN	Face-down-drive assembly (HP LaserJet P2035)
4 RK2-27337-000CN	Solenoid (SL3 HP LaserJet P2055)
5 RM1-6423-000CN	Reverse-drive assembly (HP LaserJet P2055)
6 CC525-60001	Formatter (HP LaserJet P2035)
6 CC526-60001	Formatter (HP LaserJet P2035n)
6 CC527-60001	Formatter (HP LaserJet P2055d)
6 CC528-60001	Formatter (HP LaserJet P2055dn and HP LaserJet P2055x)