



HP LaserJet CP1215

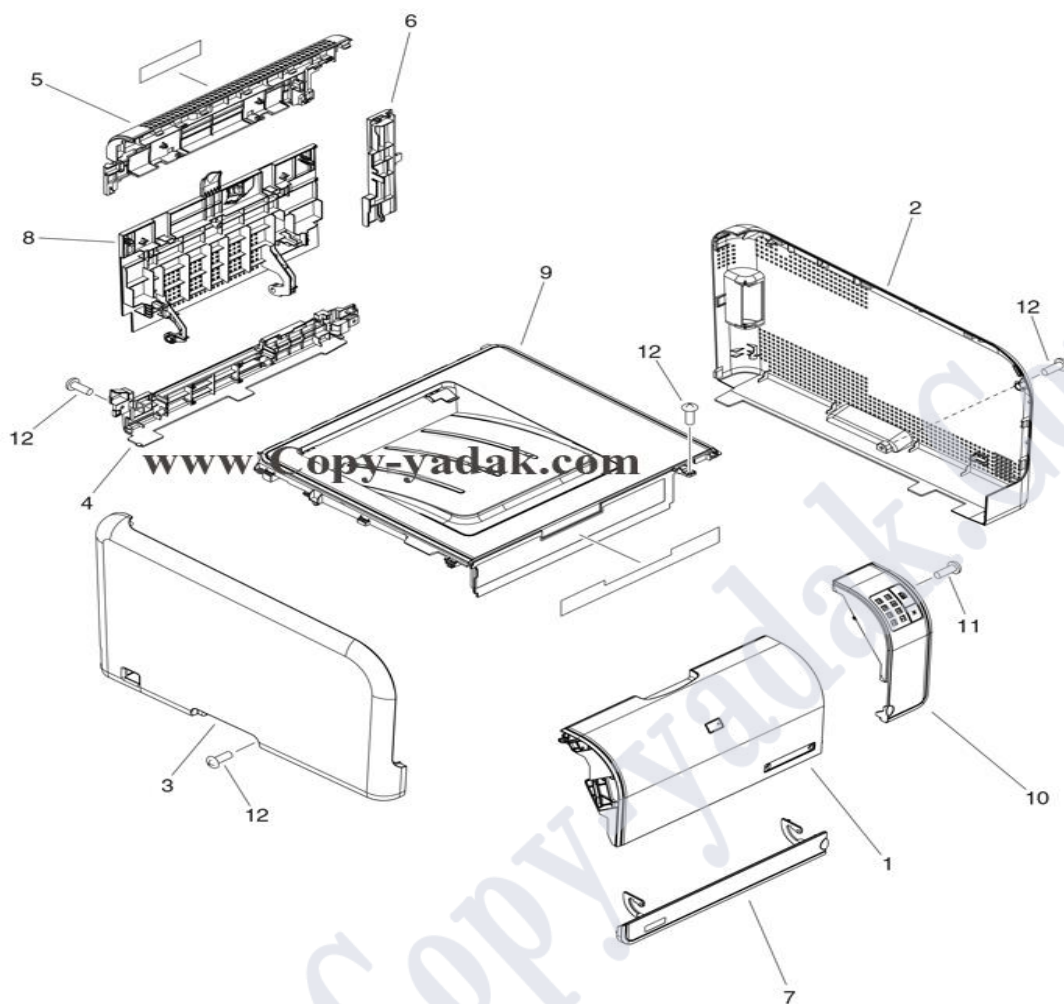


Index:

- 1. Covers, panels, and doors**
- 2. Covers, panels, and doors**
- 3. Internal components 1 of 4**
- 4. Internal components 2 of 4**
- 5. Internal components 3 of 4**
- 6. Internal components 4 of 4**
- 7. Cassette**
- 8. Fuser assembly**
- 9. PCAs**



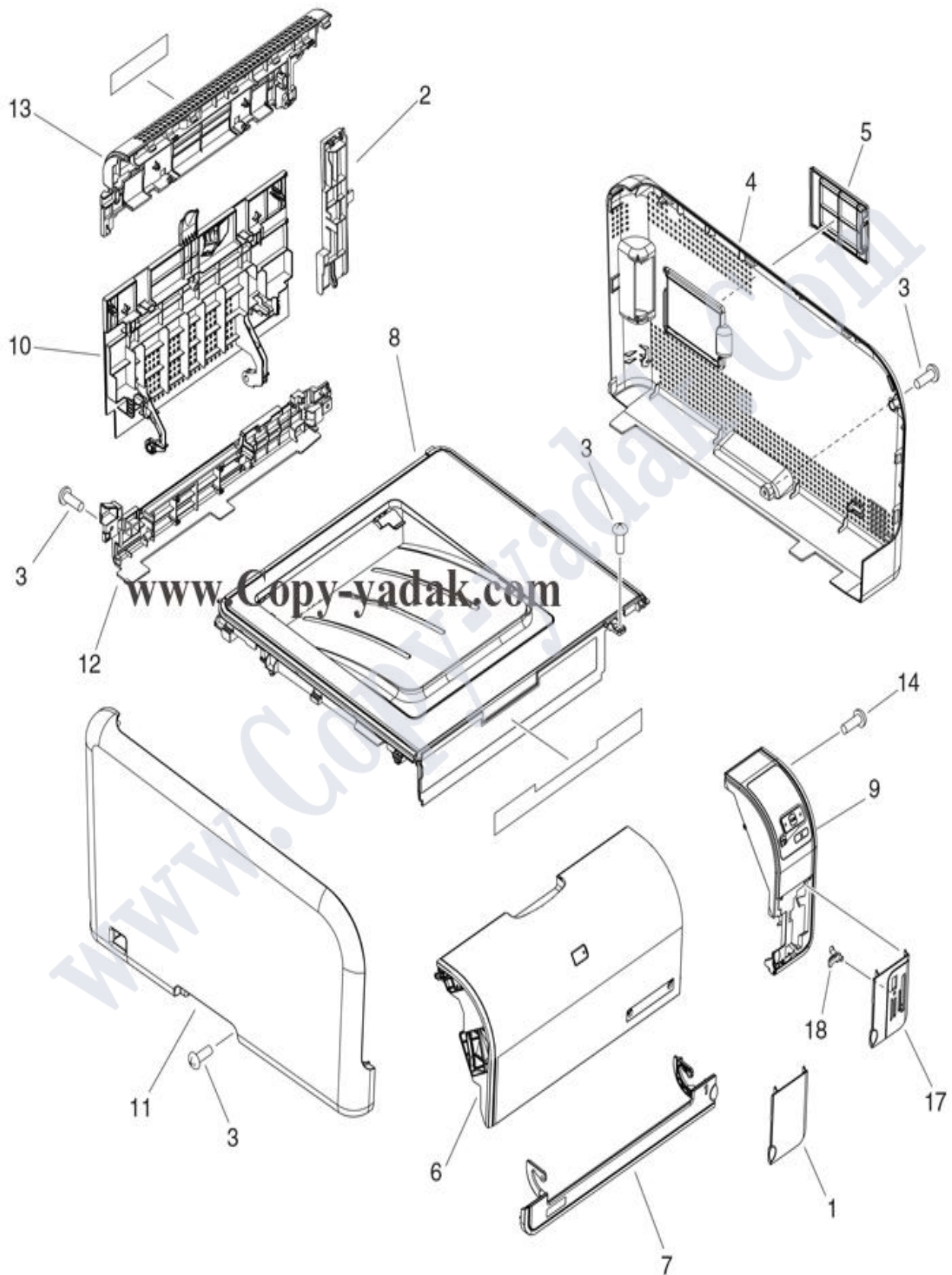
1-Covers, panels, and doors (HP Color LaserJet CP1210 Series Printer)



Parts Number Description		
1	RC2-1786-000CN	Door, front
10	RM1-4468-000CN	Control-panel assembly
11	XA9-1449-000CN	Screw, with washer, M3X8
12	XA9-1671-000CN	Screw, M3X8
2	RC2-1788-000CN	Cover, right
3	RC2-1789-000CN	Cover, left
4	RC2-1790-000CN	Cover, rear, lower
5	RC2-1791-000CN	Cover, rear, upper
6	RC2-2875-000CN	Cover, rear, center
7	RC2-2005-000CN	Cover, priority slot (jam-access door)
8	RC2-2115-000CN	Door, rear
9	RM1-4465-000CN	Cover, upper (top cover)



2-Covers, panels, and doors (HP Color LaserJet CP1510 Series Printer)

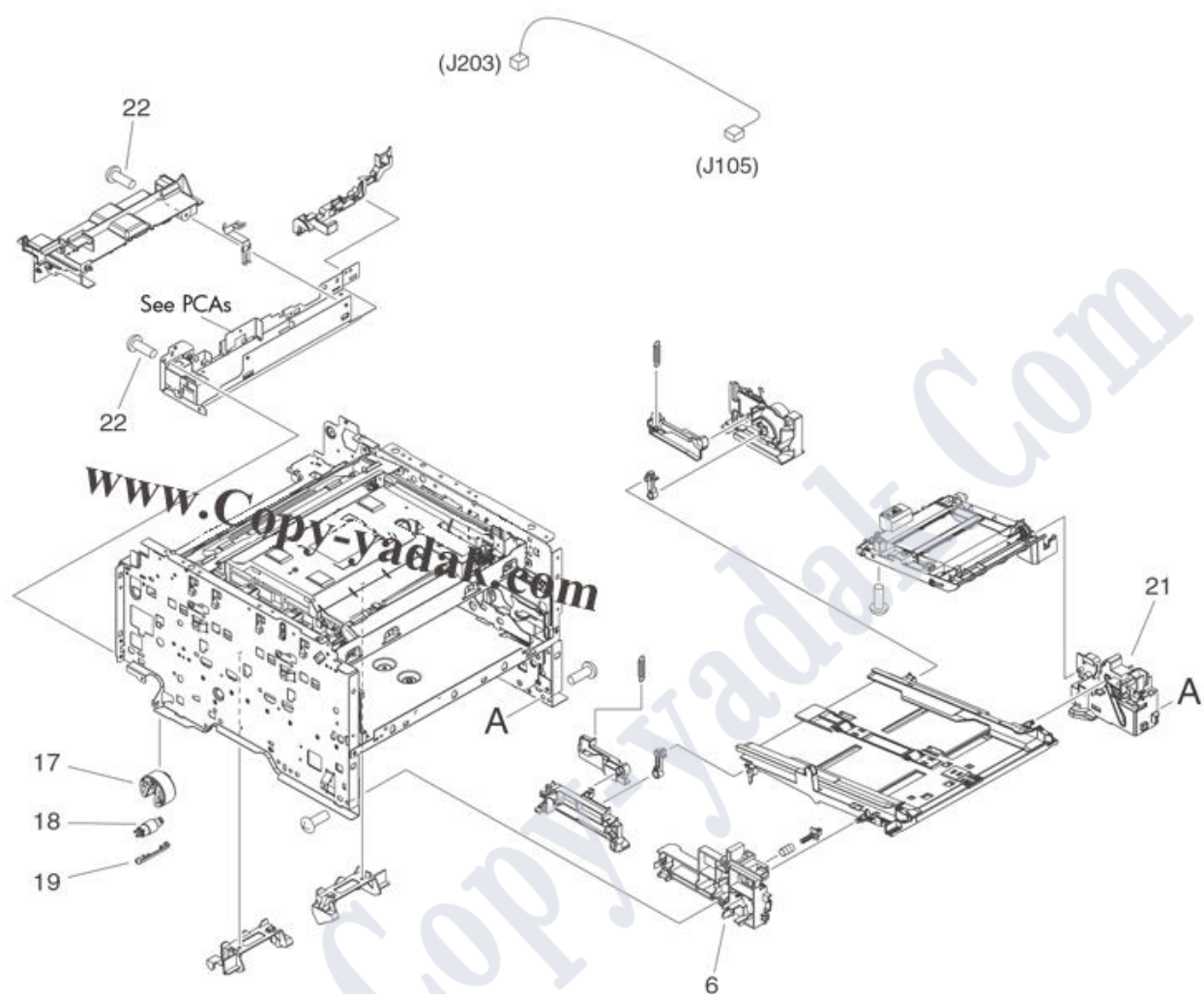




Parts Number		Description
1	RC2-3079-000CN	Cover, photo-card
10	RC2-3077-000CN	Door, rear
11	RC2-3073-000CN	Cover, left
12	RC2-3074-000CN	Cover, rear, lower
13	RC2-3075-000CN	Cover, rear, upper
14	XA9-1449-000CN	Screw, with washer, M3X8
17	RC2-2916-000CN	Cover, photo-card
18	RC2-3098-000CN	Guide, light
2	RC2-3076-000CN	Cover, rear, center
3	XA9-1671-000CN	Screw, M3X8
4	RC2-1797-000CN	Cover, right
5	RC2-1798-000CN	Cover, DIMM
6	RM1-4461-000CN	Door, front assembly
7	RM1-4463-000CN	Cover, priority slot
8	RM1-4466-000CN	Cover, upper (top cover)
9	RM1-4469-000CN	Control-panel assembly

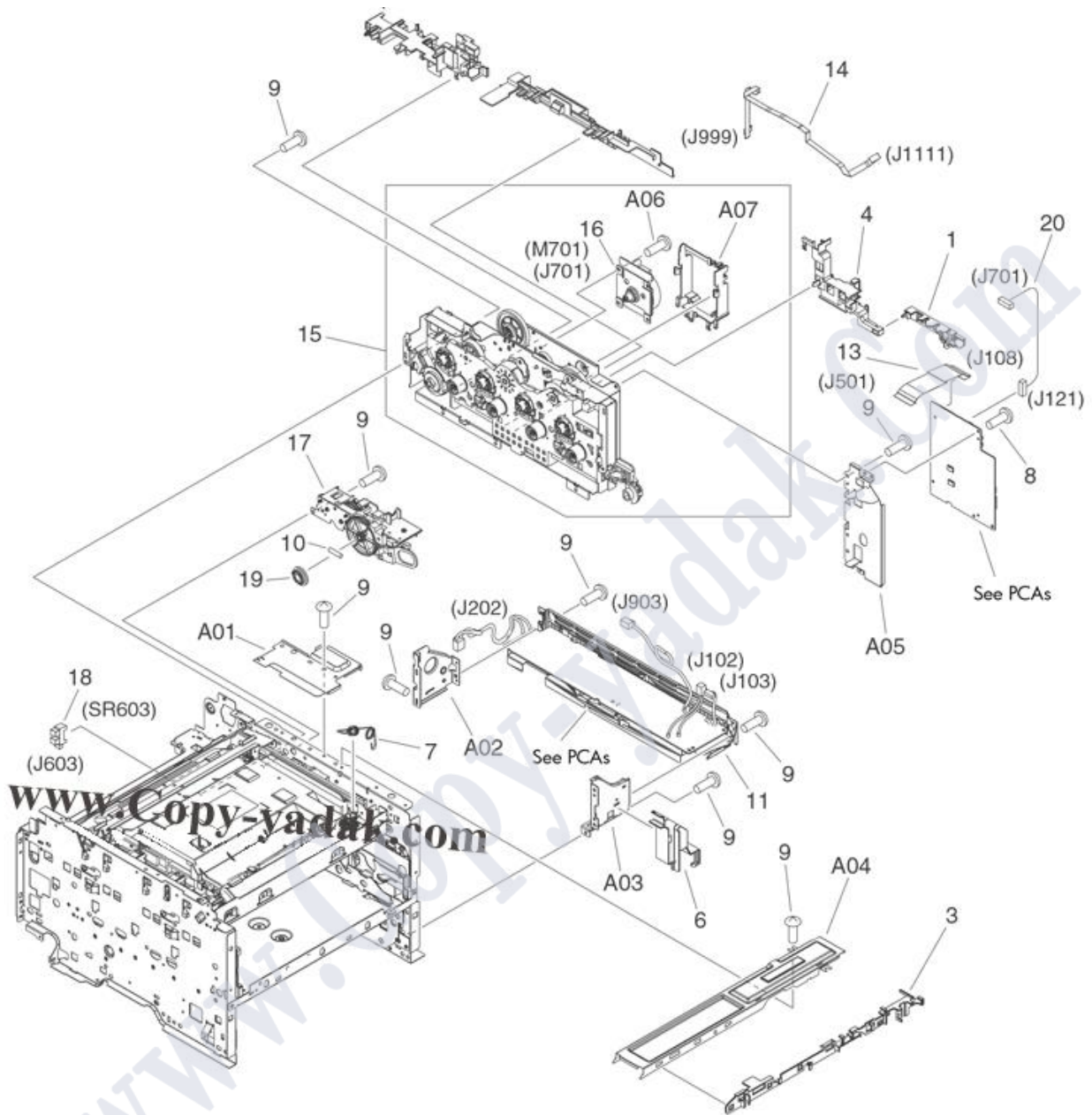


3-Internal components 1 of 4



Parts Number Description		
17	RM1-4426-000CN	Roller, pickup assembly
18	RM1-4425-000CN	Roller, separation assembly
19	RC2-2014-000CN	Cover, holder
21	RL1-1849-000CN	Rail, cassette, right-front
22	XA9-1671-000CN	Screw, M3X8
6	RC2-1878-000CN	Rail, cassette, left-front

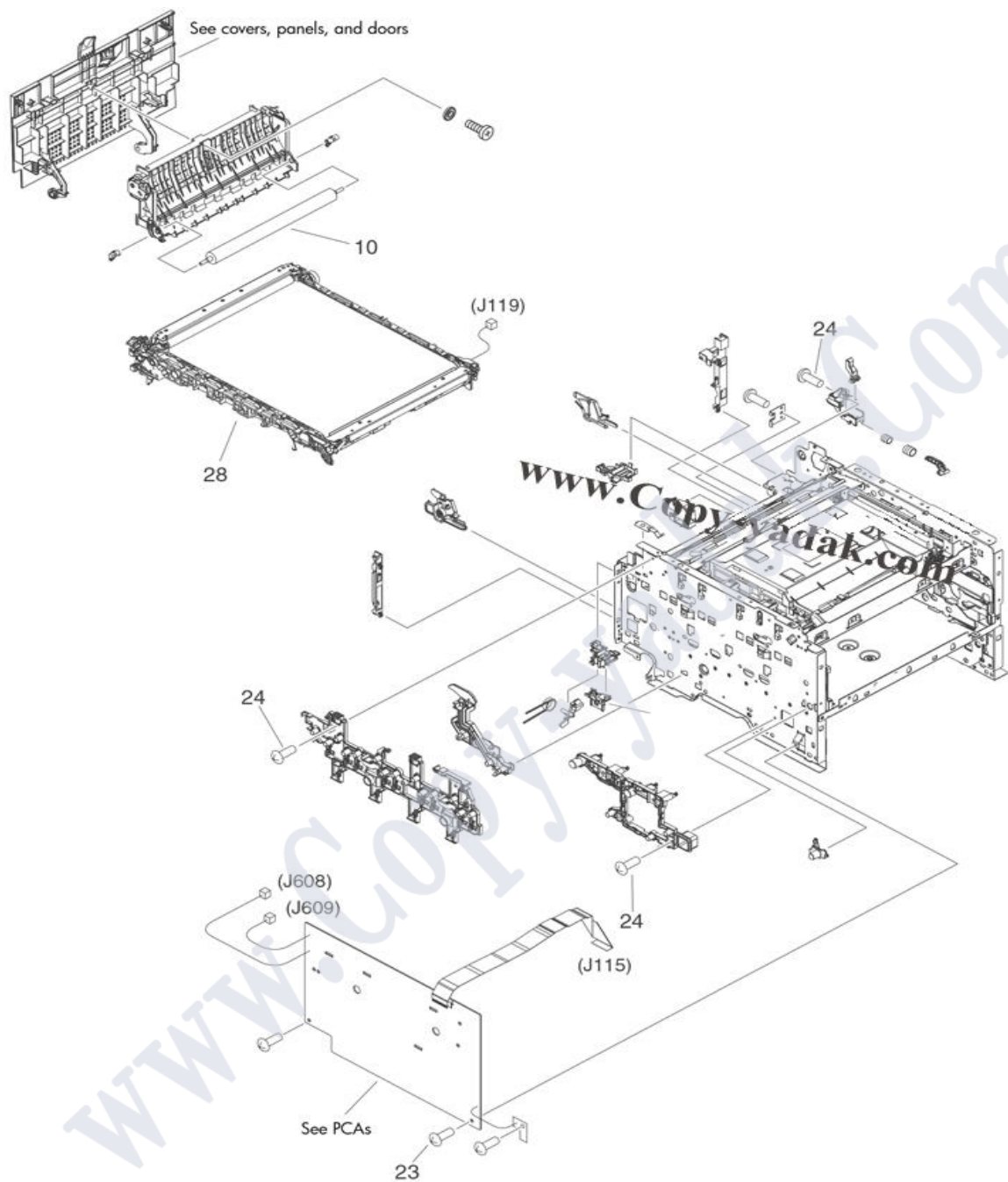
4-Internal components 2 of 4



Parts Number		Description
13	RK2-1955-000CN	Cable, flat (FFC)
14	RK2-1960-000CN	Cable, flat (FFC), HP Color LaserJet CP1210 Series
14	RK2-1959-000CN	Cable, flat (FFC), HP Color LaserJet CP1510 Series
8	XA9-1449-000CN	Screw, with washer, M3X8
9	XA9-1671-000CN	Screw, M3X8



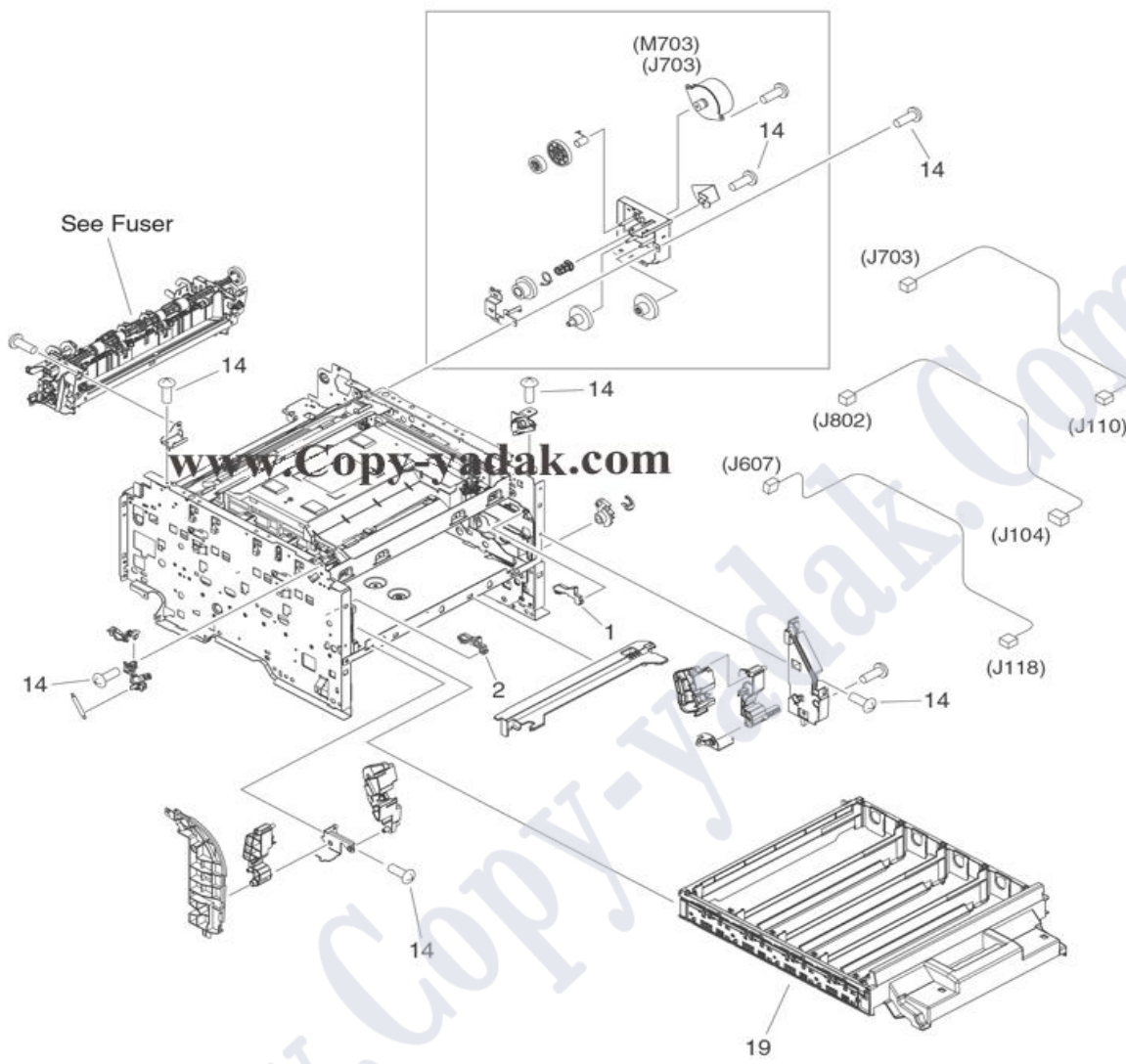
5-Internal components 3 of 4



Parts Number		Description
10	RM1-4445-000CN	Secondary transfer roller
23	XA9-1449-000CN	Screw, with washer, M3X8
24	XA9-1671-000CN	Screw, M3X8
28	RM1-4436-000CN	Intermediate transfer belt assembly (ITB)



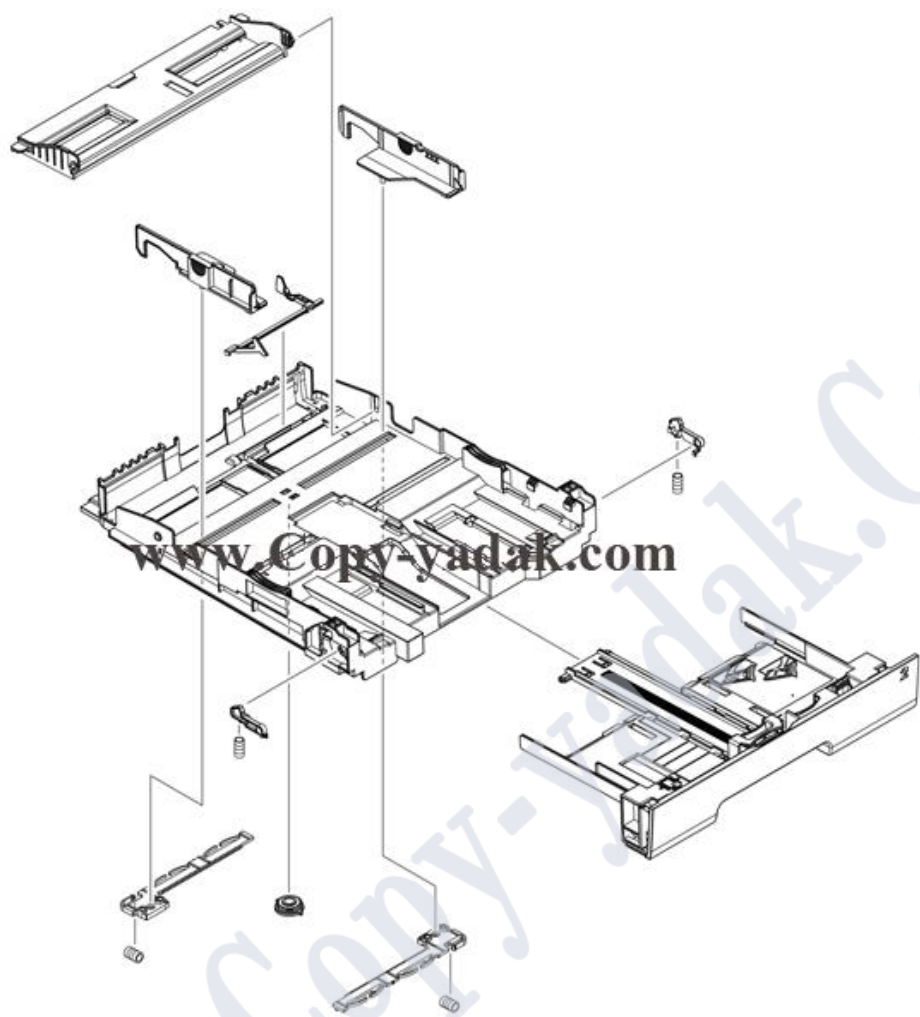
6-Internal components 4 of 4



Parts Number Description		
1	RC2-3109-000CN	Clamp, cartridge tray (drawer), right
14	XA9-1671-000CN	Screw, M3X8
19	RM1-4428-000CN	Cartridge tray assembly (drawer)
2	RC2-3108-000CN	Clamp, cartridge tray (drawer), left



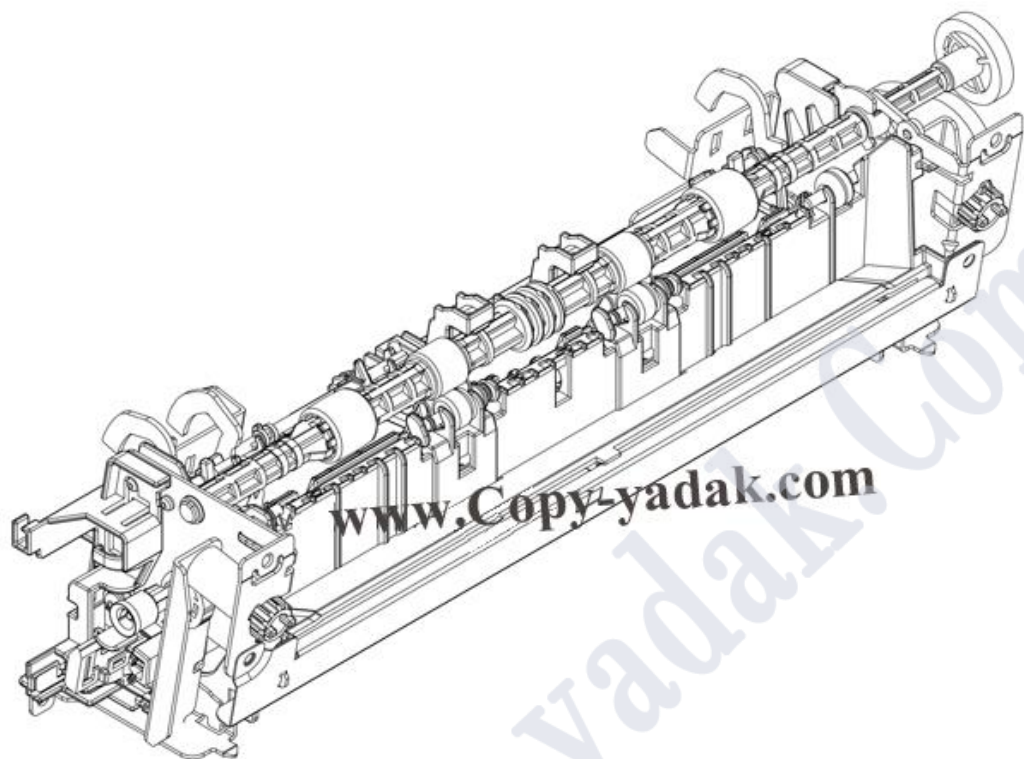
7- Cassette



Parts Number		Description
All	RM1-4439-000CN	Cassette, HP Color LaserJet CP1210
All	RM1-4440-000CN	Cassette, HP Color LaserJet CP1510



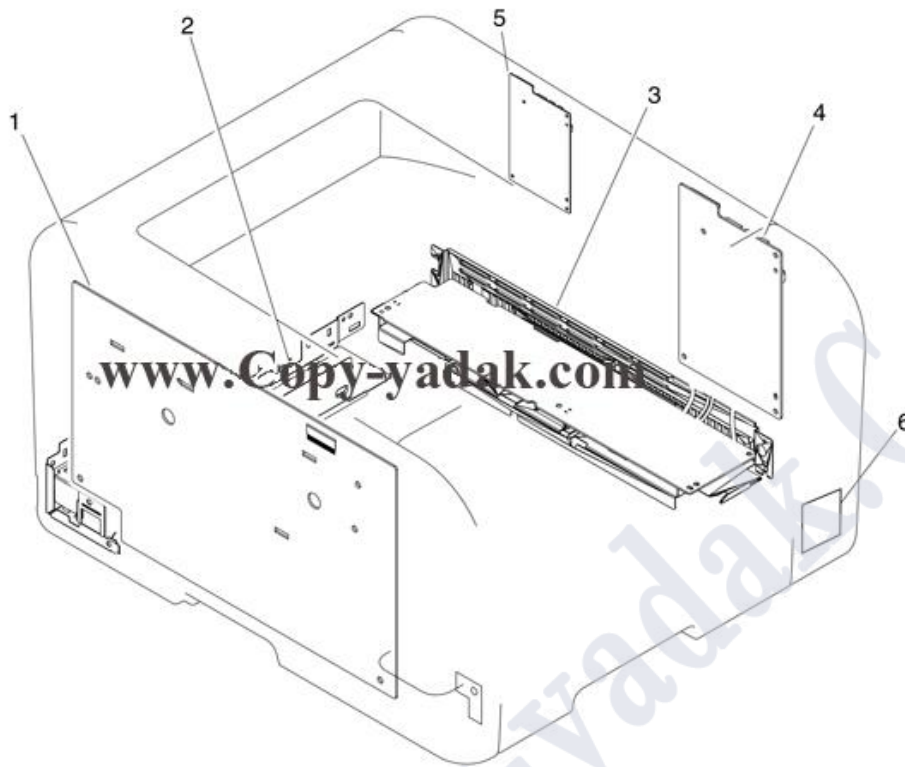
8-Fuser assembly



Parts Number Description		
All	RM1-4430-000CN	Fuser assembly (110V to 127V)
All	RM1-4431-000CN	Fuser assembly (220V to 240V)



9-PCAs



Parts Number		Description
1	RM1-4689-000CN	Power supply, high voltage assembly
2	RM1-4776-000CN	Power supply, fuser assembly (110V to 127V)
2	RM1-4777-000CN	Power supply, fuser assembly (220V to 240V)
3	RM1-4815-000CN	Power supply, low-voltage assembly (110V to 127V)
3	RM1-4816-000CN	Power supply, low-voltage assembly (220V to 240V)
4	RM1-4811-000CN	DC controller PCA, HP Color LaserJet CP1510 Series
4	RM1-4813-000CN	DC controller PCA, HP Color LaserJet CP1210 Series
5	CB505-60001	Formatter PCA, HP Color LaserJet CP1210 Series
5	CB479-60001	Formatter PCA, HP Color LaserJet CP1510 Series
6	CB434-600001	Photo-card reader PCA, HP Color LaserJet CP1510ni only