



## HP LaserJet 1100

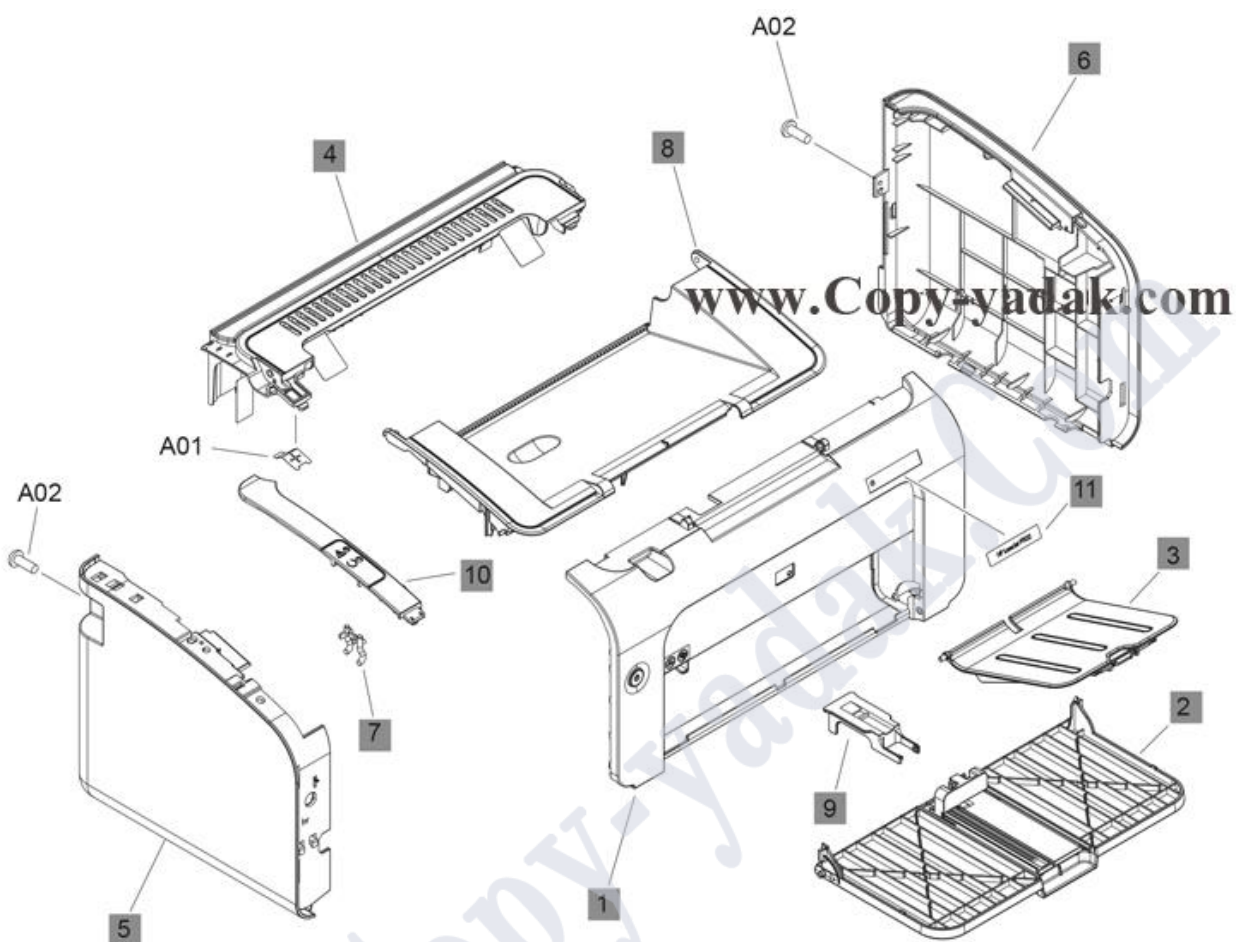


### Index:

- 1. Base model**
- 2. Wireless model**
- 3. Internal assemblies (1 of 3)**
- 4. Internal assemblies (2 of 3)**
- 5. Internal assemblies (3 of 3)**
- 6. PCAs**



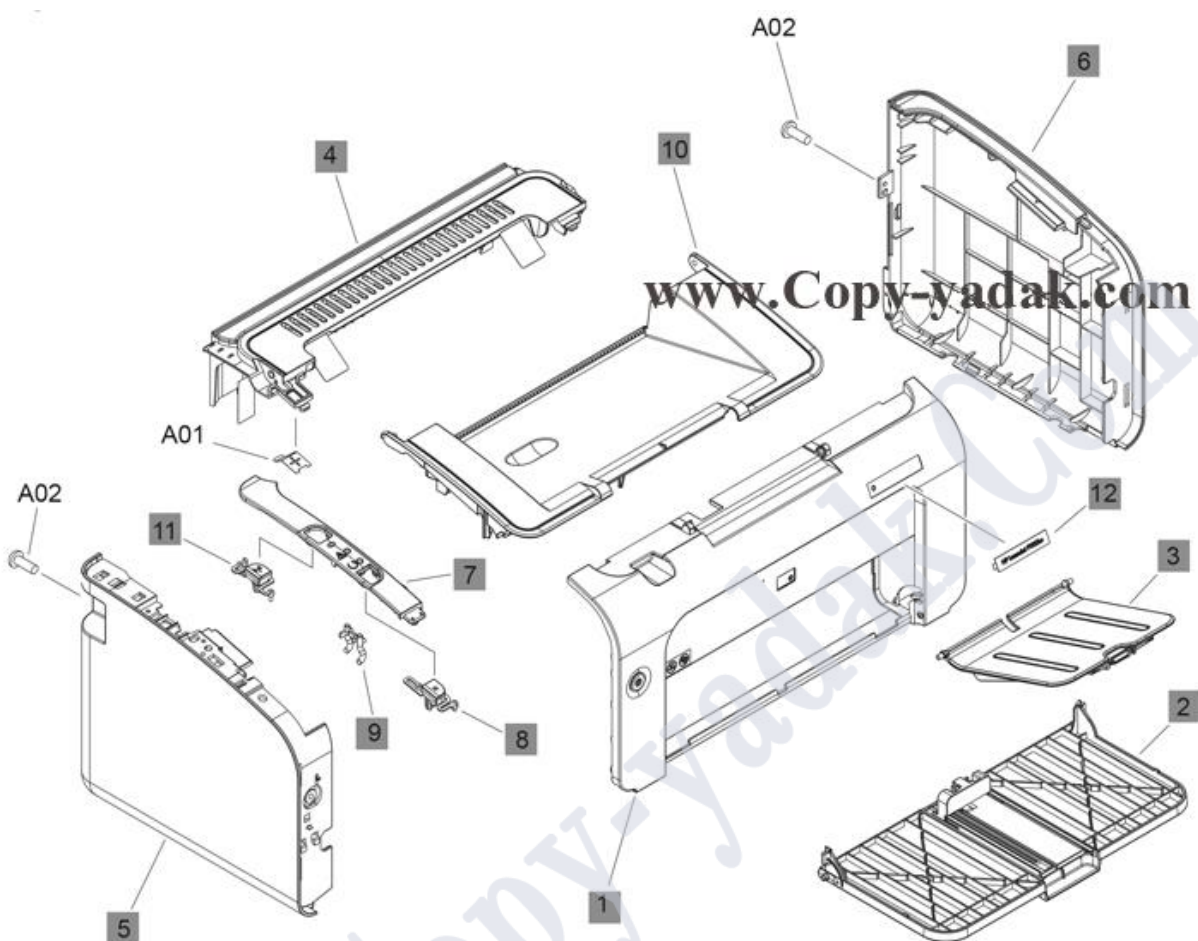
## 1-Base model



Parts Number Description		
1	RM1-6891-000CN	Front cover
10	RL1-2991-000CN	Plate, left
11	RC3-0540-000CN	Plate, name
2	RM1-6899-000CN	Paper pickup tray assembly
3	RM1-6902-000CN	Paper delivery tray assembly
4	RM1-6889-000CN	Face-down cover assembly
5	RM1-6875-000CN	Left cover assembly
6	RM1-6890-000CN	Right cover assembly
7	RC2-1108-000CN	Pipe, light
8	RC2-9237-000CN	Door, print cartridge
9	RC2-9244-000CN	Stopper, paper



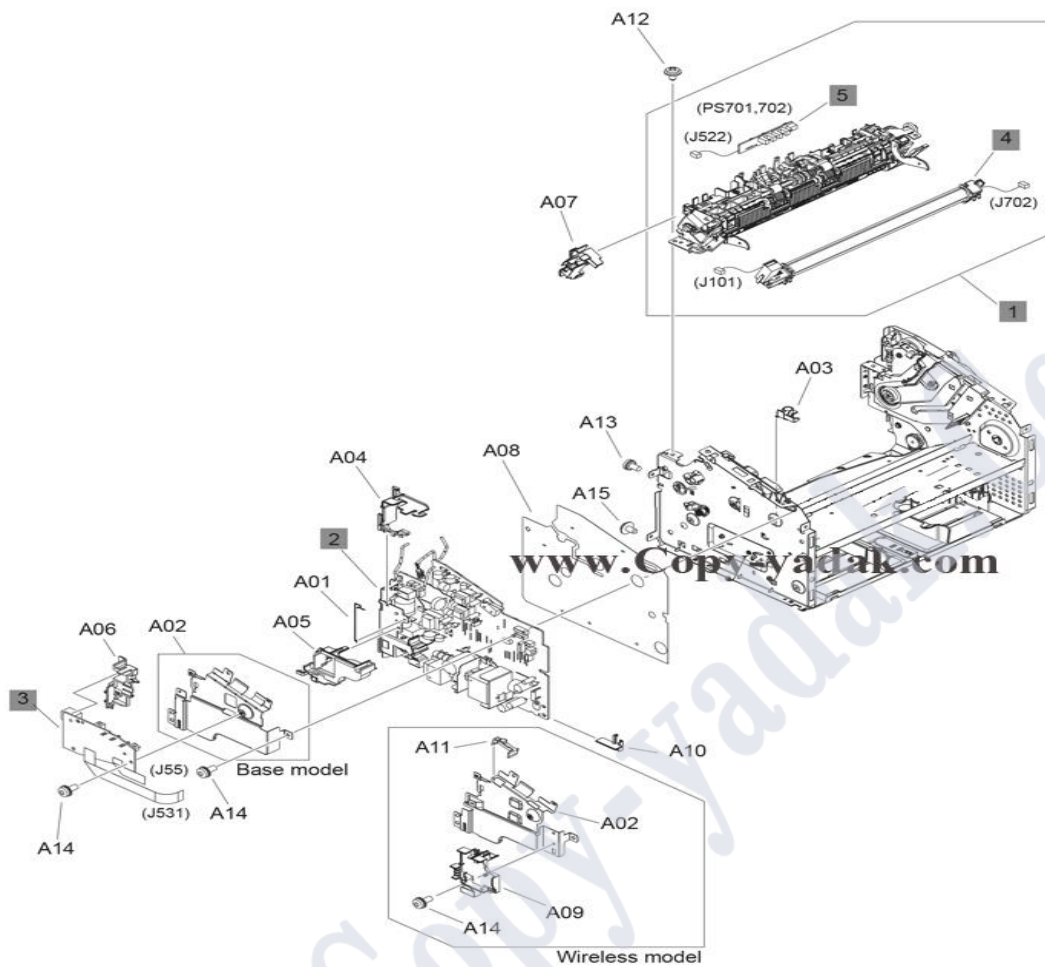
## 2-Wireless model



Parts Number		Description
1	RM1-6894-000CN	Front cover
10	RC3-0492-000CN	Door, print cartridge
11	RC3-0495-000CN	Button, Wi-Fi
12	RC3-0543-000CN	Plate, name
12	CE657-00001	Plate, name (for Brazil)
2	RM1-6901-000CN	Paper pickup tray assembly
3	RM1-6903-000CN	Paper delivery tray assembly
4	RM1-6892-000CN	Face-down cover assembly
5	RM1-6895-000CN	Left cover assembly
6	RM1-6893-000CN	Right cover assembly
7	RL1-2993-000CN	Plate, left
8	RC2-9238-000CN	Button, cancel
9	RC3-0514-000CN	Pipe, light



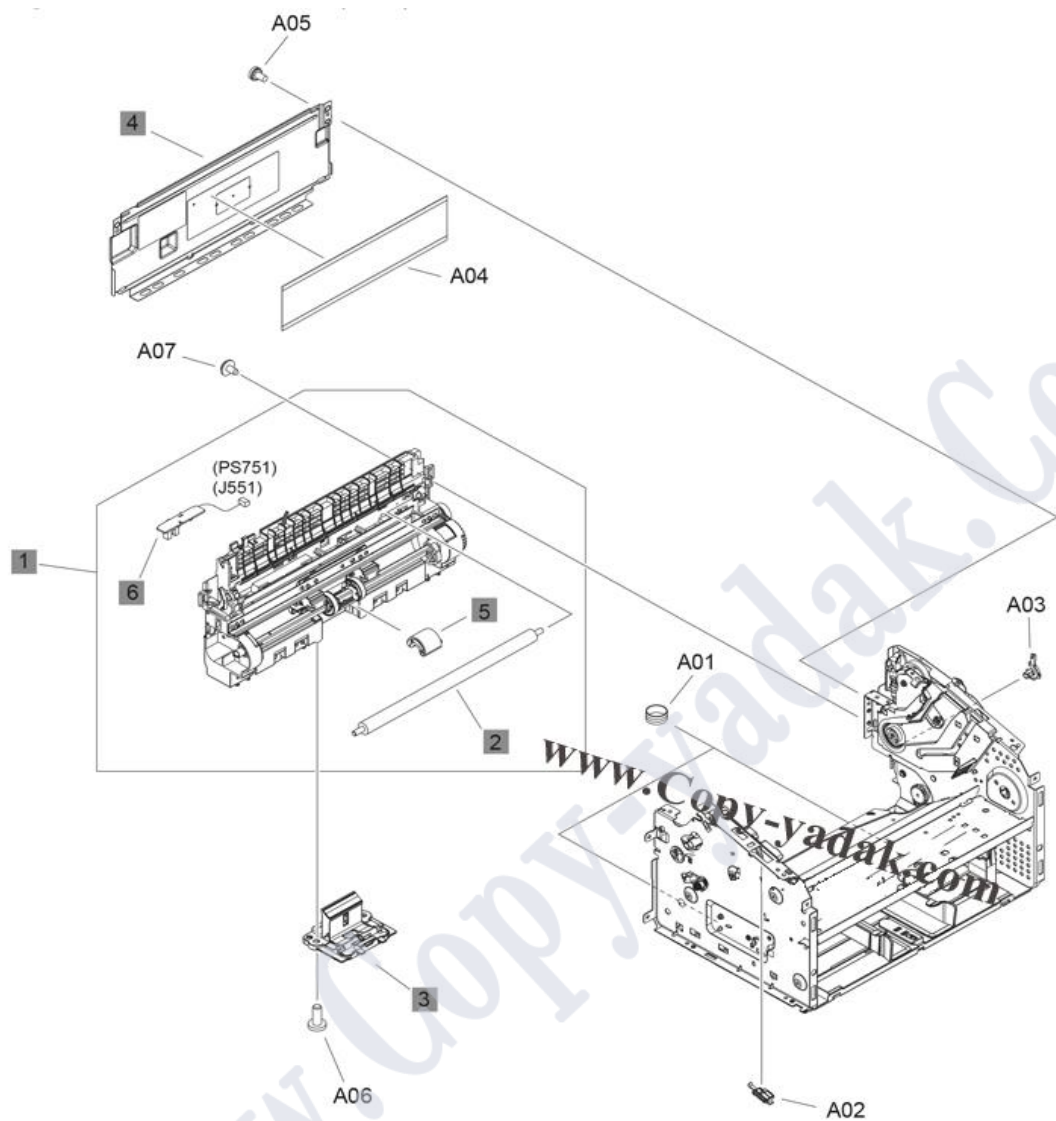
### 3-Internal assemblies (1 of 3)



Parts Number		Description
1	RM1-6920-000CN	Fuser delivery assembly (110 V)
1	RM1-6921-000CN	Fuser delivery assembly (220 V)
2	RM1-7591-000CN	Engine controller PCA, base model (220 V)
2	RM1-7595-000CN	Engine controller PCA, wireless model (110 V)
2	RM1-7596-000CN	Engine controller PCA, wireless model (220 V)
3	RM1-7601-000CN	Formatter PCA, wireless model
3	RM1-7600-000CN	Formatter PCA, base model
4	RM1-6872-000CN	Fuser film assembly (110 V)
4	RM1-6873-000CN	Fuser film assembly (220 V)
5	RM1-8066-000CN	Delivery sensor PCA assembly



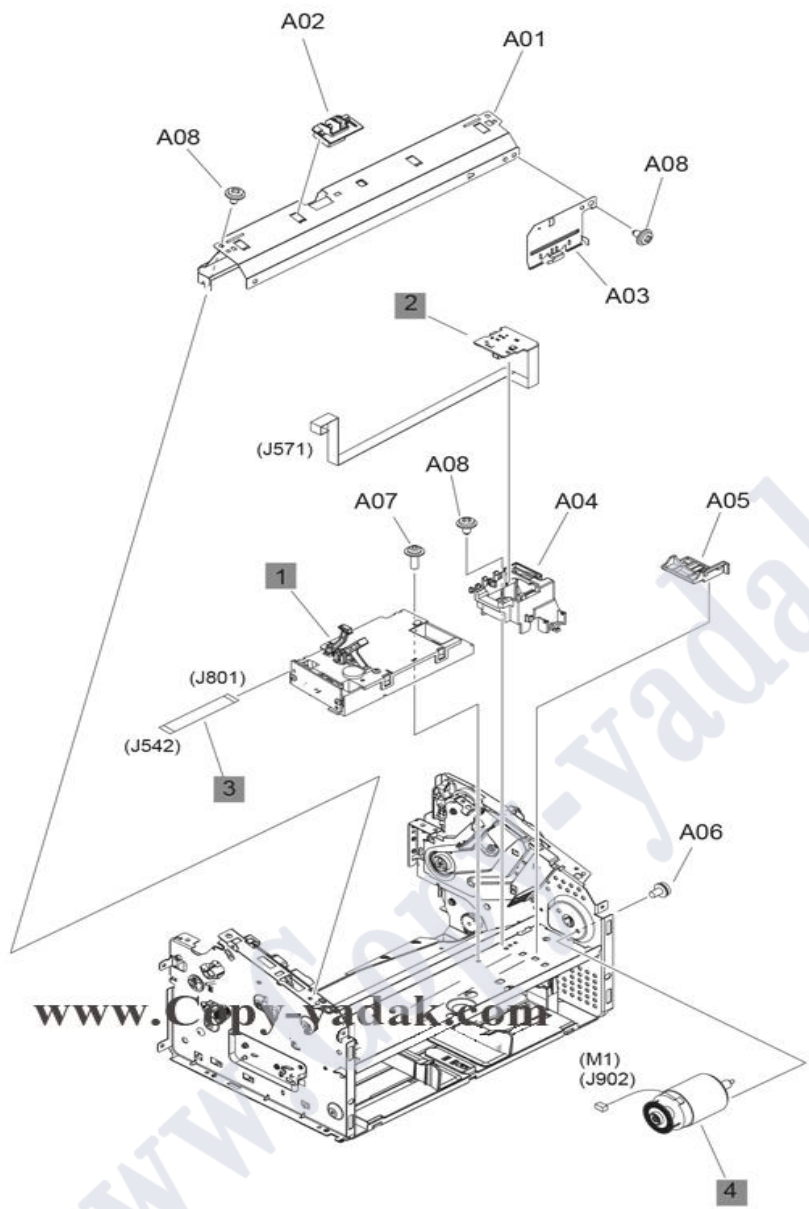
4-Internal assemblies (2 of 3)



Parts Number		Description
1	RM1-6880-000CN	Pickup transfer frame assembly, base model
1	RM1-6915-000CN	Pickup transfer frame assembly, wireless mode
2	RM1-4023-000CN	Transfer roller
3	RM1-4006-000CN	Separation pad assembly
4	RC2-1123-000CN	Panel, rear
5	RL1-2593-000CN	Roller, paper pickup
6	RM1-7593-000CN	Paper pickup sensor PCA assembly, base model
6	RM1-7598-000CN	Paper pickup sensor PCA assembly, wireless model



5-Internal assemblies (3 of 3)

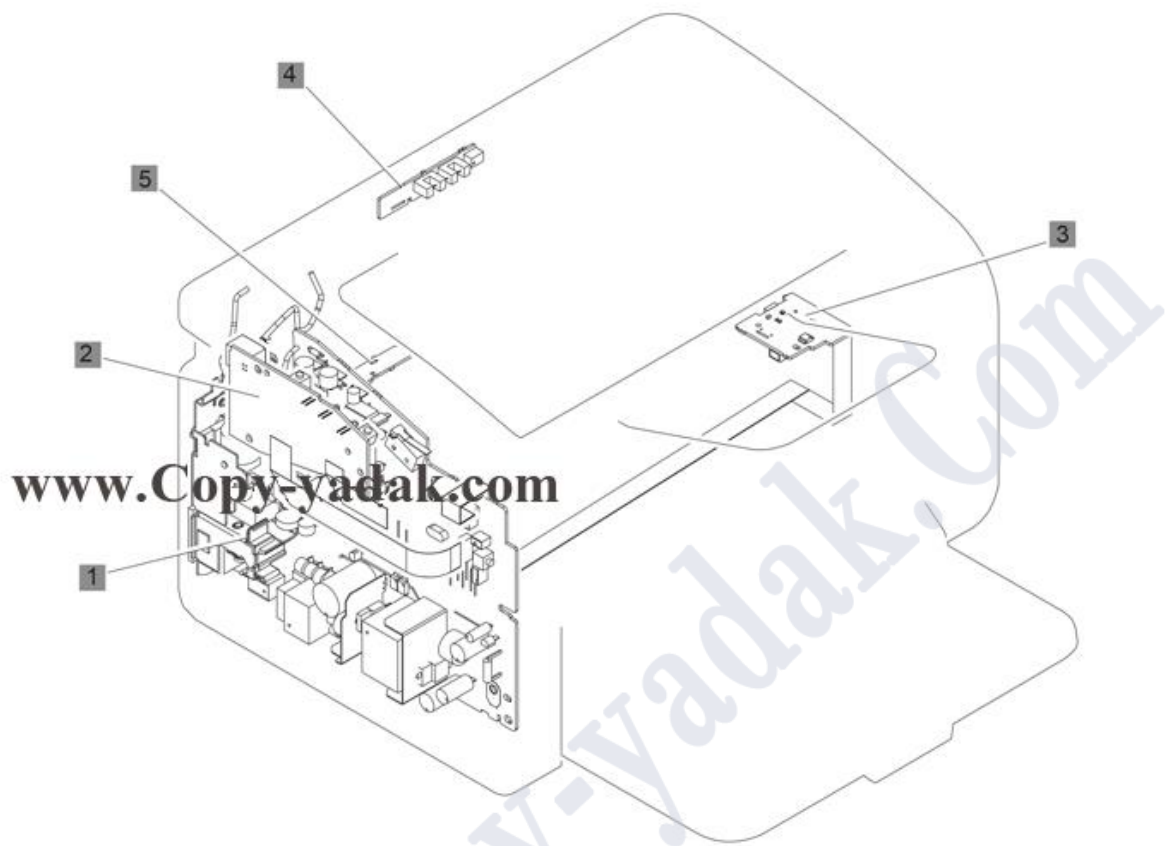


Parts Number Description		
1	RM1-6878-000CN	Laser/scanner assembly
2	RM1-7594-000CN	Motor PCA, base model
2	RM1-7599-000CN	Motor PCA, wireless model
3	RM1-7604-000CN	Cable, flat (FFC)
4	RL1-2591-000CN	Motor, DC24V





## 6-PCAs



Parts Number		Description
1	RM1-7591-000CN	Engine controller PCA, base model (220 V)
1	RM1-7596-000CN	Engine controller PCA, wireless model (220 V)
2	RM1-7600-000CN	Formatter PCA, base model
2	RM1-7601-000CN	Formatter PCA, wireless model
2	CE670-60001	Formatter PCA, wireless model (for Brazil)
3	RM1-7599-000CN	Motor PCA, wireless model
3	RM1-7594-000CN	Motor PCA, base model
4	RM1-8066-000CN	Delivery sensor PCA assembly
5	RM1-7593-000CN	Paper pickup sensor PCA assembly, base model
5	RM1-7598-000CN	Paper pickup sensor PCA assembly, wireless model
	CE867-60001CN	Wireless PCA