



HP Laser jet P1005 printer

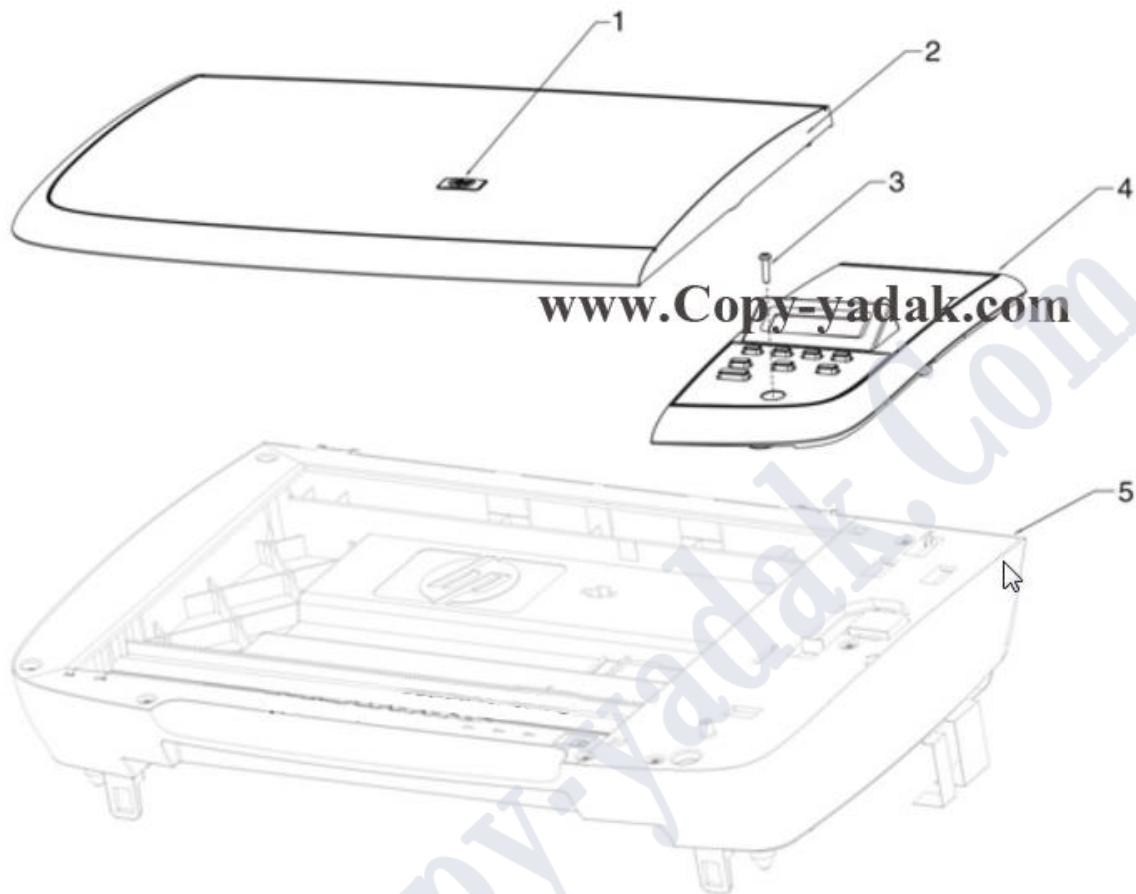


index:

- 1. Scanner assembly**
- 2. formatter assembly**
- 3. Whole unit replacement part**
- 4. Pickup- and delivery-tray assemblies**
- 5. External covers**
- 6. internal components**
- 7. internal components**
- 8. internal component**
- 9. Paper-pickup assembly**
- 10. fuser assembly**



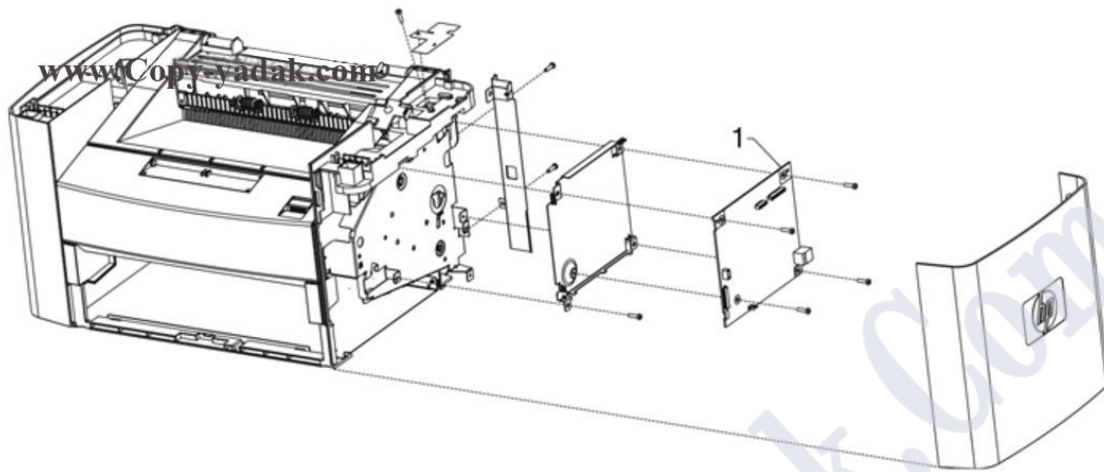
1.Scanner assembly



Parts Number Description		
1	71218285	HP jewel
2	CB37660105	Scanner lid
3	05154671	Screw
4	CB37660101	Control panel
5	CB376-67901	LJM1005 scanner assembly



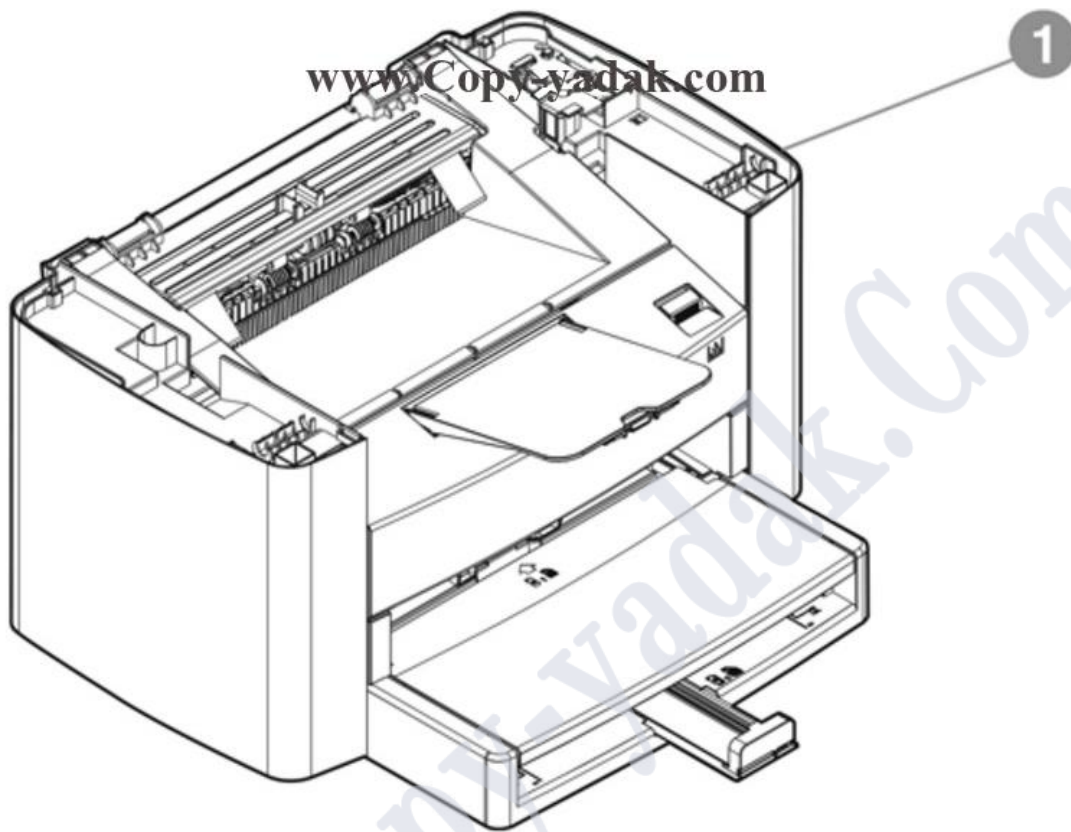
2.formatter assembly



Parts Number		Description
1	CB397-60001	Formatter



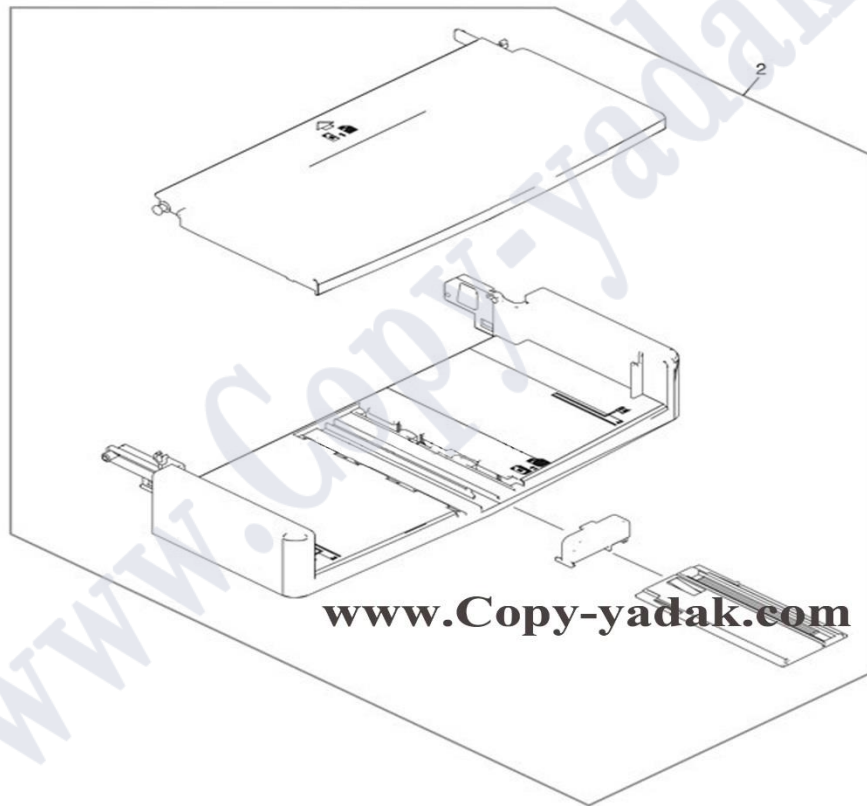
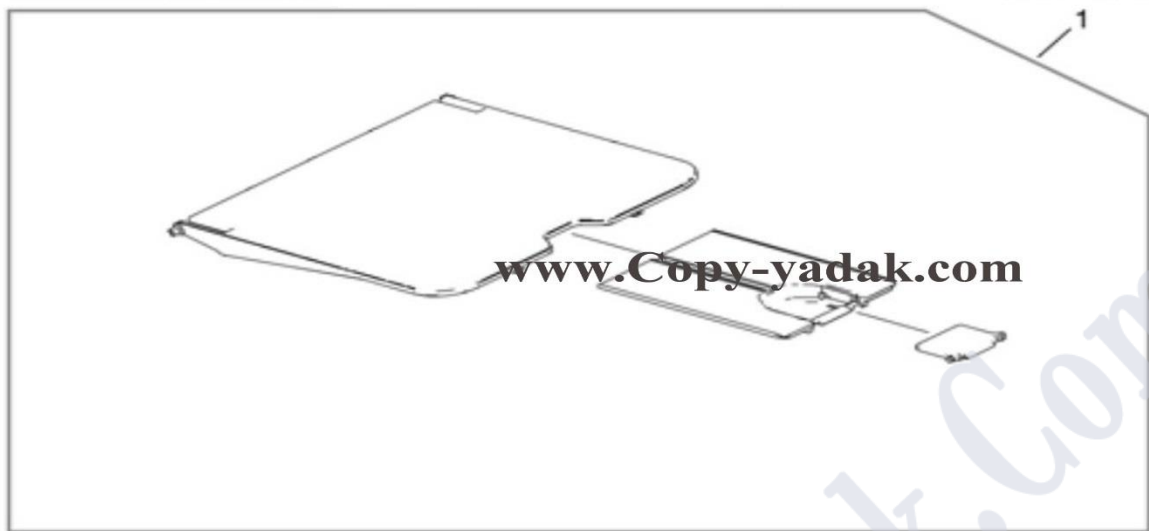
3. Whole unit replacement part



Parts Number Description		
1	CB37667001	HP LaserJet M1005 MFP, replacement 110 V
1	CB37667002	HP LaserJet M1005 MFP, replacement 220 V
1	CB37669001	HP LaserJet M1005 MFP, refurbished 110 V
1	CB37669002	HP LaserJet M1005 MFP, refurbished 220 V
1	CB37667056	HP LaserJet M1005 MFP (complete unit), replacement 110 V
1	CB37667055	HP LaserJet M1005 MFP (complete unit), replacement 220 V
1	CB37669056	HP LaserJet M1005 MFP (complete unit), refurbished 110 V
1	CB37669055	HP LaserJet M1005 MFP (complete unit), refurbished 220 V
1	Q261267901	Print cartridge



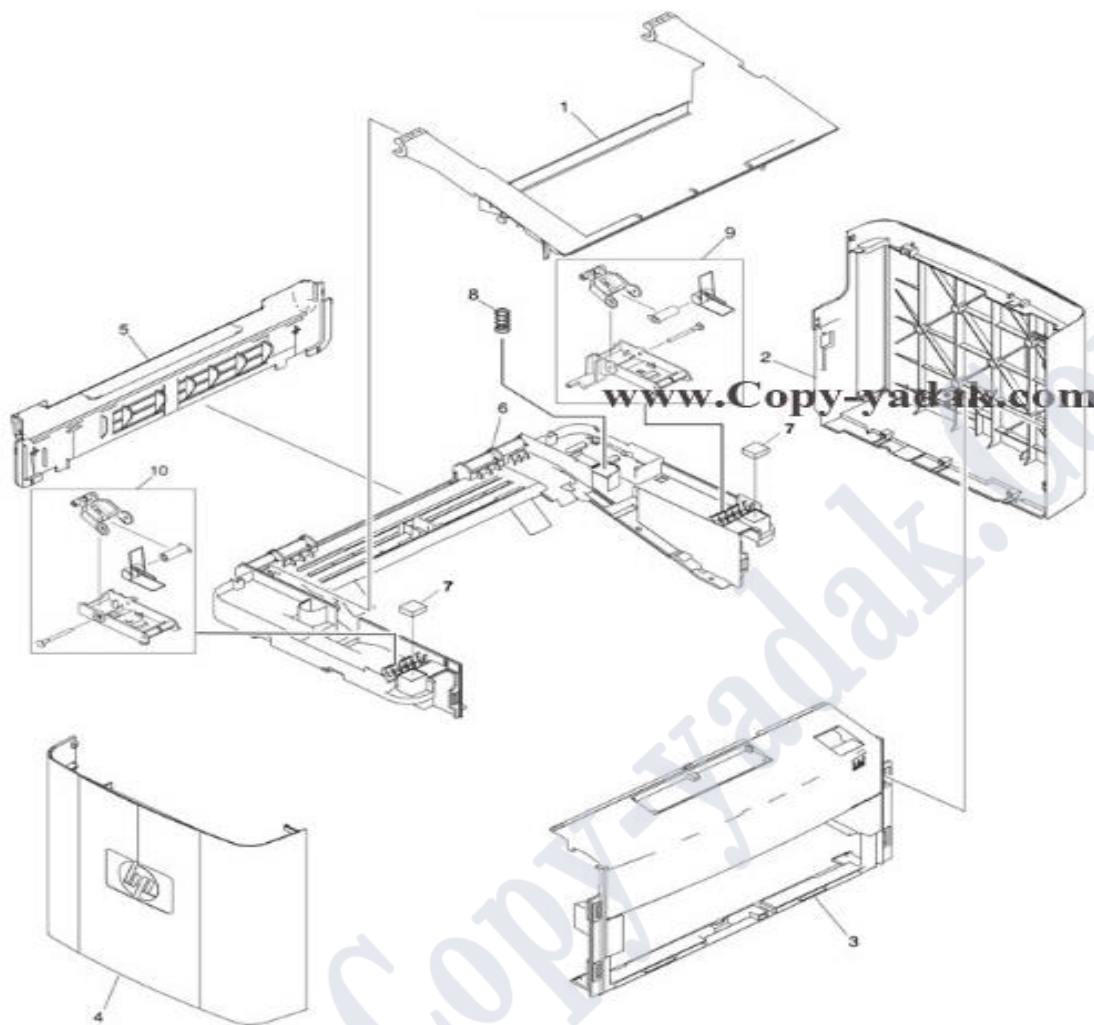
4.Pickup- and delivery-tray assemblies



Parts Number Description		
1	RM10859000CN	Delivery-tray assembly (device output bin)
2	RM14305000CN	Pickup-tray assembly

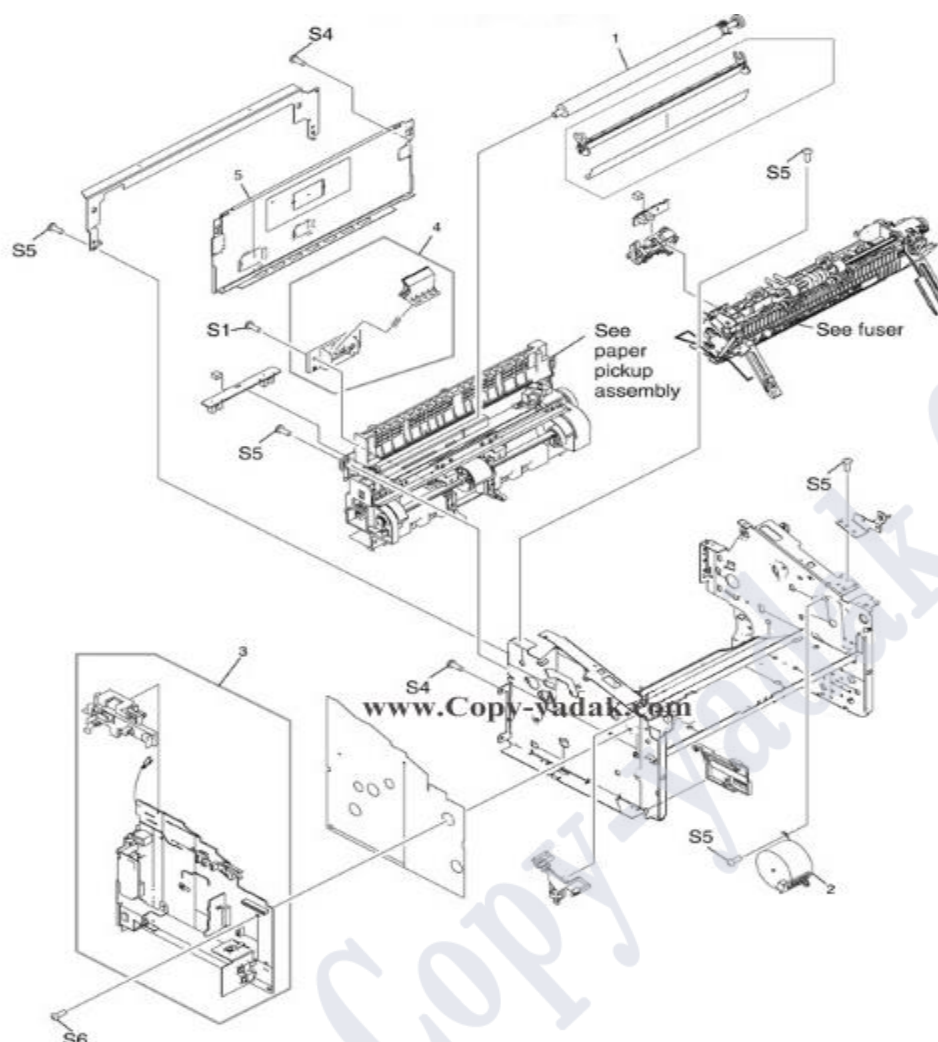


5. External covers



Parts Number Description		
1	RC21027000CN	Door, print cartridge
10	RM1-3953-000CN	Scanner-link assembly, left
2	RC21026000CN	Cover, right
3	RL1-1430-000CN	Cover, front
4	RC2-1025-000CN	Cover, left
5	RC1-2474-020CN	Cover, rear
6	RL1-1431-000CN	Cover, top (scanner support frame), printer
7	RC1-2476-000CN	Scanner cushion
8	RU5-2885-000CN	Scanner spring, tension
9	RM1-3954-000CN	Scanner-link assembly, right

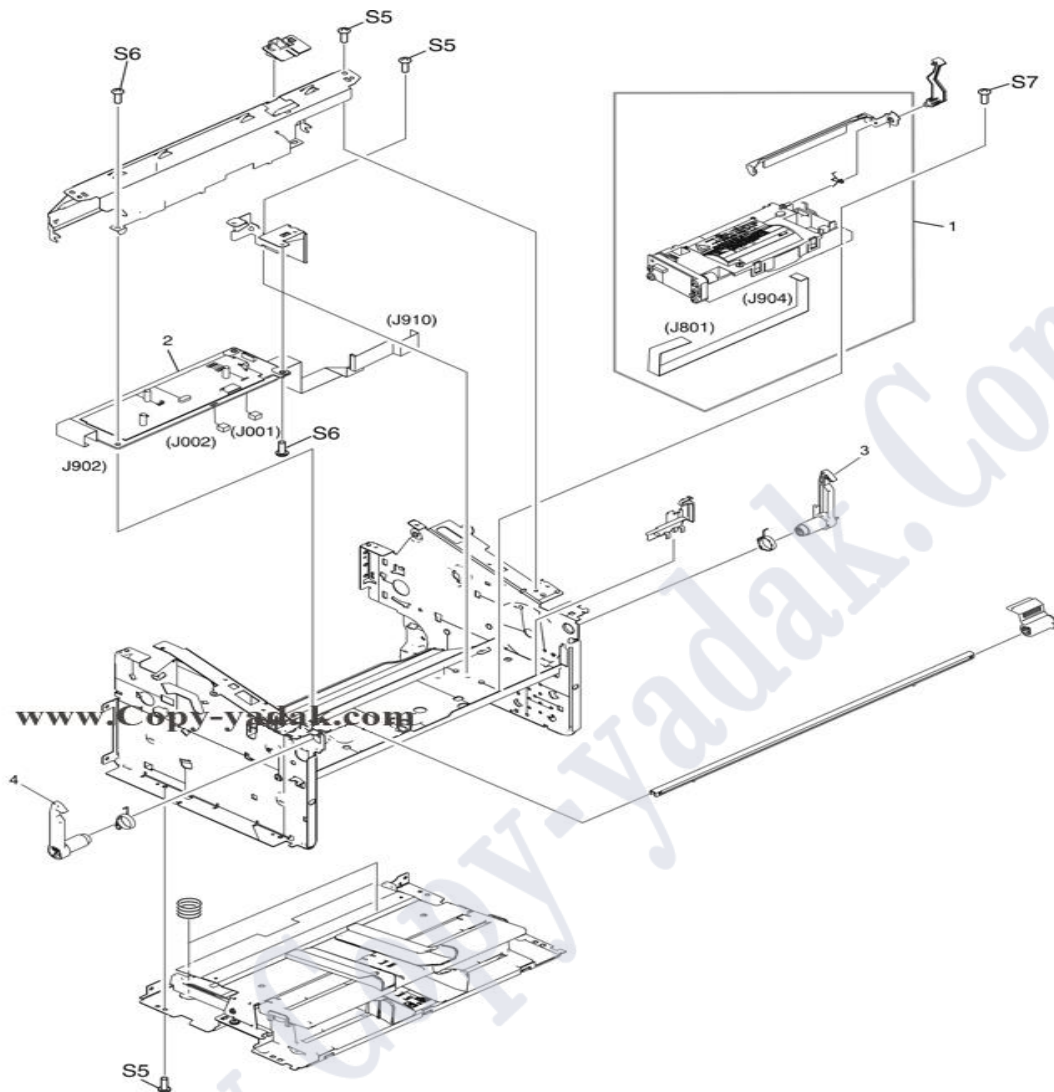
6. Internal components



Parts Number		Description
1	RM12083000CN	Transfer-roller assembly
2	RK20799000CN	Motor, stepping
3	RM13941000CN	Power-supply assembly, 110127 V
3	RM13942000CN	Power-supply assembly, 220240 V
4	RL10648000CN	Separation-pad assembly, printer
5	RC11985000CN	Panel, rear
S1	XB45401009CN	Screw, tap M4X10
S4	XB27300605CN	Screw, with washer M3X6
S5	XA91495000CN	Screw, rs M3X6
S6	XA91420000CN	Screw, rs M3X8



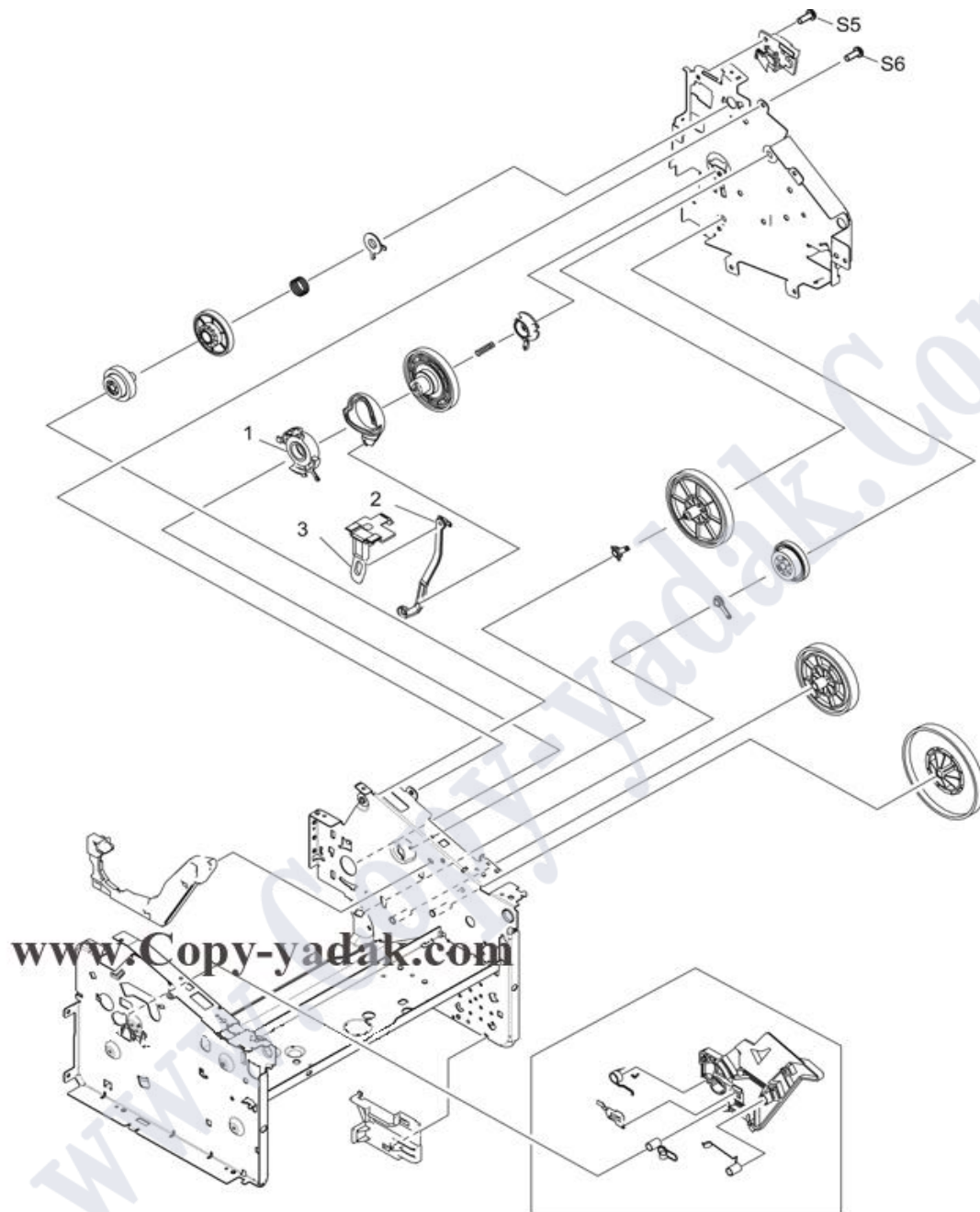
7.internal components



Parts Number		Description
1	RM12084000CN	Laser-scanner assembly
2	RM1-3943000CN	Engine-controller-PCB assembly (ECU)
3	RC1-2499-000CN	Latch, right
4	RC1-2498-000CN	Latch, left
S5	XA91495000CN	Screw, rs M3X6
S6	XA91420000CN	Screw, rs M3X8
S7	XA91501000CN	Screw, rs M2X10



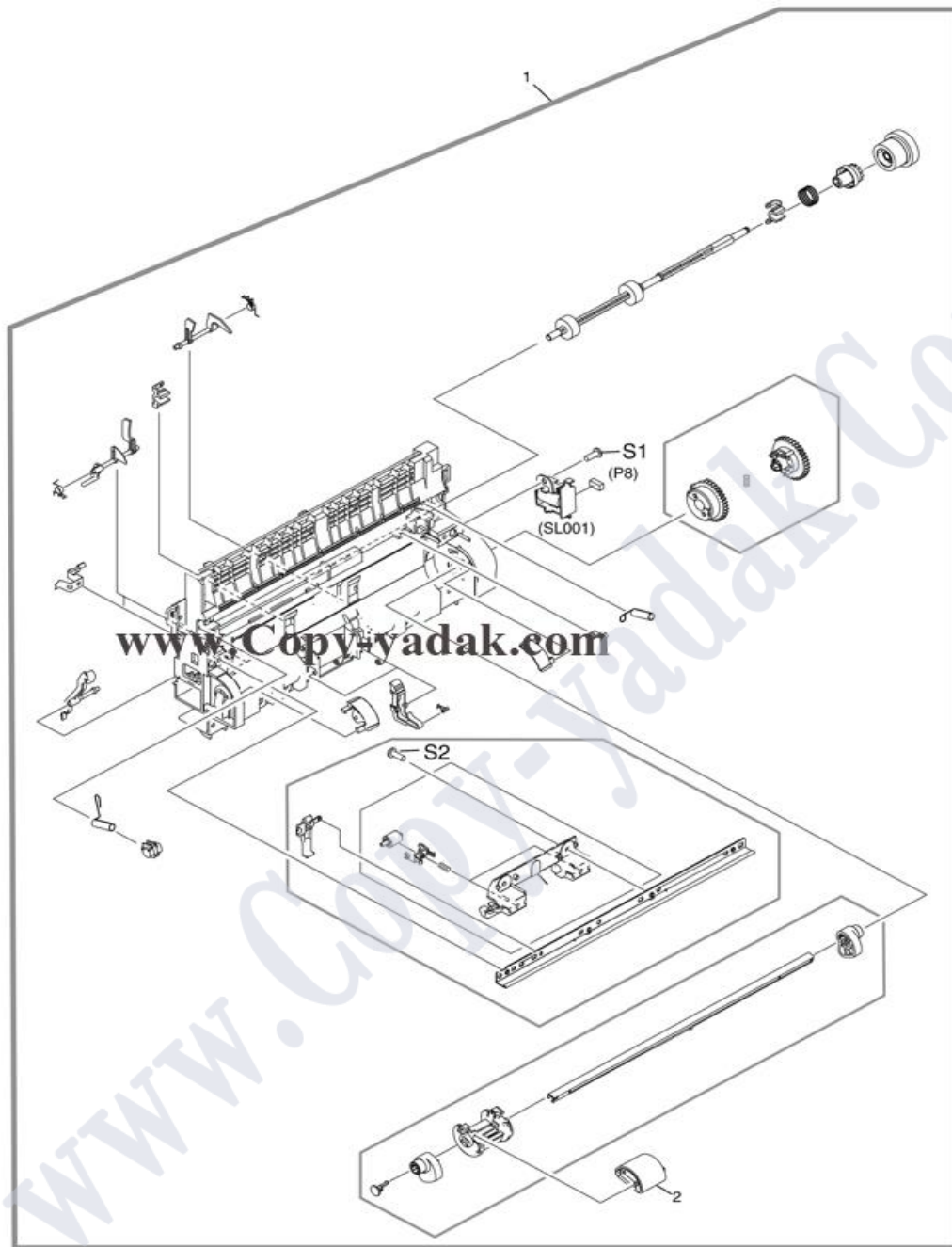
8.internal component



Parts Number		Description
1	RC11953000CN	Bushing
2	RC1-2485000CN	Link, coupling lower
3	RC12494000CN	Link, coupling top
4	XA91495000CN	Screw, rs M3X6
S5	XA91420000CN	Screw, rs M3X8



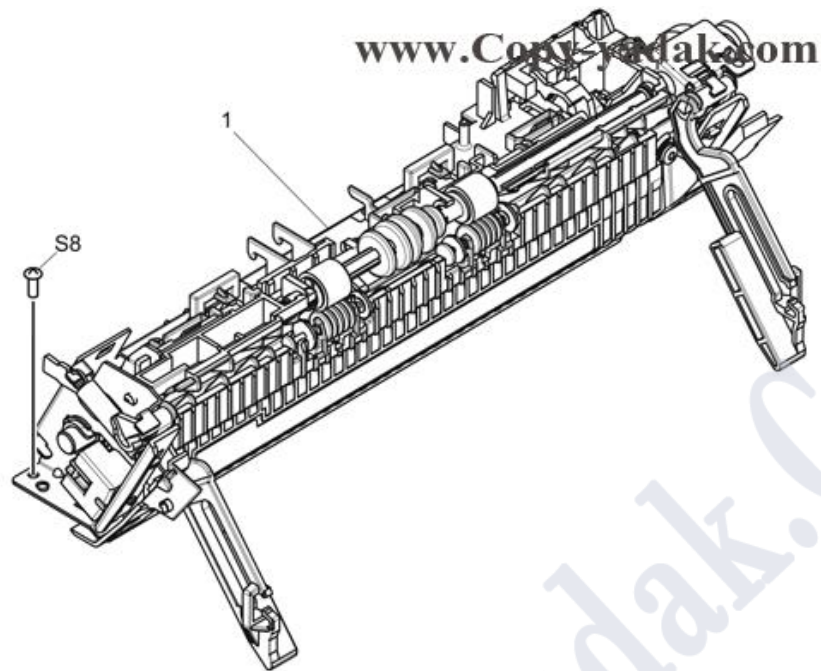
9. Paper-pickup assembly



Parts Number		Description
1	RM12091000CN	Paper-pickup assembly
2	RL1-0266000CN	Roller, pickup
S1	XB45401009CN	Screw, tap M4X10
S2	XA91503000CN	Screw, tap BH3X8



10.fuser assembly



Parts Number		Description
1	RM1-3952-000CN	Fuser (fixing assy) assembly 110-127 V
2	RM1-3955-000CN	Fuser (fixing assy) assembly 220-240 V
S8	XB2-8300-609CN	Screw, with washer M3X6