

Parts Catalog - ML-331x/ML-371x Series



1. Speed

- ML-331x series : 31 ppm in A4 / 33 ppm in Letter
- ML-371x series : 35 ppm in A4 / 37 ppm in Letter

2. Processor

- ML-331x series : 375 MHz
- ML-371x series : 600 MHz

3. Printer Languages

- ML-331x series : SPL, PCL5e
- ML-371x series : PCL6/5e, PostScript3, IBM ProPrinter, EPSON

4. Memory (Std / Max)

- ML-331x series : 64 MB / 64 MB
- ML-371xD : 64 MB / 320 MB
- ML-371xND/371xDW : 128 MB / 384 MB

5. Interfaces

- High Speed USB 2.0
- 10/100 BaseTX network connector (ML-331xND)

- 10/100/1000 BaseTX network connector (ML-371xND/371xDW)
- 802.11b/g/n wireless LAN (ML-371xDW)
- IEEE 1284 Parallel (Optional)

6. Toner cartridge (Initial / Sales)

- ML-331x series : 2K / 2K, 5K
- ML-371x series : 5K / 2K, 5K, 10K

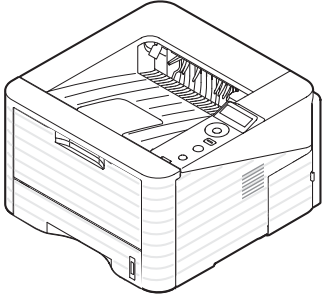
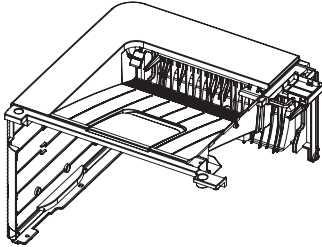
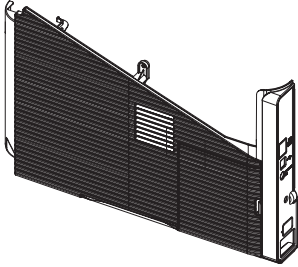
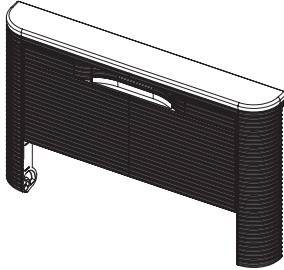
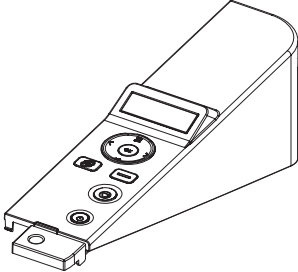
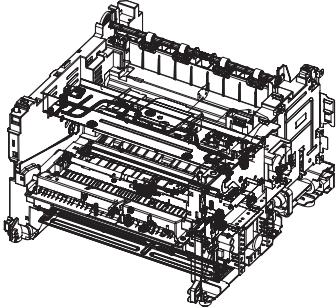
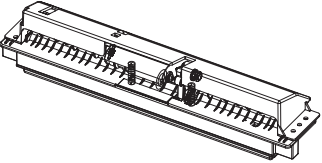
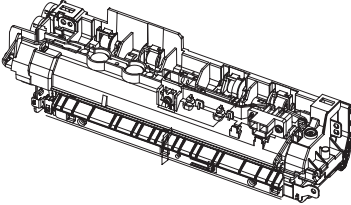
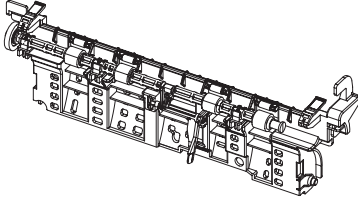
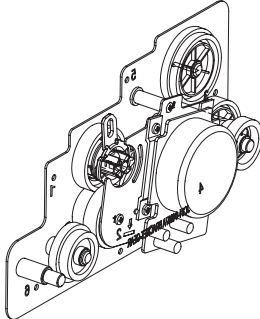
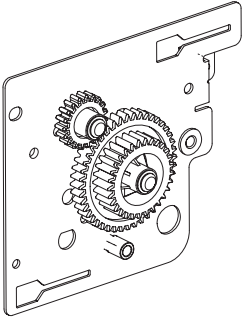
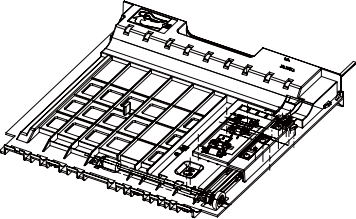
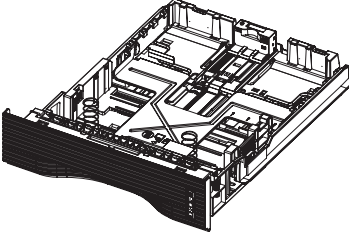
**This Parts Catalog is a property of Samsung Electronics Co.,Ltd.
Any unauthorized use of this manual can be punished under
applicable International and/or domestic law.**

ExplodedView and Parts List

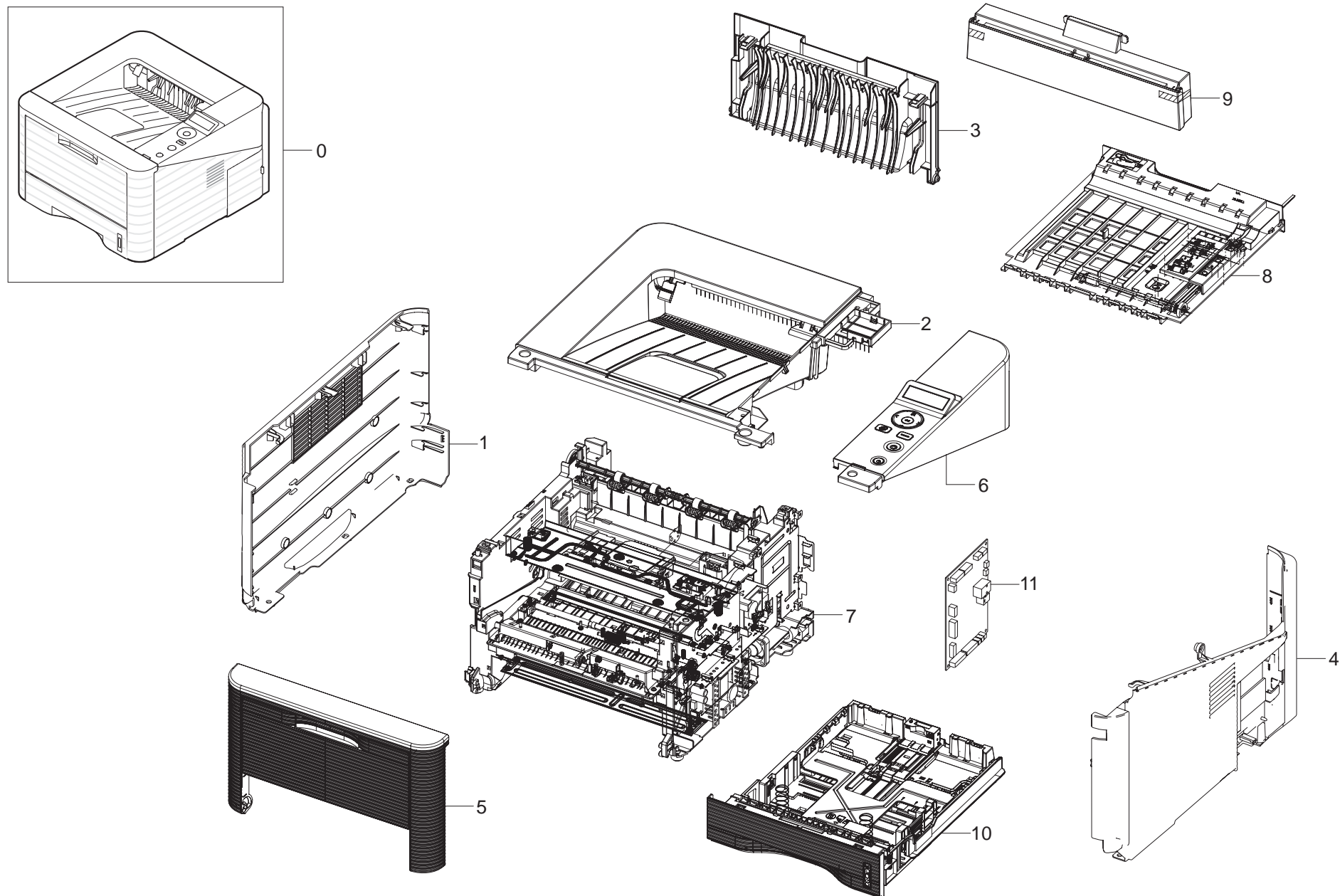
Contents

Thumbnail	4
0. Main	5
1. COVER	7
2. COVER-RIGHT	9
3. COVER-FRONT	11
4. OPE	13
5. FRAME	15
5-1. MP (1P)	20
5-1. MP (50P)	22
5-2. FUSER	24
5-3. FRAME-REAR	26
5-4. DRIVE	28
5-5. DRIVE FEED	30
5-6. Duplex	32
6. CASSETTE	34
7. OPTION CASSETTE (SCF)	36

Thumbnail

				
0. Main	1. COVER	2. COVER-RIGHT	3. COVER-FRONT	4. OPE
				
5. FRAME	5-1. MP	5-2. FUSER	5-3. FRAME-REAR	5-4. DRIVE
				
5-5. DRIVE FEED	6. Duplex	7. CASSETTE		

0. Main



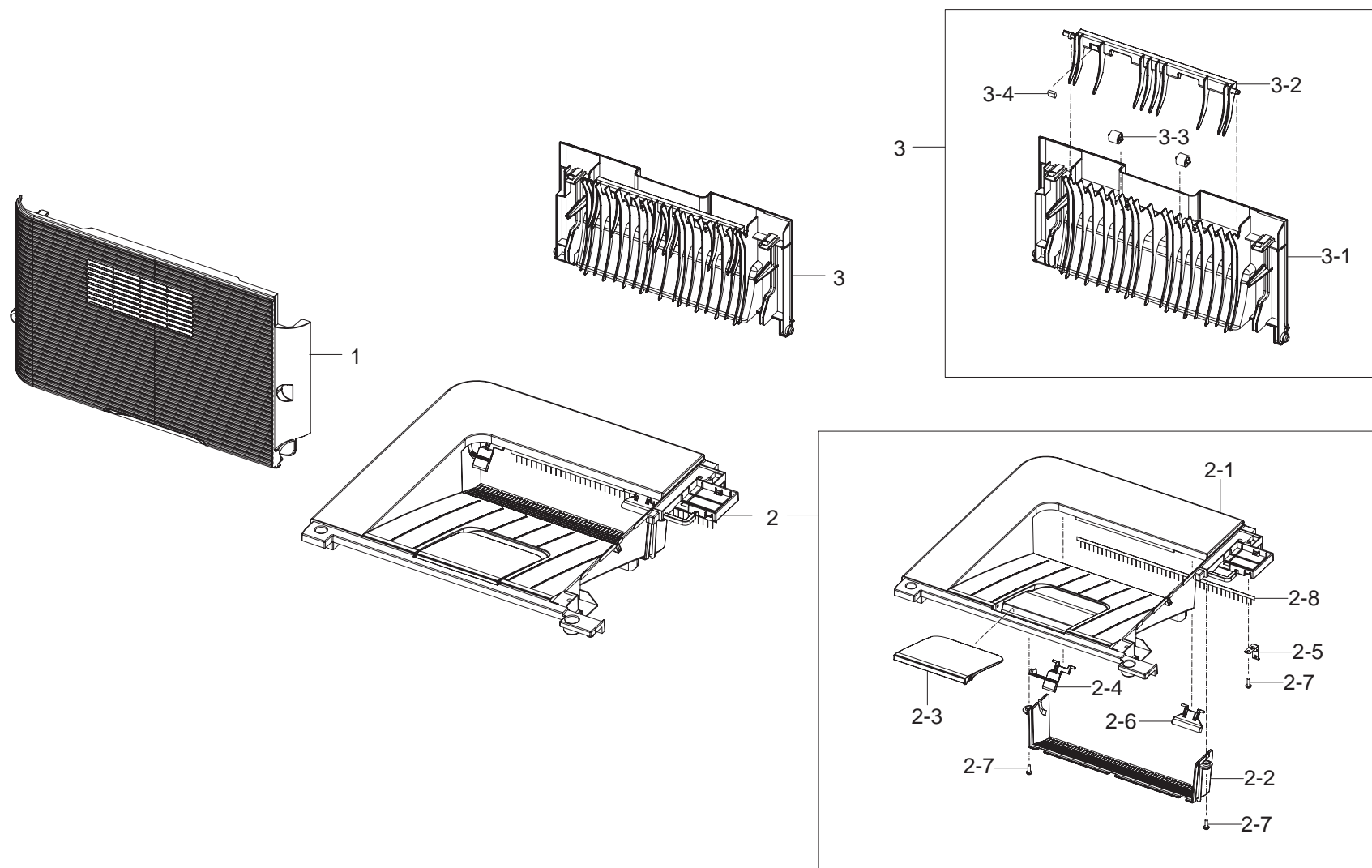
Main Parts List

Drawer#	Part Code	Description	Qty	Service	Remark
0	ML-331xD	30 ppm (A4), Duplex			
0	ML-331xND	30 ppm (A4), Duplex, Network			
0	ML-371xD	35 ppm (A4), Duplex			
0	ML-371xND	35 ppm (A4), Duplex, Network			
0	ML-371xDW	35 ppm (A4), Duplex, Network, Wireless Network			
1	JC63-02886A	COVER-LEFT	1	SA	Refer to 1.COVER
2	JC95-01302A	COVER-TOP	1	SA	Refer to 1.COVER
3	JC95-01303A	COVER-REAR	1	SA	Refer to 1.COVER
4	JC95-01304A~H	COVER-RIGHT	1	SA	Refer to 2.COVER-RIGHT
5	JC95-01306A~D	COVER-FRONT	1	SA	Refer to 3.COVER-FRONT
6	JC97-03872A	OPE	1	SA	Refer to 4.OPE
7	JC93-00322A~C	FRAME MAIN	1	SNA	Refer to 5.FRAME MAIN
8	JC90-01031A	DUPLEX	1	SA	Refer to 6.DUPLEX
9	JC95-01300A	COVER-REAR DUPLEX	1	SNA	
10	JC90-01036A	CASSETTE	1	SA	Refer to 7.CASSETTE
11	JC92-02329A	PBA-MAIN	1	SA	3310D/SEE

SA : SERVICE AVAILABLE, SNA : SERVICE not AVAILABLE

Drawer#	Part Code	Description	Qty	Service	Remark
11	JC92-02329B	PBA-MAIN	1	SA	3310D/XIP
11	JC92-02329D	PBA-MAIN	1	SA	3310D/XEV/STS
11	JC92-02361A	PBA-MAIN	1	SA	3310ND/SEE
11	JC92-02361B	PBA-MAIN	1	SA	3310ND/XAA
11	JC92-02361C	PBA-MAIN	1	SA	3310ND/XIP
11	JC92-02361E	PBA-MAIN	1	SA	3310ND/others
11	JC92-02362A	PBA-MAIN	1	SA	3710D/SEE
11	JC92-02362B	PBA-MAIN	1	SA	3710D/XAA
11	JC92-02362C	PBA-MAIN	1	SA	3710D/XIP
11	JC92-02362E	PBA-MAIN	1	SA	3710D/XEV/STS
11	JC92-02343A	PBA-MAIN	1	SA	3710ND/SEE
11	JC92-02343B	PBA-MAIN	1	SA	3710ND/XAA
11	JC92-02343C	PBA-MAIN	1	SA	3710ND/XIP
11	JC92-02343E	PBA-MAIN	1	SA	3710ND/others
11	JC92-02363A	PBA-MAIN	1	SA	3710DW/SEE
11	JC92-02363B	PBA-MAIN	1	SA	3710DW/XAA
11	JC92-02363C	PBA-MAIN	1	SA	3710DW/XIP
12	JC92-02364A	PBA-WNPC	1	SA	Only 3710DW
13	JC39-01485A	HARNESS-WLAN	1	SA	Only 3710DW

1. COVER



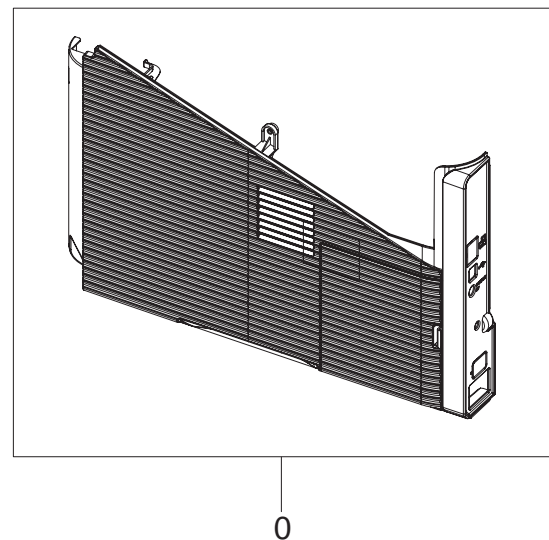
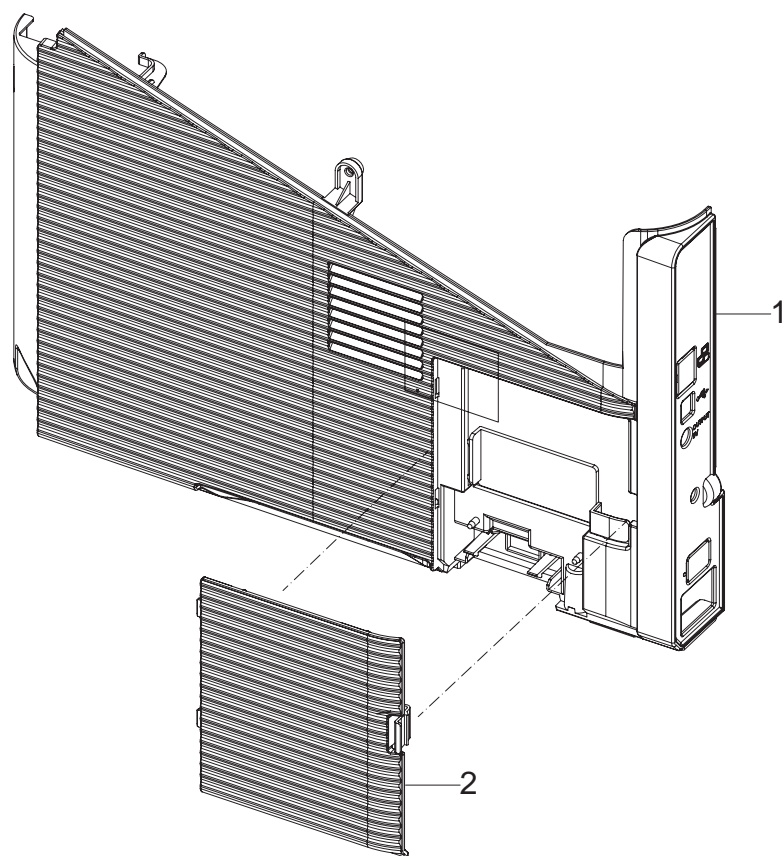
COVER Parts List

SA : SERVICE AVAILABLE, SNA : SERVICE not AVAILABLE

Drawer#	Part Code	Description	Qty	Service	Remark
0	JC95-01301A	COVER	1	SNA	
1	JC63-02886A	COVER-LEFT	1	SA	
2	JC95-01302A	COVER-TOP	1	SA	
2-1	JC63-02889A	COVER-TOP	1	SA	
2-2	JC63-02890A	COVER-EXIT	1	SA	
2-3	JC61-04097A	STACKER-RX	1	SA	
2-4	JC61-04098A	STACKER-BIN_FULL	1	SA	
2-5	JC63-02903A	GROUND-EXIT	1	SNA	

Drawer#	Part Code	Description	Qty	Service	Remark
2-6	JC72-01343A	PMO-SUB_M_STACKER	1	SC	
2-7	6003-000196	SCREW-TAPTYPE	3	SNA	
2-8	JC67-00055A	BRUSH-ANTISTATIC 531P	1	SA	
3	JC95-01303A	COVER-REAR	1	SA	
3-1	JC63-02888A	COVER-REAR	1	SA	
3-2	JC61-01099A	GUIDE-CHANGE_DUP	1	SA	
3-3	JC66-02830A	ROLLER-IDLE	2	SA	
3-4	JC72-01444A	SPONGE-GUIDE CHANGE DUP	1	SNA	

2. COVER-RIGHT



COVER-RIGHT Parts List

SA : SERVICE AVAILABLE, SNA : SERVICE not AVAILABLE

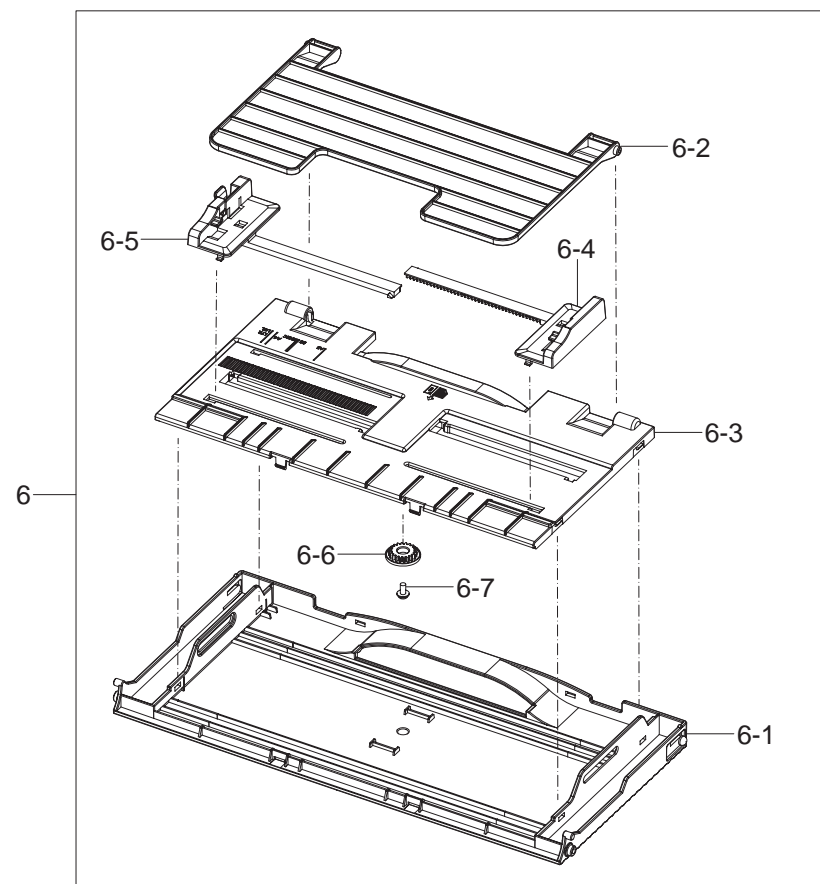
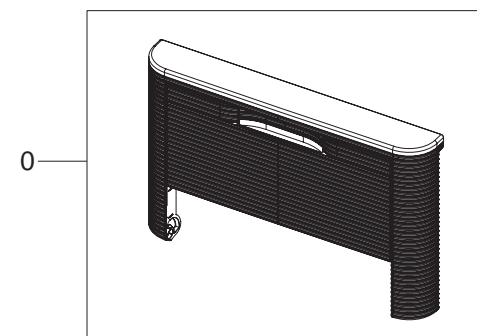
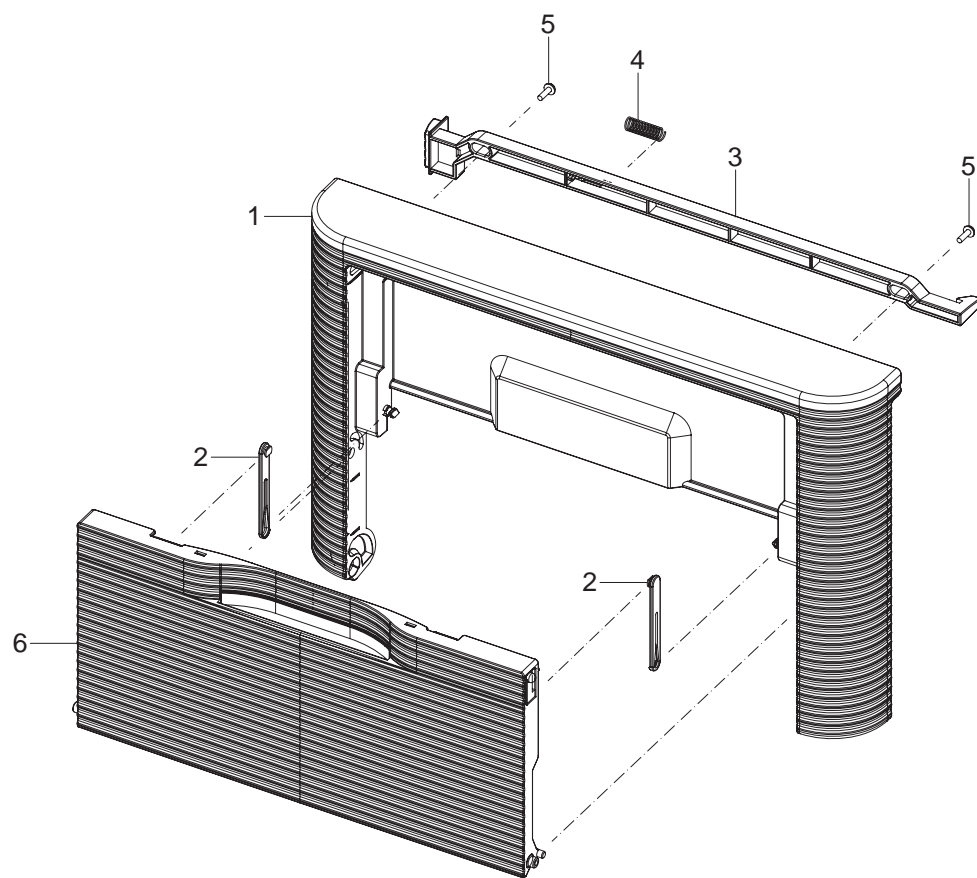
Drawer#	Part Code	Description	Qty	Service	Remark
0	JC95-01304A~H	COVER-RIGHT	1	SA	See the reference below.
1	JC63-02895A~H	COVER-RIGHT	1	SA	See the reference below.

Drawer#	Part Code	Description	Qty	Service	Remark
2	JC63-02898A	COVER-SCF	1	SA	

※ Reference

JC95-01304A	JC63-02895A	Network Tab : O Swich Tab : O Board Tab : O
JC95-01304B	JC63-02895B	Network Tab : O Swich Tab : X Board Tab : O
JC95-01304C	JC63-02895C	Network Tab : X Swich Tab : O Board Tab : O
JC95-01304D	JC63-02895D	Network Tab : X Swich Tab : X Board Tab : O
JC95-01304E	JC63-02895E	Network Tab : O Swich Tab : O Board Tab : X
JC95-01304F	JC63-02895F	Network Tab : O Swich Tab : X Board Tab : X
JC95-01304G	JC63-02895G	Network Tab : X Swich Tab : O Board Tab : X
JC95-01304H	JC63-02895H	Network Tab : X Swich Tab : X Board Tab : X

3. COVER-FRONT



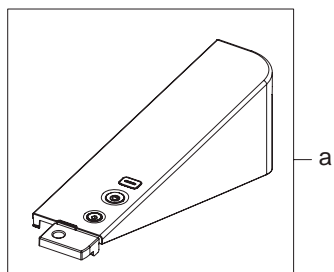
COVER-FRONT Parts List

SA : SERVICE AVAILABLE, SNA : SERVICE not AVAILABLE

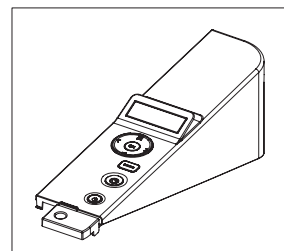
Drawer#	Part Code	Description	Qty	Service	Remark
0	JC95-01306A	COVER-FRONT	1	SA	ML-3710ND
0	JC95-01306B	COVER-FRONT	1	SA	ML-3710D
0	JC95-01306C	COVER-FRONT	1	SA	ML-3710DW
0	JC95-01306D	COVER-FRONT	1	SA	ML-3310ND
1	JC63-02897A	COVER-FRONT	1	SNA	ML-3710ND
1	JC63-02897D	COVER-FRONT	1	SNA	ML-3710D
1	JC63-02897E	COVER-FRONT	1	SNA	ML-3710DW
1	JC63-02897C	COVER-FRONT	1	SNA	ML-3310ND
2	JC66-02086B	LINK-COVER_MP	2	SA	
3	JC64-00602A	LOCKER-FRONT	1	SA	

Drawer#	Part Code	Description	Qty	Service	Remark
4	6107-001195	SPRING-CS	1	SNA	
5	6003-000264	SCREW-TAPTYPE	2	SNA	
6	JC90-01037A	MP GUIDE-TRAY	1	SNA	
6-1	JC63-02900A	TRAY-UPPER	1	SA	
6-2	JC63-02901A	TRAY-EXTENSION_MP	1	SA	
6-3	JC63-02902A	TRAY-MP_LOWER	1	SA	
6-4	JC70-00561B	ADJUST-MP_LEFT	1	SA	
6-5	JC70-00562B	ADJUST-MP_RIGHT	1	SA	
6-6	JC66-00387A	GEAR-RACK_PINION	1	SA	
6-7	6003-000264	SCREW-TAPTYPE	1	SNA	

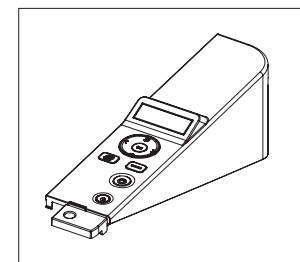
4. OPE



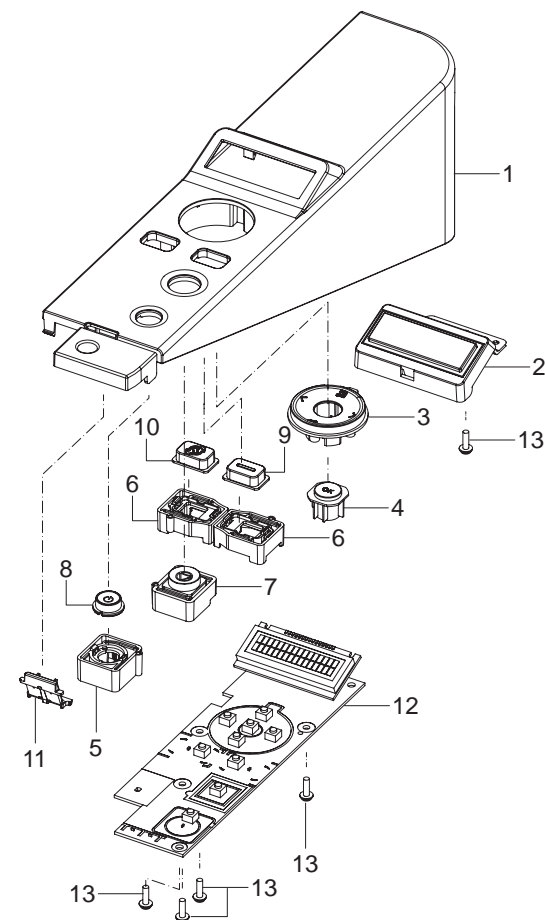
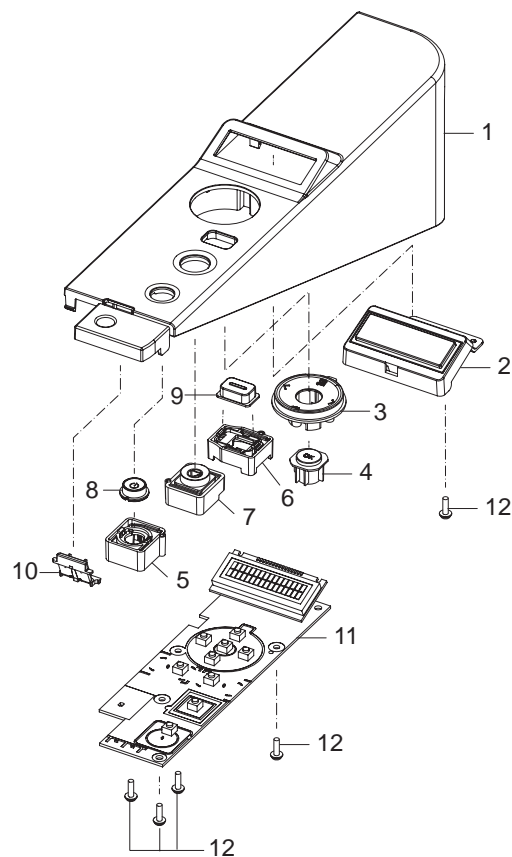
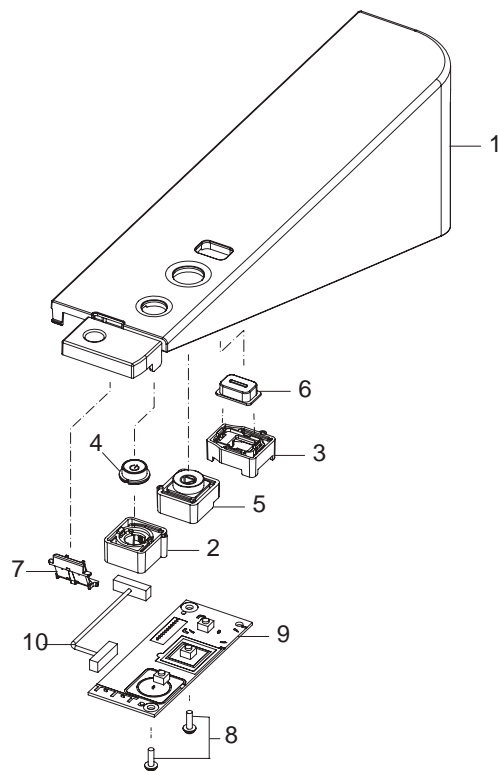
a



b



c



OPE Parts List

SA : SERVICE AVAILABLE, SNA : SERVICE not AVAILABLE

A type

Drawer#	Part Code	Description	Qty	Service	Remark
a	JC97-03870A	OPE	1	SA	ML-331xD ML-371xD
1	JC63-02891A	COVER-OPE	1	SA	
2	JC64-00606A	KEY-POWER HOLDER	1	SA	
3	JC64-00605A	KEY-BODY	1	SA	
4	JC64-00393E	KEY-STOP	1	SA	
5	JC64-00589C	KEY-POWER	1	SA	
6	JC64-00603A	KEY-ECO	1	SA	
7	JC67-00500A	LENS-STATUS	1	SA	
8	6003-000196	SCREW-TAPTYPE	2	SNA	
9	JC92-02342A	PBA-OPE	1	SA	
10	JC39-01477A	HARNESS-OPE(LED)	1	SA	

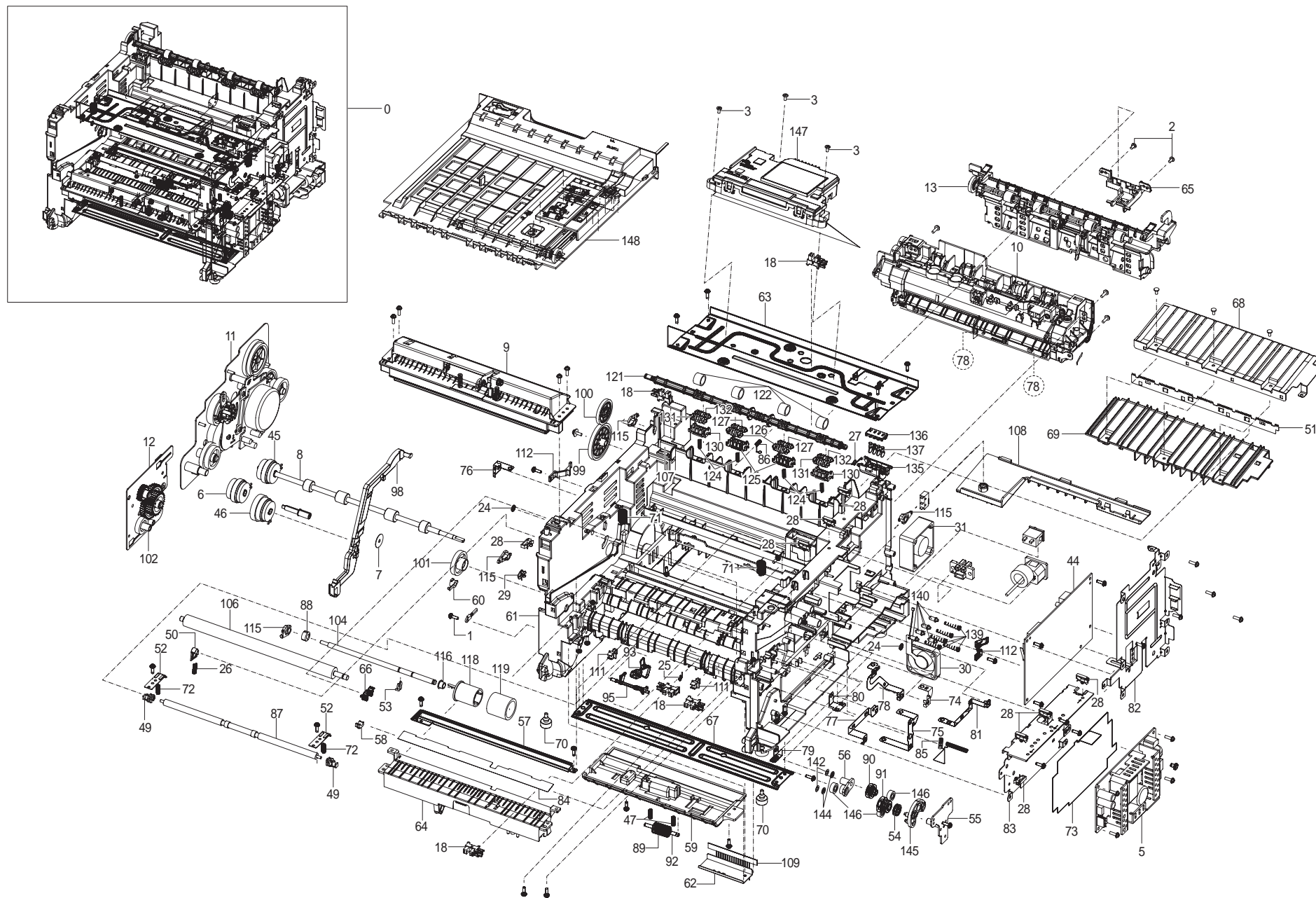
B type

Drawer#	Part Code	Description	Qty	Service	Remark
b	JC97-03871A	OPE	1	SA	ML-331xND ML-371xND
1	JC63-02892A	COVER-OPE	1	SA	
2	JC67-00501A	CAP-WINDOW_LCD	1	SA	
3	JC64-00565B	KEY-MENU	1	SA	
4	JC64-00566C	KEY-OK	1	SA	
5	JC64-00606A	KEY-POWER HOLDER	1	SA	
6	JC64-00605A	KEY-BODY	1	SA	
7	JC64-00393E	KEY-STOP	1	SA	
8	JC64-00589C	KEY-POWER	1	SA	
9	JC64-00603A	KEY-ECO	1	SA	
10	JC67-00500B	LENS-STATUS	1	SA	
11	JC92-02341A	PBA-OPE	1	SA	
12	6003-000196	SCREW-TAPTYPE	5	SNA	

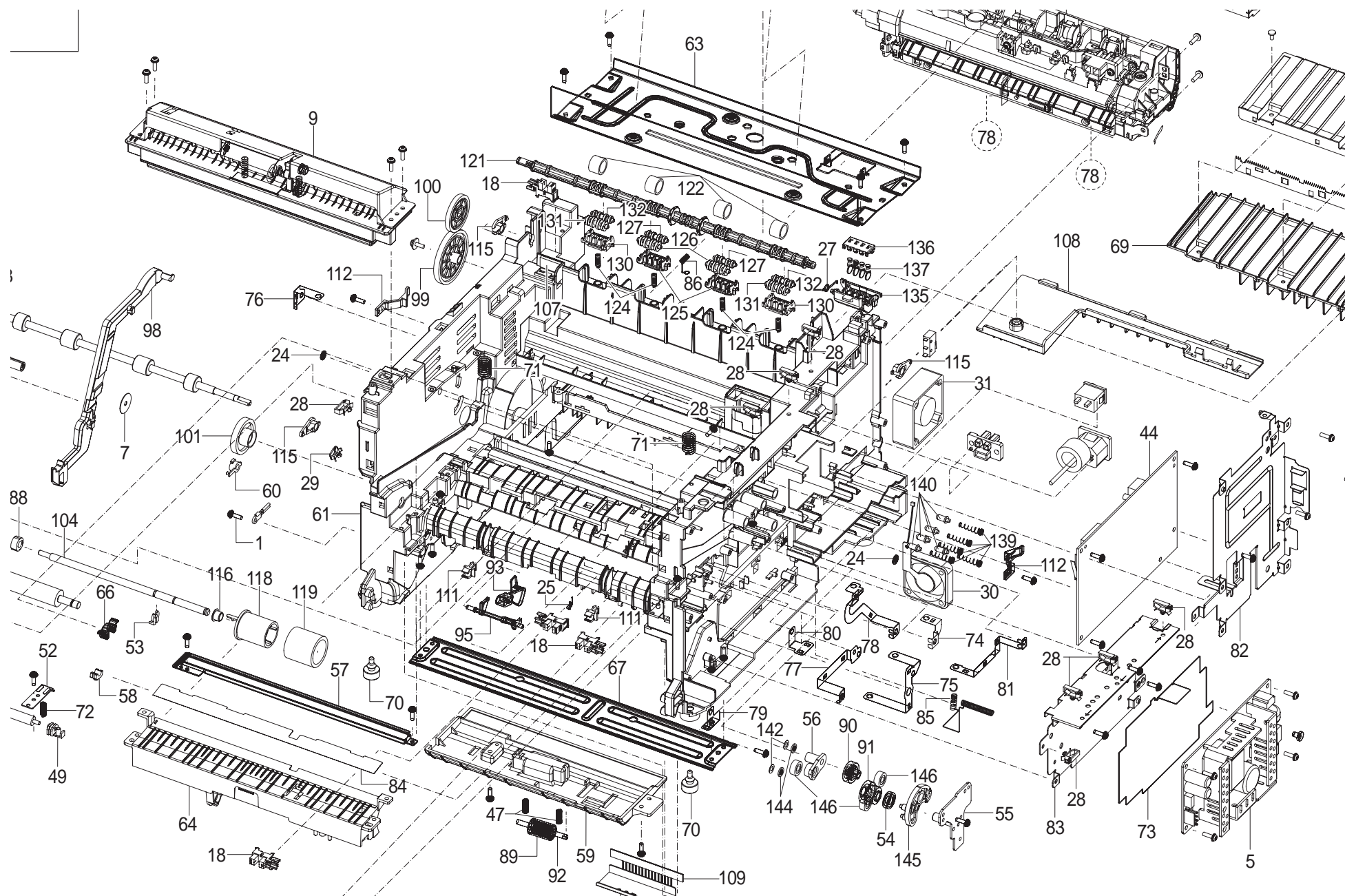
C type

Drawer#	Part Code	Description	Qty	Service	Remark
c	JC97-03872A	OPE	1	SA	ML-371xDW
1	JC63-02893A	COVER-OPE	1	SA	
2	JC67-00501A	CAP-WINDOW_LCD	1	SA	
3	JC64-00565B	KEY-MENU	1	SA	
4	JC64-00566C	KEY-OK	1	SA	
5	JC64-00606A	KEY-POWER HOLDER	1	SA	
6	JC64-00605A	KEY-BODY	2	SA	
7	JC64-00393E	KEY-STOP	1	SA	
8	JC64-00589C	KEY-POWER	1	SA	
9	JC64-00603A	KEY-ECO	1	SA	
10	JC64-00604A	KEY-WPS	1	SA	
11	JC67-00500B	LENS-STATUS	1	SA	
12	JC92-02341B	PBA-OPE	1	SA	
13	6003-000196	SCREW-TAPTYPE	5	SNA	

5. FRAME



FRAME(enlarge)



FRAME Parts List

SA : SERVICE AVAILABLE, SNA : SERVICE not AVAILABLE

Drawer#	Part Code	Description	Qty	Service	Remark
0	JC93-00322A	FRAME MAIN	1	SNA	MP 50p, 110V
0	JC93-00322B	FRAME MAIN	1	SNA	MP 50p, 220V
0	JC93-00322C	FRAME MAIN	1	SNA	MP 1p, 220V
1	6003-000196	SCREW-TAPTYPE	20	SNA	
2	6003-000261	SCREW-TAPTYPE	2	SNA	
3	6003-000269	SCREW-TAPTYPE	3	SNA	
4	JC39-01470A	HARNESS-MP SENSOR & CLUTCH	1	SA	Only MP 50p
5	JC44-00095D	SMPS-V1	1	SNA	110V
5	JC44-00096D	SMPS-V2	1	SNA	220V
6	JC47-00033A	CLUTCH-ELECTRIC	1	SNA	Only MP 50p
7	JC60-00037A	SPACER-CLUTCH	1	SNA	Only MP 50p
8	JC66-02772A	SHAFT-FEED REGI	1	SA	Only MP 50p
9	JC90-01043A	MP	1	SA	MP 50p
9	JC90-01044A	MP	1	SA	MP 1p
10	JC91-01023A	FUSER	1	SA	110V
10	JC91-01024A	FUSER	1	SA	220V
11	JC93-00326A	DRIVE	1	SA	
12	JC93-00329A	DRIVE-FEED	1	SA	MP 50p
12	JC93-00329B	DRIVE-FEED	1	SA	MP 1p
13	JC93-00334A	FRAME-REAR	1	SNA	
14	JC93-00337A	FRAME-ETC	1	SA	
15	0205-001067	GREASE-GRAPHITE	0.045	SNA	
16	0205-001080	GREASE-BEARING	0.22	SNA	
17	0205-001281	GREASE-BEARING	0.035	SNA	
18	0604-001393	PHOTO-INTERRUPTER	5	SA	
19	1404-001417	THERMISTOR-NTC ASSY	1	SA	
20	6003-000196	SCREW-TAPTYPE	38	SNA	
21	6003-000261	SCREW-TAPTYPE	3	SNA	
22	6003-000301	SCREW-TAPTYPE	1	SA	
23	6006-001078	SCREW-TAPTYPE	1	SA	
24	6044-000001	RING-CS	2	SNA	

Drawer#	Part Code	Description	Qty	Service	Remark
25	6107-001164	SPRING-TS	2	SA	
26	6107-001370	SPRING-CS	1	SA	
27	6107-002781	SPRING-TS	1	SA	
28	6502-001130	CABLE CLAMP	8	SA	
29	6502-001131	CABLE CLAMP	2	SA	
30	JC31-00108A	FAN	1	SA	
31	JC31-00146A	FAN	1	SA	
32	JC39-01465A	HARNESS-SENSOR	1	SA	
33	JC39-01466A	HARNESS-MOTOR CLUTCH	1	SA	
34	JC39-01467A	HARNESS-AIR TEMP	1	SA	
35	JC39-01468A	HARNESS-EXIT	1	SA	
36	JC39-01469A	HARNESS-REARCOVER&BINFULL SENSOR	1	SA	
37	JC39-01471A	HARNESS-HVPS	1	SA	
38	JC39-01472A	HARNESS-SMPS(SIGNAL)	1	SA	
39	JC39-01478A	FLAT CABLE	1	SNA	
40	JC39-01479A	HARNESS-FUSER THERM	1	SA	
41	JC39-01481A	HARNESS-SMPS POWER	1	SA	
42	JC39-01483A	HARNESS-AC INLET-2	1	SA	
43	JC39-01486A	HARNESS-FUSER BIAS	1	SA	
44	JC44-00197A	HVPS	1	SA	
45	JC47-00033A	CLUTCH-ELECTRIC	1	SNA	
46	JC47-00034A	CLUTCH-ELECTRIC	1	SA	
47	JC61-00049A	SPRING ETC-TR(KOR)	2	SNA	
48	JC61-00424A	BUSH-4	1	SA	
49	JC61-00585A	BUSH-M-FEED IDLE	2	SNA	
50	JC61-00588A	BUSH-M-TR L	1	SNA	
51	JC61-00604A	PLATE-P-SAW	1	SNA	
52	JC61-00914A	PLATE-P-PUSH BUSHING	2	SA	
53	JC61-01367A	FIXER-M_E RING 4PI	2	SA	
54	JC61-02220A	COLLAR-SWING	1	SA	

FRAME Parts List

SA : SERVICE AVAILABLE, SNA : SERVICE not AVAILABLE

Drawer#	Part Code	Description	Qty	Service	Remark
55	JC61-02225A	BRACKET-SWING	1	SNA	
56	JC61-02233A	HOLDER-REGI	1	SA	
57	JC61-02236A	PLATE-EARTH-TRANSFER	1	SNA	
58	JC61-02468A	BUSH-TR_L	1	SA	
59	JC61-02752A	FRAME-DUPLEX PATH_EX	1	SA	
60	JC61-03782A	BUSH-SHAFT_EXIT	1	SNA	
61	JC61-04056A	FRAME-BASE	1	SA	
62	JC61-04062A	BRACKET-PAPER GROUND	1	SA	
63	JC61-04063A	BRACKET-LSU	1	SA	
64	JC61-04064A	GUIDE-FRAME DUPLEX	1	SA	
65	JC61-04067A	HOLDER-EXIT SENSOR	1	SA	
66	JC61-04068A	HOLDER-TR	1	SA	
67	JC61-04069A	PLATE-FRAME BOTTOM	1	SA	
68	JC61-04090A	GUIDE-TR	1	SA	
69	JC61-04091A	GUIDE-TR RIB	1	SA	
70	JC61-40001A	FOOT-ML80	2	SA	
71	JC61-70932A	SPRING ETC-GUIDE DEVE	2	SA	
72	JC61-70958A	SPRING ETC-TR	2	SA	
73	JC62-00827A	INSULATION-SMPS	1	SNA	
74	JC63-01614A	GROUND-GUIDE_TR	1	SNA	
75	JC63-02874A	GROUND-BRKT PAPER	1	SA	
76	JC63-02875A	GROUND-BRKT GEAR	1	SA	
77	JC63-02876A	GROUND-HVPS	1	SA	
78	JC63-02877A	GROUND-BRACKET LSU	1	SA	
79	JC63-02878A	GROUND-PLATE BOTTOM_L	1	SA	
80	JC63-02880A	GROUND-SCF	1	SA	
81	JC63-02881A	GROUND-VARISTOR	1	SA	
82	JC63-02882A	SHIELD-CONTROLLER	1	SA	
83	JC63-02884A	SHIELD-SMPS_L	1	SA	
84	JC63-02956A	SHEET-DUPLEX PATH	1	SNA	
85	JC65-00047A	TERMINAL-TR	1	SA	

Drawer#	Part Code	Description	Qty	Service	Remark
86	JC65-00050A	TERMINAL-PR_FUSER	1	SA	
87	JC66-00527A	SHAFT-FEED IDLE	1	SA	
88	JC66-00977A	CLUTCH-P_ONE WAY	1	SA	
89	JC66-01022A	ROLLER-M_IDLE SCF	1	SA	
90	JC66-01639A	GEAR-DUPLEX DR 28	1	SA	
91	JC66-01651A	GEAR-RDCN 23/23	1	SA	
92	JC66-01846A	SHAFT-DUP_ROLLER	1	SA	
93	JC66-02762A	ACTUATOR-EMPTY	1	SA	
94	JC66-02763A	ACTUATOR-REGI	1	SA	
95	JC66-02764A	ACTUATOR-FEED	1	SA	
96	JC66-02768A	LEVER-OPC HOLDER_L	1	SA	
97	JC66-02769A	LEVER-OPC HOLDER_R	1	SA	
98	JC66-02770A	LEVER-COUPLING	1	SA	
99	JC66-02778A	GEAR-EXIT IDLE 96	1	SA	
100	JC66-02780A	GEAR-EXIT 65	1	SA	
101	JC66-02791A	GEAR-FEED IDLE 29	1	SA	
102	JC66-02794A	GEAR-FEED 20	1	SA	
103	JC66-02797A	ROLLER-FEED	1	SA	
104	JC66-02832A	SHAFT-PICK UP	1	SNA	
105	JC66-02834A	ROLLER-FEED REGI	1	SA	
106	JC66-02842A	ROLLER-TRANSFER	1	SNA	
107	JC66-02932A	DAMPER-BINFULL SENSOR	1	SNA	
108	JC67-00291A	CAP-HARNESS	1	SNA	
109	JC67-00468A	BRUSH-PICK	1	SNA	
110	JC68-00317A	LABEL(R)-HOT CAUTION,KME	1	SNA	
111	JC72-00382B	PMO-BUSHING FEED	2	SA	
112	JC72-00983A	PMO-LOCKER CST	2	SA	
113	JC72-00984A	PMO-PLATE GUIDE DEVE_L	1	SA	
114	JC72-00985A	PMO-PLATE GUIDE DEVE_R	1	SA	
115	JC72-41191B	PMO-BEARING SHAFT	4	SA	
116	JC72-41364A	PMO-BUSHING_P/U,MP	1	SA	

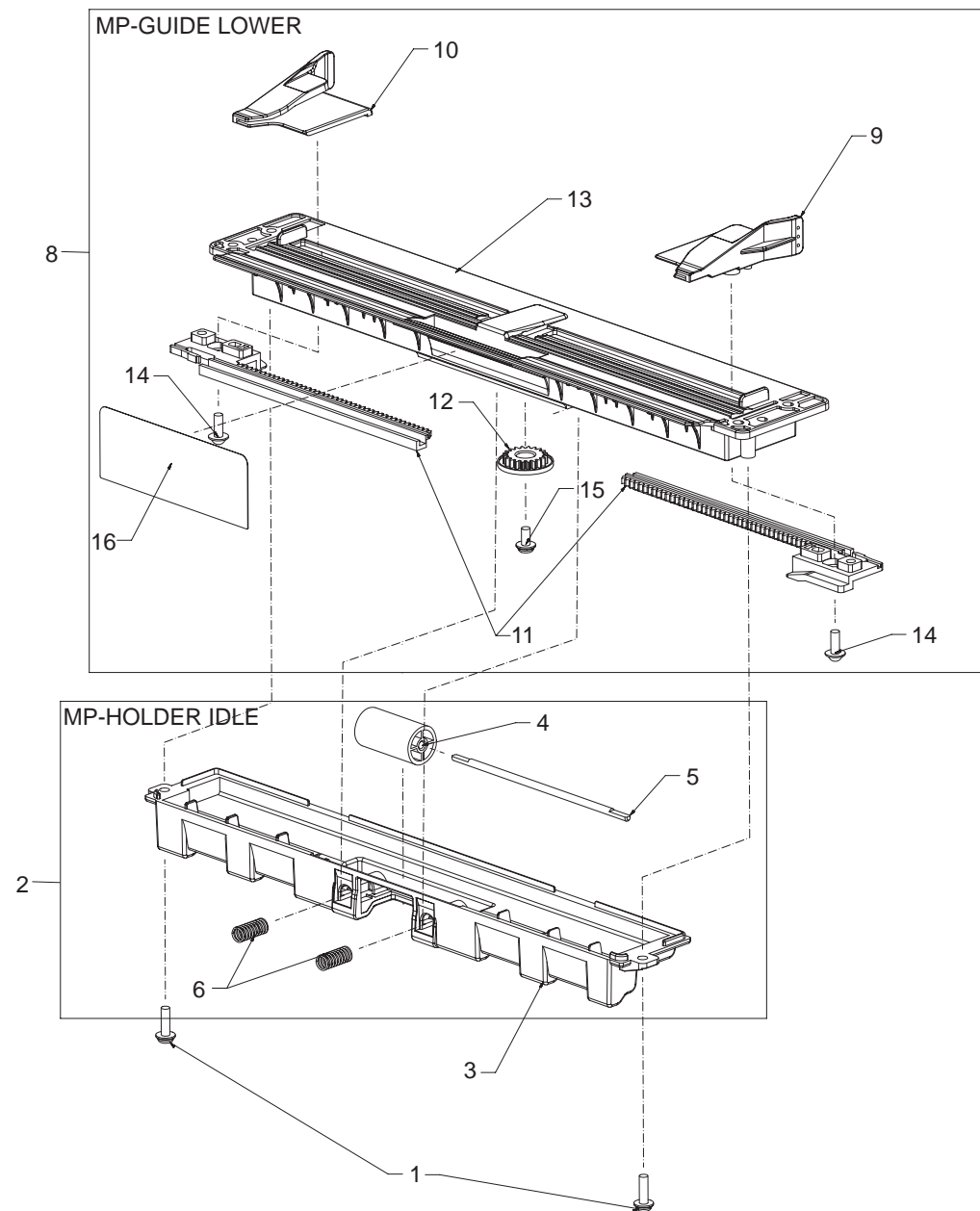
FRAME Parts List

SA : SERVICE AVAILABLE, SNA : SERVICE not AVAILABLE

Drawer#	Part Code	Description	Qty	Service	Remark
117	JC93-00310A	FRAME BASE-PICK UP	1	SA	
118	JC61-04100A	HOUSING-PICK_UP	1	SA	
119	JC73-00340A	RUBBER-PICK UP	1	SA	
120	JC93-00323A	FRAME-ROLLER EXIT	1	SA	
121	JC66-02771A	SHAFT-EXIT F_DOWN	1	SA	
122	JC73-00263A	RUBBER-EXIT F DOWN	4	SA	
123	JC93-00324A	FRAME-ROLLER DECURL	2	SNA	
124	6107-001163	SPRING-CS	1	SA	
125	JC61-02702B	HOLDER-EXIT ROLLER	1	SNA	
126	JC66-00824A	ROLLER-M-EXIT MAIN	1	SA	
127	JC66-00830A	ROLLER-M-EXIT FR	1	SA	
128	JC93-00324B	FRAME-ROLLER DECURL	2	SNA	
129	6107-001163	SPRING-CS	1	SA	
130	JC61-01172A	HOLDER-M-EXIT F/DOWN	1	SNA	
131	JC66-00824A	ROLLER-M-EXIT MAIN	1	SA	
132	JC66-00830A	ROLLER-M-EXIT FR	1	SA	

Drawer#	Part Code	Description	Qty	Service	Remark
133	JC93-00325A	FRAME-UPPER CRUM	1	SA	
134	JC39-01480A	HARNESS-CRUM	1	SA	
135	JC61-04065A	HOLDER-CRUM_LOWER	1	SA	
136	JC61-04066A	HOLDER-CRUM_UPPER	1	SA	
137	JC65-00048A	TERMINAL-CRUM	4	SA	
138	JC96-01672A	ELA UNIT-TERMINAL TR L	5	SA	
139	JC61-00031A	SPRING ETC--HV LARGE	1	SNA	
140	JC70-40912A	ICT-SHAFT HV LARGE	1	SA	
141	JC96-04732A	ELA UNIT-SWING	1	SA	
142	0205-001281	GREASE-BEARING	0.034	SNA	
143	6031-001051	WASHER-PLAIN	3	SNA	
144	6044-000001	RING-CS	3	SNA	
145	JC61-02265A	BRACKET-SWING DUPLEX	1	SNA	
146	JC66-01635A	GEAR-SWING DR 19	3	SA	
147	JC97-03857A	LSU	1	SA	
148	JC90-01031A	DUPLEX	1	SA	

5-1. MP (1P)



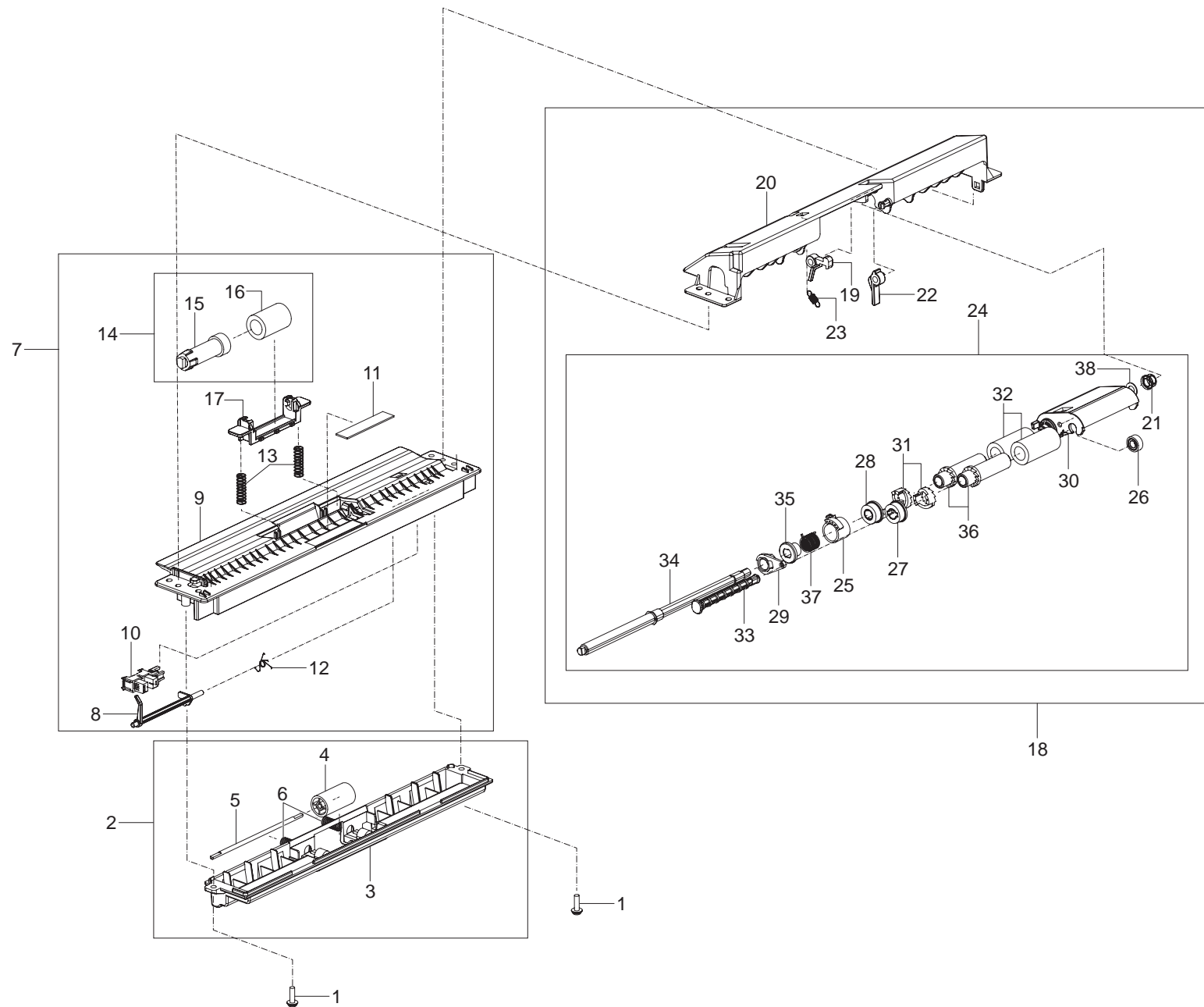
MP (1P) Parts List

SA : SERVICE AVAILABLE, SNA : SERVICE not AVAILABLE

Drawer#	Part Code	Description	Qty	Service	Remark
0	JC90-01044A	MP	1	SA	ML-331xD
1	6003-000196	SCREW-TAPTYPE	2	SNA	
2	JC90-01038A	MP-HOLDER IDLE	1	SNA	
3	JC63-02873A	COVER-ROLLER	1	SA	
4	JC66-02798A	ROLLER-IDLE	1	SA	
5	6043-001409	PIN-ETC	1	SNA	
6	6107-002824	SPRING-CS	2	SA	
7	0205-001080	GREASE-BEARING	0.009	SNA	
8	JC90-01042A	MP-GUIDE LOWER	1	SNA	

Drawer#	Part Code	Description	Qty	Service	Remark
9	JC70-00546B	ADJUST-MANUAL_L	1	SNA	
10	JC70-00547B	ADJUST-MANUAL_R	1	SNA	
11	JC70-00304A	ADJUST RACK-M-MANUAL	2	SA	
12	JC66-00387A	GEAR-RACK_PINION	1	SA	
13	JC61-04060A	GUIDE-LOWER_MP_1	1	SA	
14	6002-000440	SCREW-TAPPING	2	SNA	
15	6003-000264	SCREW-TAPTYPE	1	SNA	
16	JC63-03074A	SHEET-MP	1	SA	

5-1. MP (50P)



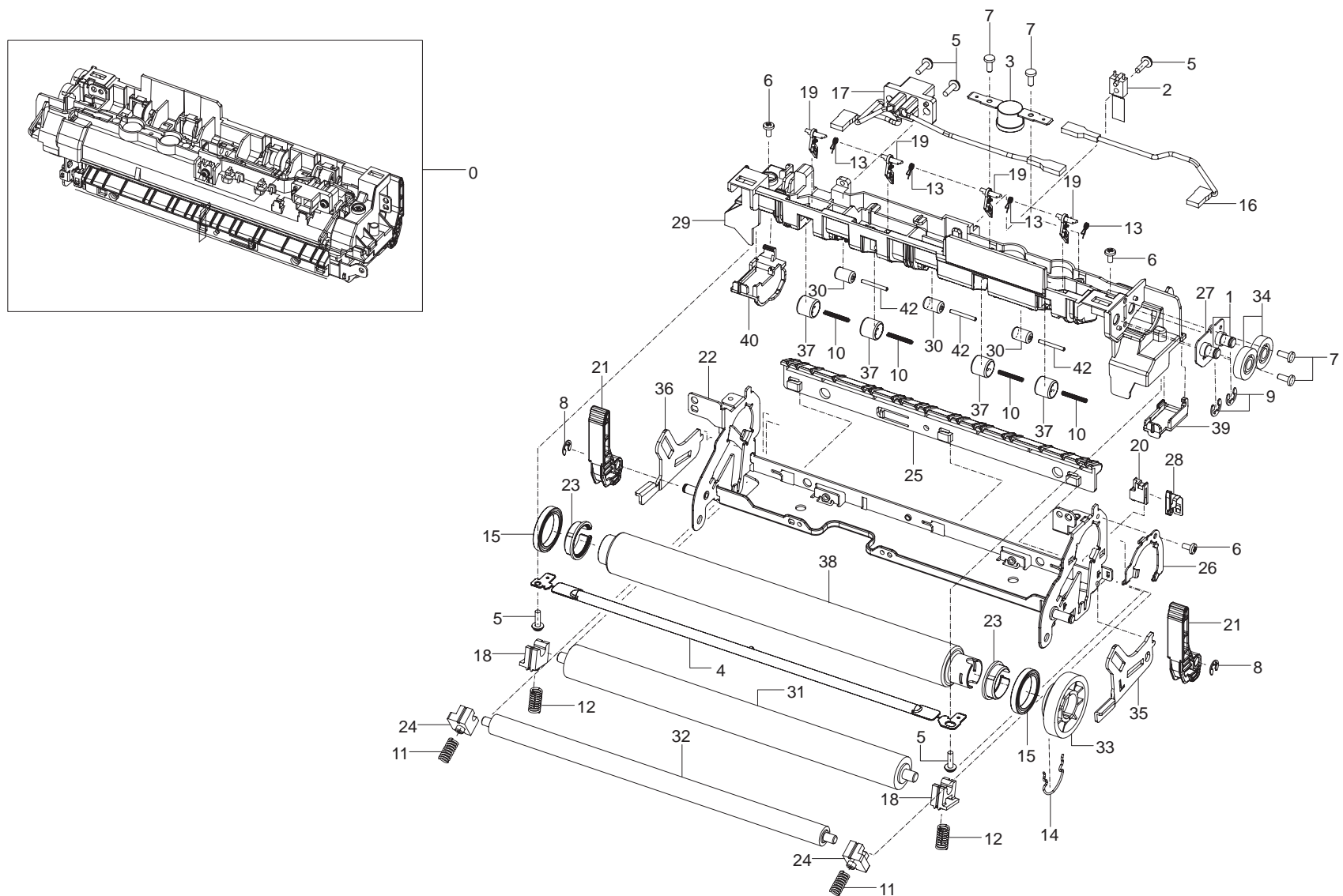
MP (50P) Parts List

SA : SERVICE AVAILABLE, SNA : SERVICE not AVAILABLE

Drawer#	Part Code	Description	Qty	Service	Remark
0	JC90-01043A	MP	1	SA	ML-331xND ML-371x series
1	6003-000196	SCREW-TAPTYPE	2	SNA	
2	JC90-01038A	MP-HOLDER IDLE	1	SNA	
3	JC63-02873A	COVER-ROLLER	1	SA	
4	JC66-02798A	ROLLER-IDLE	1	SA	
5	6043-001409	PIN-ETC	1	SNA	
6	6107-002824	SPRING-CS	2	SA	
7	JC90-01039A	MP-LOWER	1	SNA	
8	JC66-02766A	ACTUATOR-EMPTY_MP	1	SA	
9	JC61-04061A	GUIDE-LOWER_MP	1	SA	
10	0604-001393	PHOTO-INTERRUPTER	1	SA	
11	JC73-00141A	RPR-PAD CASSETTE	1	SA	
13	6107-002776	SPRING-CS	2	SA	
14	JC90-01032A	CASSETTE-ROLLER RETARD	1	SNA	
15	JC67-00465A	COUPLER-TORQUE_LIMITER	1	SA	
16	JC73-00328A	RUBBER-TL	1	SA	
17	JC61-04101A	HOLDER-RETARD_SHAFT	1	SA	
18	JC90-01040A	MP-UPPER	1	SNA	
19	JC66-02767A	ACTUATOR-ARM_MP	1	SA	

Drawer#	Part Code	Description	Qty	Service	Remark
20	JC61-04058A	GUIDE-UPPER_MP	1	SA	
21	JB72-00819A	PMO-BUSH	1	SA	
22	JC61-04057A	STOPPER-MP	1	SA	
23	6107-002780	SPRING-ES	1	SA	
24	JC90-01041A	MP-PICK UP	1	SNA	
25	JC61-02806A	COLLAR-MP	1	SNA	
26	JC66-01918A	GEAR-IDLE PICK UP	1	SA	
27	JC66-02075A	GEAR-JOINT	1	SA	
28	JC66-02085A	GEAR-JOINT2_MP	1	SNA	
29	JC61-02260A	HOLDER-SHAFT	1	SNA	
30	JC61-04059A	HOUSING-PICKUP_MP	1	SA	
31	JB72-00845A	PMO-PICK UP CLUTCH SUB	2	SA	
32	JC73-00295B	RUBBER-PICK_UP	2	SA	
33	JC66-02073A	SHAFT-PICK UP SUB	1	SNA	
34	JC66-02765A	SHAFT-PICKUP_MP	1	SA	
35	JC61-02807A	SLEEVE-CLUTCH MP	1	SNA	
36	JC61-02808A	SLEEVE-MP	2	SNA	
37	6107-001537	SPRING-TS	1	SA	
38	6031-001255	WASHER-PLAIN	1	SA	

5-2. FUSER



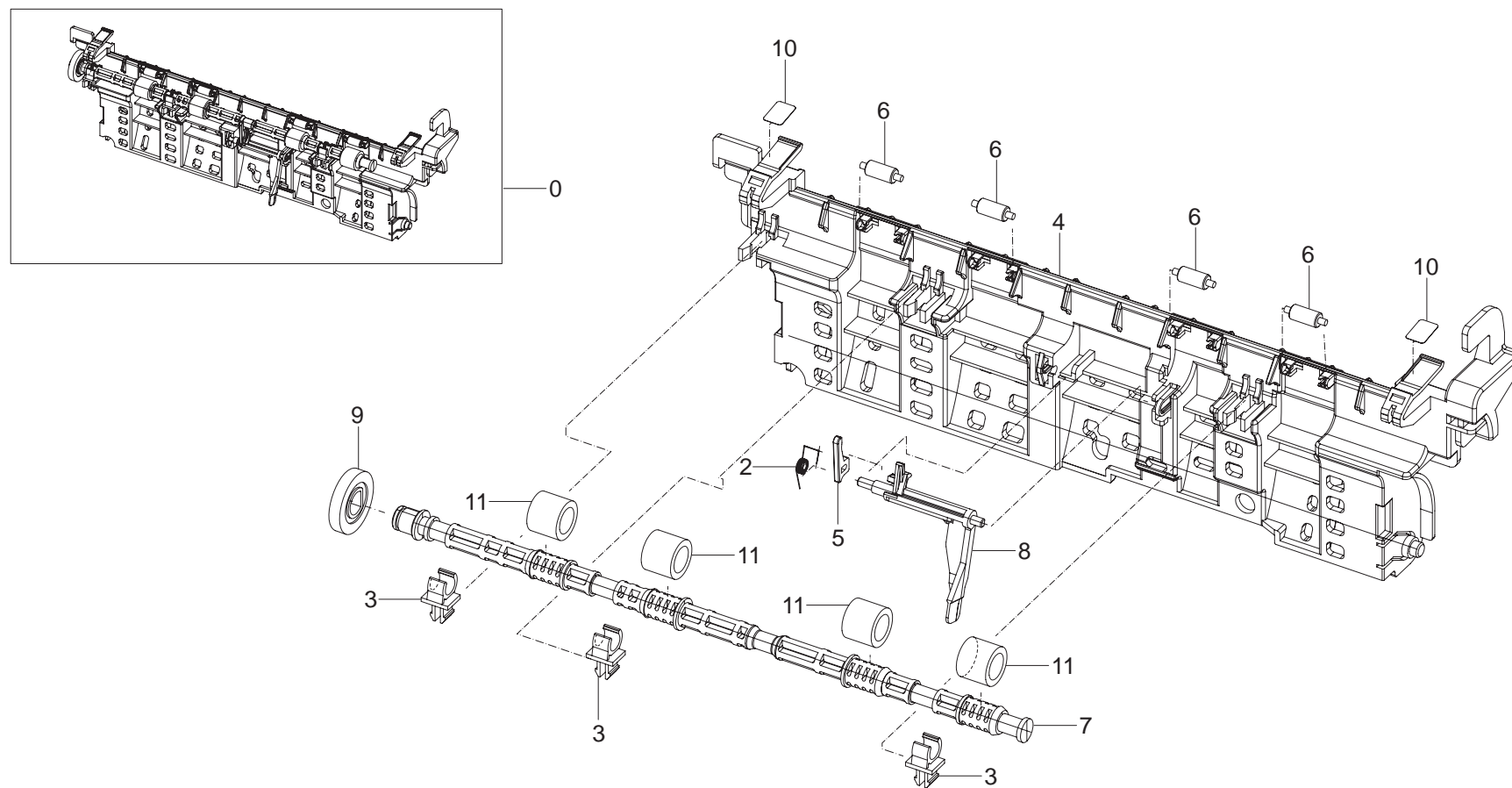
FUSER Parts List

SA : SERVICE AVAILABLE, SNA : SERVICE not AVAILABLE

Drawer#	Part Code	Description	Qty	Service	Remark
0	JC91-01023A	FUSER	1	SA	110V
0	JC91-01024A	FUSER	1	SA	220V
1	0205-001080	GREASE-BEARING	0.018	SNA	
2	1404-001640	THERMISTOR-NTC ASSY	1	SNA	
3	4712-001091	THERMOSTAT	1	SA	
4	4713-001565	LAMP-HALOGEN	1	SNA	110V
4	4713-001566	LAMP-HALOGEN	1	SNA	220V
5	6003-000196	SCREW-TAPTYPE	5	SNA	
6	6003-000269	SCREW-TAPTYPE	3	SNA	
7	6003-000282	SCREW-TAPTYPE	4	SA	
8	6044-000125	RING-E	2	SA	
9	6044-000231	RING-E	2	SA	
10	6107-001188	SPRING-ETC	4	SA	
11	6107-001246	SPRING-CS	2	SA	
12	6107-001267	SPRING-CS	2	SA	
13	6107-002817	SPRING-ETC	4	SNA	
14	6107-002818	SPRING-ETC	1	SNA	
15	6601-001725	BEARING-BALL	2	SNA	
16	JC39-01487A	HARNESS-FUSER JOINT	1	SA	
17	JC39-01488A	HARNESS-FUSER CON	1	SA	
18	JC61-01960A	BUSH-PR_1ST	2	SNA	
19	JC61-02154A	GUIDE-CLAW	4	SNA	
20	JC61-02631A	GUIDE-GROUND_PR	1	SNA	

Drawer#	Part Code	Description	Qty	Service	Remark
21	JC61-04085A	HOLDER-JAM	2	SNA	
22	JC61-04092A	FRAME-FUSER	1	SNA	
23	JC61-04093A	BUSH-HR	2	SNA	
24	JC61-04095A	BUSH-PR_2ND	2	SNA	
25	JC61-04096A	GUIDE-INPUT	1	SNA	
26	JC61-04114A	BRACKET-BEARING	1	SNA	
27	JC61-04122A	BRACKET-GEAR	1	SNA	
28	JC63-02885A	GROUND-PR_M	1	SNA	
29	JC63-02899A	COVER-FUSER	1	SNA	
30	JC66-01312A	ROLLER-IDLE	3	SA	
31	JC66-01663A	ROLLER-PRESSURE	1	SA	
32	JC66-01664A	ROLLER-PRESSURE_2ND	1	SA	
33	JC66-02775A	GEAR-FUSER	1	SNA	
34	JC66-02776A	GEAR-IDLE_EXIT	2	SNA	
35	JC66-02795A	LEVER-LINK_JAM_L	1	SNA	
36	JC66-02796A	LEVER-LINK_JAM_R	1	SNA	
37	JC66-02844A	ROLLER-IDLE_EXIT	4	SNA	
38	JC66-02846A	ROLLER-HEAT	1	SNA	
39	JC67-00498A	CAP-LAMP_L	1	SNA	
40	JC67-00499A	CAP-LAMP_R	1	SNA	
41	JC68-01581C	LABEL-CAUTION	1	SNA	
42	JC70-20901A	IEX-SHAFT IDLE,F/UP	3	SA	

5-3. FRAME-REAR



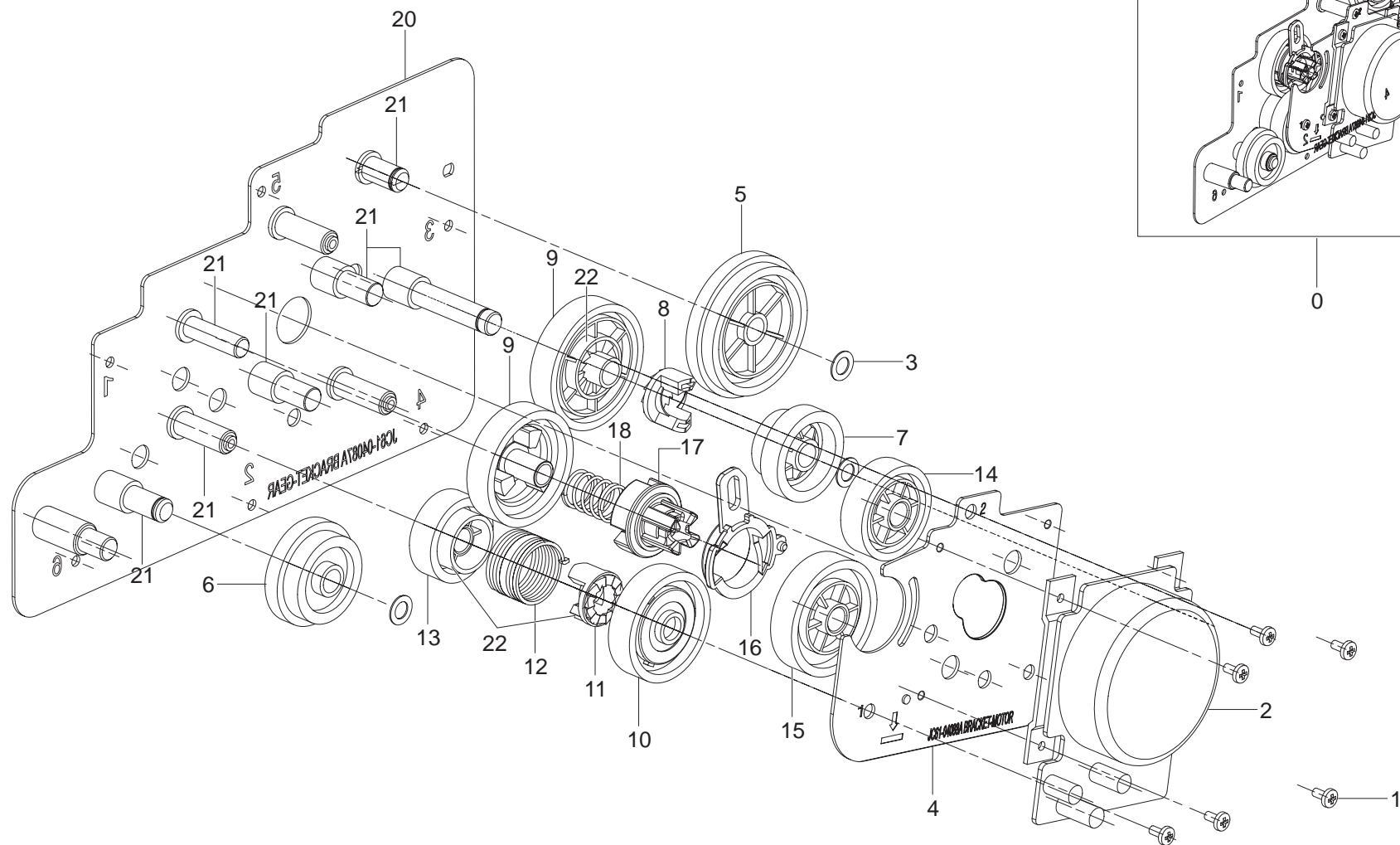
FRAME-REAR Parts List

SA : SERVICE AVAILABLE, SNA : SERVICE not AVAILABLE

Drawer#	Part Code	Description	Qty	Service	Remark
0	JC93-00334A	FRAME-REAR	1	SA	
2	6107-002670	SPRING-ETC	1	SNA	
3	JC61-02158A	BUSH-TX	3	SNA	
4	JC61-04084A	GUIDE-REAR	1	SNA	
5	JC61-04133A	HOLDER-ACTUATOR	1	SNA	
6	JC66-01661A	ROLLER-IDLE_EXIT	4	SNA	

Drawer#	Part Code	Description	Qty	Service	Remark
7	JC66-02773A	SHAFT-EXIT_F/UP	1	SNA	
8	JC66-02774A	ACTUATOR-EXIT	1	SNA	
9	JC66-02777A	GEAR-EXIT_Z19	1	SNA	
10	JC68-02610A	LABEL-ONE TOUCH	2	SNA	
11	JC73-00304A	RUBBER-EXIT_F/UP	4	SA	

5-4. DRIVE



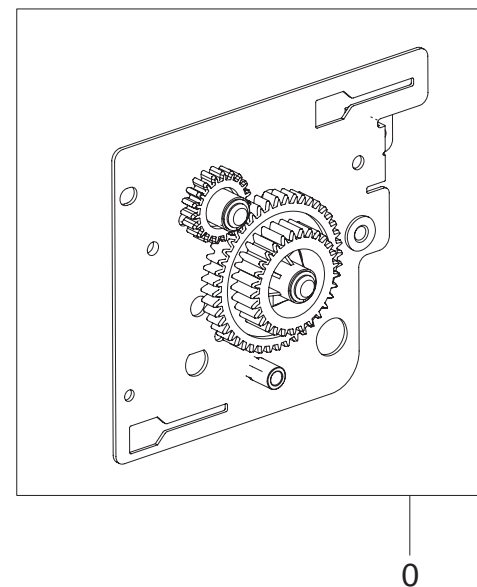
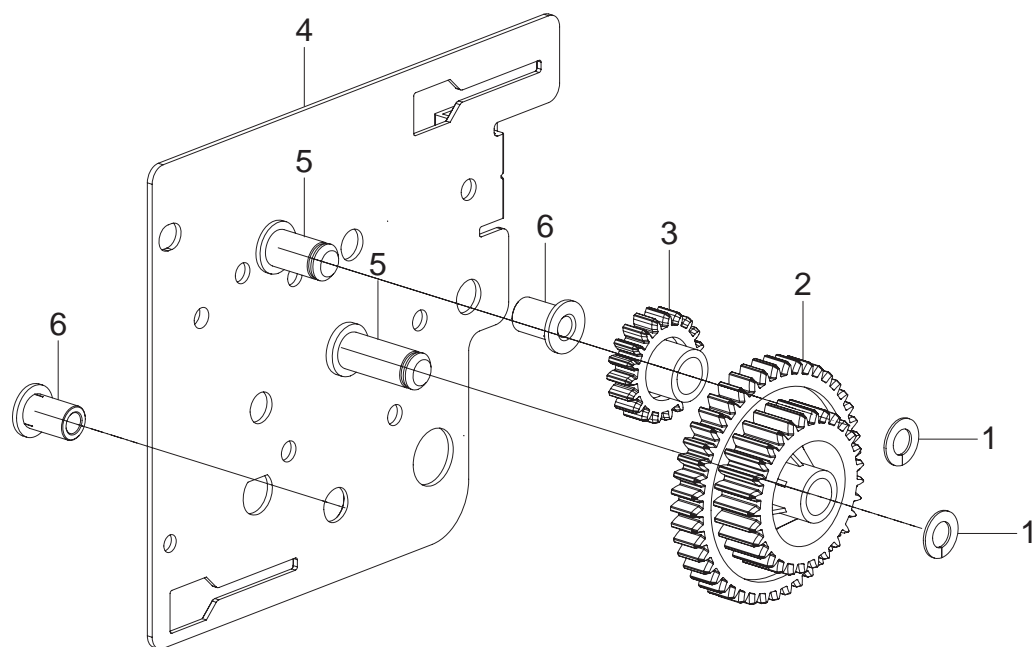
DRIVE Parts List

SA : SERVICE AVAILABLE, SNA : SERVICE not AVAILABLE

Drawer#	Part Code	Description	Qty	Service	Remark
0	JC93-00326A	DRIVE	1	SA	
1	6003-000269	SCREW-TAPTYPE	6	SNA	
2	JC31-00144A	MOTOR BLDC	1	SNA	
3	6031-000023	WASHER-PLAIN	3	SNA	
4	JC61-04088A	BRACKET-MOTOR	1	SA	
5	JC66-02779A	GEAR-EXIT 95-81	1	SA	
6	JC66-02790A	GEAR-FEED 65-28	1	SA	
7	JC66-02782A	GEAR-FUSER DR 29	1	SA	
8	JC66-00340A	GEAR-HUB CLUTCH	1	SA	
9	JC66-02781A	GEAR-FUSER DR IN 79	1	SA	
10	JC66-02789A	GEAR-OPC DR IN 69	1	SA	
11	JC70-00589A	HUB-CLUTCH	1	SA	

Drawer#	Part Code	Description	Qty	Service	Remark
12	6107-002783	SPRING-TS	1	SA	
13	JC66-02788A	GEAR-OPC DR OUT 53	1	SA	
14	JC66-02785A	GEAR-IDLE 59	1	SA	
15	JC66-02786A	GEAR-IDLE 73	1	SA	
16	JC67-00503A	COUPLER-CAM	1	SA	
17	JC67-00504A	COUPLER	1	SA	
18	6107-002785	SPRING-CS	1	SA	
19	JC66-02787A	GEAR-COUPLER 73	1	SA	
20	JC61-04087A	BRACKET-GEAR	1	SA	
21	0205-001080	GREASE-BEARING	0.269	SNA	
22	0205-001281	GREASE-BEARING	0.053	SNA	

5-5. DRIVE FEED



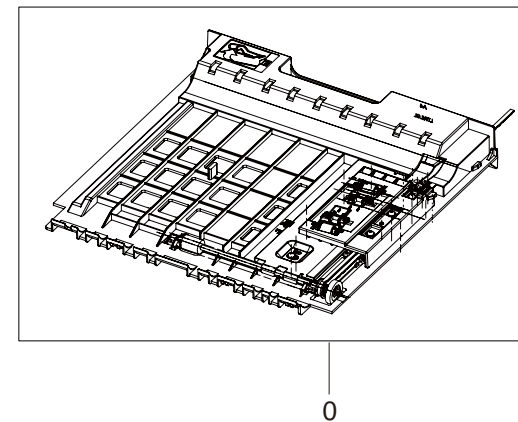
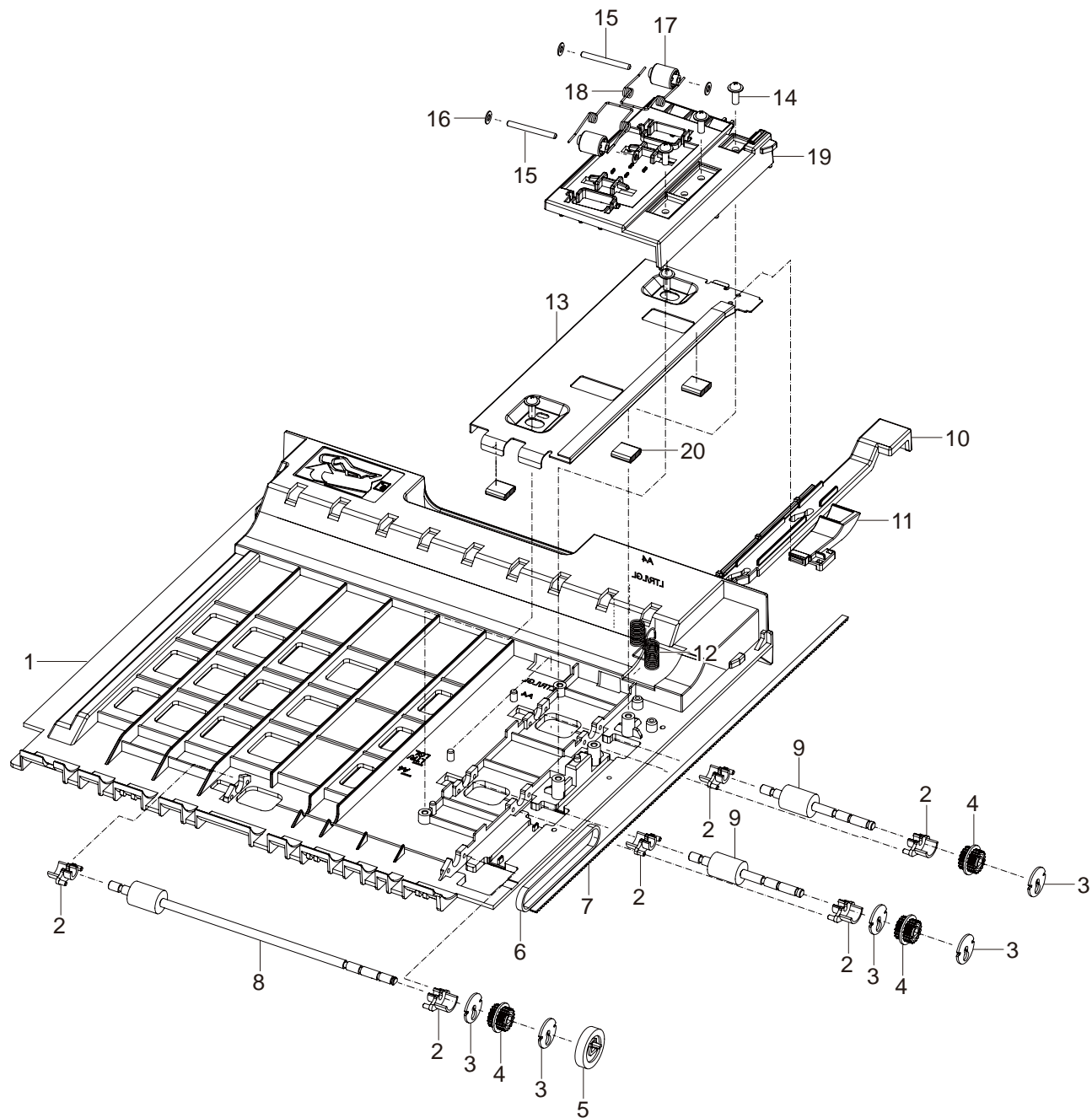
DRIVE FEED Parts List

SA : SERVICE AVAILABLE, SNA : SERVICE not AVAILABLE

Drawer#	Part Code	Description	Qty	Service	Remark
0	JC93-00329A	DRIVE-FEED	1	SA	
1	6031-001255	WASHER-PLAIN	2	SA	
2	JC66-02792A	GEAR-FEED 44-29	1	SA	
3	JC66-02793A	GEAR-MP IDLE 19	1	SA	

Drawer#	Part Code	Description	Qty	Service	Remark
4	JC61-04086A	BRACKET-FEED	1	SA	
5	0205-001080	GREASE-BEARING	0.045	SNA	
6	JC61-04105A	BUSH-SHAFT	2	SA	

5-6. Duplex



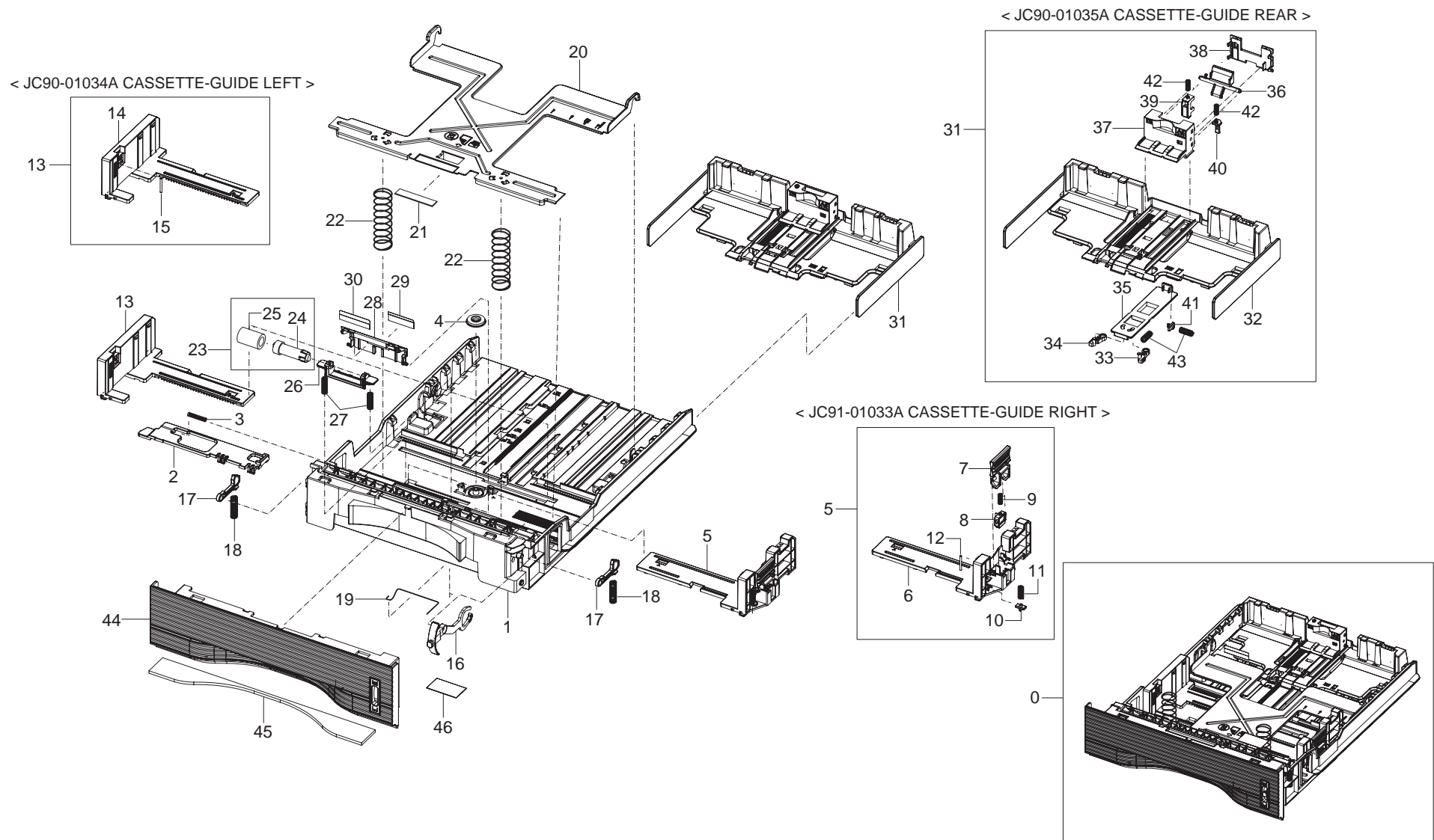
Duplex Parts List

SA : SERVICE AVAILABLE, SNA : SERVICE not AVAILABLE

Drawer#	Part Code	Description	Qty	Service	Remark
0	JC90-01031A	DUPLEX	1	SA	
1	JC61-04052A	FRAME-DUPLEX_BASE	1	SA	
2	JC61-00665A	BUSH-M-FEED, DUP	6	SA	
3	JC66-00900A	PULLEY-M-18-DUMMY_DUP	5	SA	
4	JC66-00899A	PULLEY-18_DUP	3	SA	
5	JC66-00038A	GEAR-EXIT F/DOWN	1	SA	
6	6602-001588	BELT-TIMING GEAR	1	SA	
7	JC66-20901A	BELT-TIMMING	1	SA	
8	JC66-01657A	ROLLER-FEED_DUP2	1	SNA	
9	JC66-00901A	ROLLER-FEED_DUP	2	SA	
10	JC66-02761A	LEVER-ALIGN_DUPLEX	1	SA	

Drawer#	Part Code	Description	Qty	Service	Remark
11	JC61-04055A	GUIDE-PAPER_DUPLEX	1	SA	
12	JC65-00051A	TERMINAL-GND-DUPLEX	1	SA	
13	JC61-04053A	BRACKET-DUPLEX_ALIGN	1	SA	
14	6002-000440	SCREW-TAPPING	5	SNA	
15	JC66-00444A	SHAFT-IDLE ROLL, DUP	2	SA	
16	JK72-00058A	PCT-SILP WASHER	4	SNA	
17	JC66-00896A	ROLLER-M-IDLE_DUP	2	SA	
18	6107-001156	SPRING-TS	2	SA	
19	JC61-04054A	GUIDE-DUPLEX_UPPER	1	SA	
20	JC63-03028A	GASKET-DUPLEX	3	SNA	

6. CASSETTE



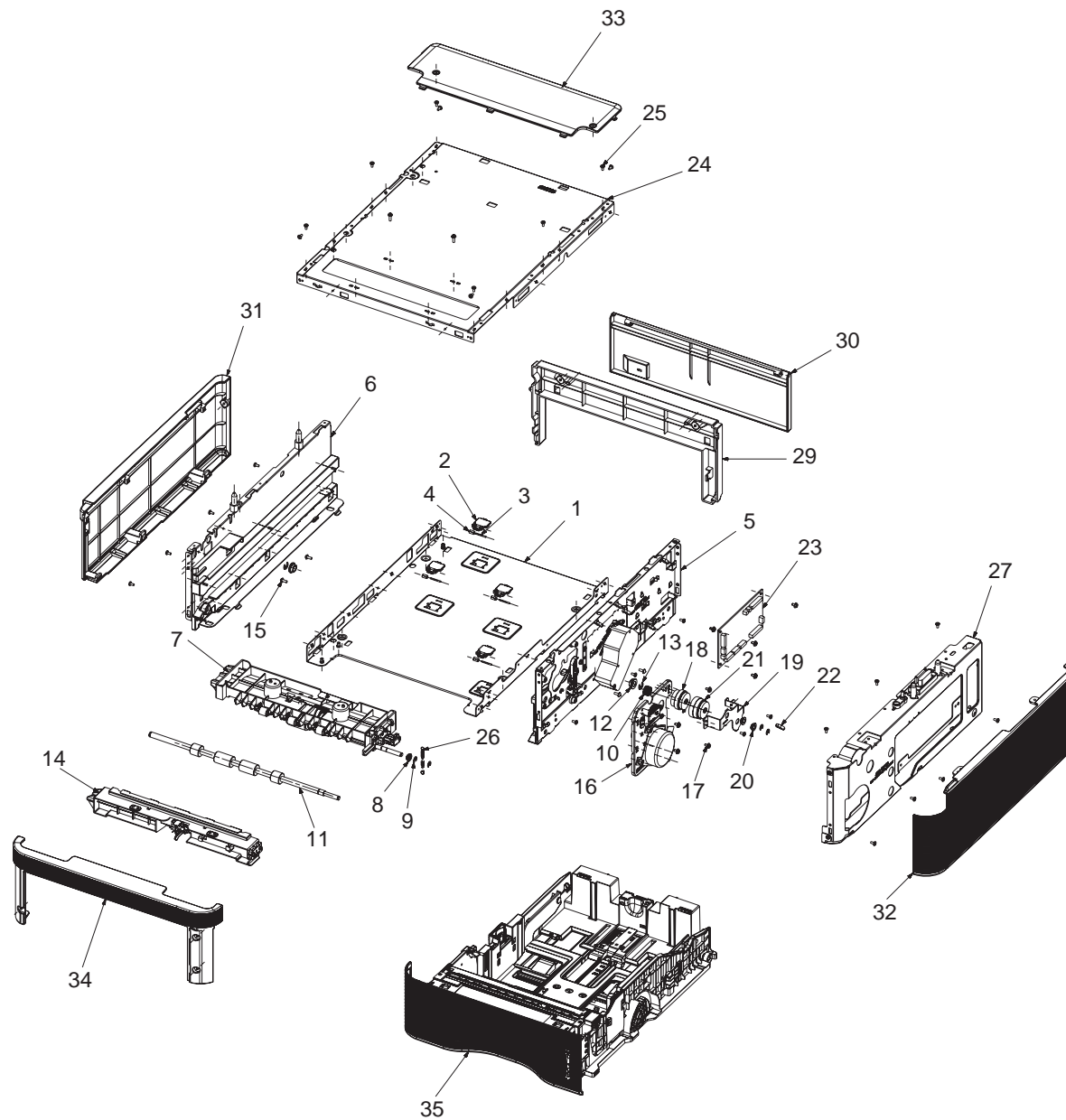
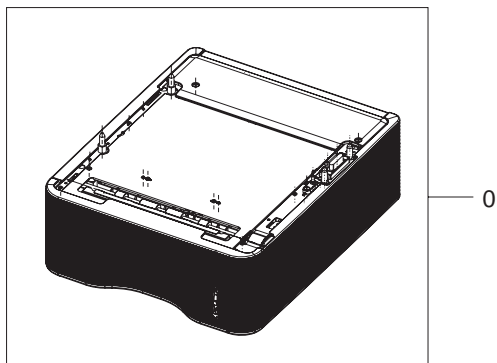
CASSETTE Parts List

SA : SERVICE AVAILABLE, SNA : SERVICE not AVAILABLE

Drawer#	Part Code	Description	Qty	Service	Remark
0	JC90-01036A	CASSETTE	1	SA	
1	JC61-04127A	FRAME-CASSETTE	1	SA	
2	JC64-00611A	LOCKER-PLATE	1	SNA	
3	JG61-70531A	SPRING ETC-LOCKER,PLATE	1	SA	
4	JG66-40003A	GEAR-PINION	1	SA	
5	JC90-01033A	CASSETTE-GUIDE RIGHT	1	SA	
6	JC61-04128A	GUIDE-SIDE RIGHT	1	SA	
7	JC66-02826A	LEVER-SIDE RIGHT	1	SA	
8	JC61-04131A	STOPPER-SIDE RIGHT	1	SA	
9	6107-002777	SPRING-CS	1	SA	
10	JC64-00426A	KNOB-GUIDE_REAR	1	SNA	
11	JC61-00013A	SPRING ETC-PAD	1	SNA	
12	JC70-20901A	IEX-SHAFT IDLE,F/UP	1	SA	
13	JC90-01034A	CASSETTE-GUIDE LEFT	1	SA	
14	JC61-04129A	GUIDE-SIDE LEFT	1	SA	
15	JC70-20901A	IEX-SHAFT IDLE,F/UP	1	SA	
16	JC64-00609A	INDICATOR-PAPER	1	SA	
17	JC64-00610A	LOCKER-CASSETTE	2	SNA	
18	6107-001287	SPRING-CS	2	SNA	
19	JC63-02932A	GROUND-CASSETTE	1	SNA	
20	JC61-04126A	PLATE-P-KNOCK_UP	1	SA	
21	JC73-00141A	RPR-PAD CASSETTE	1	SA	
22	6107-002779	SPRING-CS	2	SA	
23	JC90-01032A	CASSETTE-ROLLER RETARD	1	SA	

Drawer#	Part Code	Description	Qty	Service	Remark
24	JC67-00465A	COUPLER-TORQUE_LIMITER	1	SA	
25	JC73-00328A	RUBBER-TL	1	SA	
26	JC61-04101A	HOLDER-RETARD_SHAFT	1	SA	
27	6107-002778	SPRING-CS	2	SA	
28	JC63-02917A	COVER-CASSETTE	1	SA	
29	JC63-02933A	SHEET-RETARD	1	SNA	
30	JC63-02984A	SHEET-CASSETTE	1	SA	
31	JC90-01035A	CASSETTE-GUIDE REAR	1	SA	
32	JC61-04130A	GUIDE-REAR PAPER	1	SA	
33	JC64-00612A	LOCKER-RIGHT GUIDE	1	SNA	
34	JC64-00613A	LOCKER-LEFT GUIDE	1	SNA	
35	JC64-00614A	LOCKER-SLIDE GUIDE	1	SNA	
36	JC66-02827A	LEVER-GUIDE REAR	1	SA	
37	JC70-00594A	ADJUST-REAR UPPER	1	SA	
38	JC70-00595A	ADJUST-REAR LOWER	1	SA	
39	JC64-00615A	LOCKER-ADJUST REAR	1	SNA	
40	JC61-04132A	SUPPORT-GUIDE LOCK	1	SA	
41	JC64-00426A	KNOB-GUIDE_REAR	1	SNA	
42	6107-002777	SPRING-CS	2	SA	
43	JC61-00013A	SPRING ETC-PAD	2	SNA	
44	JC64-00608A	HANDLE-CASSETTE	1	SA	
45	JC63-03025A	ABSORBER-CST BOTTOM	1	SNA	
46	JC68-00780A	LABEL(P)-CAUTION PRINTING	1	SNA	

7. OPTION CASSETTE (SCF)



OPTION CASSETTE (SCF) Parts List

SA : SERVICE AVAILABLE, SNA : SERVICE not AVAILABLE

Drawer#	Part Code	Description	Qty	Service	Remark
0	JC90-01061B	SCF	1	SNA	
1		FRAME-BOTOM	1	SNA	
2	JC61-03841A	HOLDER-ROLLER_CST	4	SA	
3	JC70-20901A	IEX-SHAFT IDLE,F/UP	4	SA	
4		ROLLER-CST BOTTOM	4	SNA	
5		ELA UNIT-FRAME RIGHT	1	SNA	
6		ELA UNIT-FRAME LEFT	1	SNA	
7	JC82-00189A	A/S ASSY-UNIT PICKUP	1	SA	
8	JC61-00699A	BUSH-D6/L4	1	SA	
9	6044-000125	RING-E	4	SA	
10	JC81-08619A	GEAR-DRV PICK UP	1	SNA	
11	JC81-08919A	CSP-SCF ROLLER REGI	1	SNA	
12	JC61-00426A	BUSH-8/5	2	SA	
13		RING-E(ID5)	2	SNA	
14		A/S CON-UNIT-FEED	1	SNA	
15		SCREW-TAPPING (M3XL8)	1	SNA	
16	JC82-00190A	A/S ASSY-UNIT DRIVE	1	SA	
17		SCREW-HEX(M3XL6)	1	SNA	

Drawer#	Part Code	Description	Qty	Service	Remark
18	JC47-00033A	CLUTCH-ELECTRIC	1	SNA	
19	JC81-08748A	CSP-SCF BRKT CLUTCH REGI(M)	1	SA	
20	JC61-00699A	BUSH-D6/L4	2	SA	
21	JC47-00034A	CLUTCH-ELECTRIC	1	SA	
22	6502-001130	CABLE CLAMP	4	SA	
23	JC82-00192A	A/S ASSY-PBA SCF MAIN	1	SA	
24		FRAME-TOP	1	SNA	
25		SCREW-TAPTITE (M3XL6)	1	SNA	
26		SPRING-ES	1	SNA	
27		MEA UNIT-RIGHT DUMMY	1	SNA	
28		SCREW-TAPPING (M3XL8)	1	SNA	
29		COVER-REAR DUMMY	1	SNA	
30		COVER-CASSETTE	1	SNA	
31	JC81-08741A	CSP-COVER-LEFT	1	SA	
32	JC81-08740A	CSP-COVER-RIGHT	1	SA	
33	JC81-08742A	CSP-COVER-TOP_DUMMY	1	SA	
34	JC81-08739A	CSP-COVER-FRONT_DUMMY	1	SA	
35	JC82-00191A	A/S ASSY-CASSETTE	1	SA	