



Parts Catalog - ML-1910/1915 ML-2525W/2580N

Solution

1. Speed

- ML- 2525/2525W/2580N : 24 ppm in A4
- ML- 1910/1915 : 18 ppm in A4

2. Processor

- Jupiter4e 150 Mhz
- Chorus3 360 Mhz (Only 2525W, 2580N)

3. Printer Language Emulations

- SPL, PCL6 (Only 2580N)

4. Memory

- 8 MB
- 64 MB (Only 2525W, 2580N)

5. Interfaces

- One USB port
- One 10/100 BaseT network connector (2580N)
- One IEEE 802.11 b/g wireless LAN (2525W)

6. Toner cartridge

- Initial : 0.7K (1910/ 1915)
1K (2525/2525W/2580N)
- Sales : 1.5K / 2.5K two types



This Parts Catalog is a property of Samsung Electronics Co., Ltd.
Any unauthorized use of this manual can be punished under
applicable International and/or domestic law.

ExplodedView and Parts List

Contents

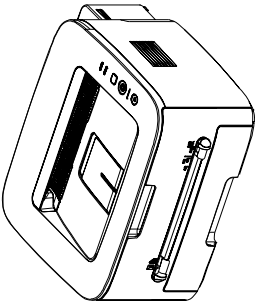
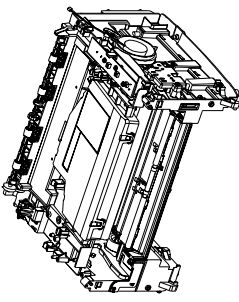
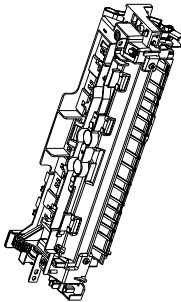
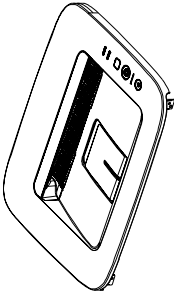
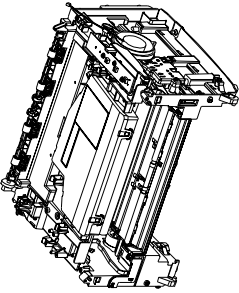
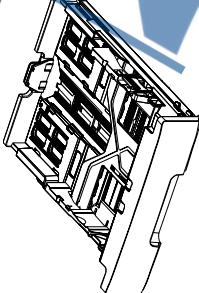
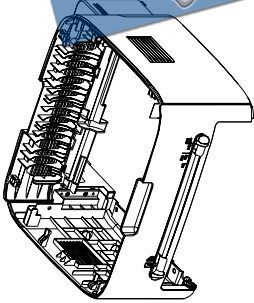
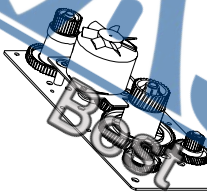
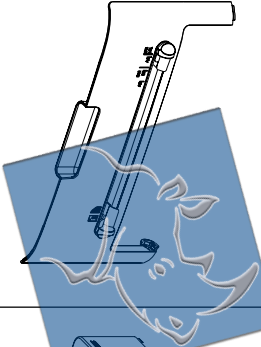
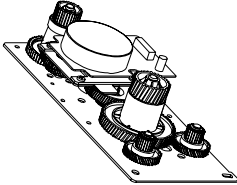
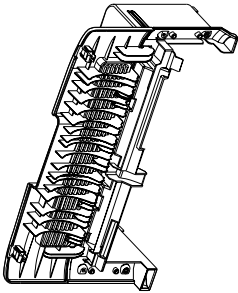

Power Cord	2
Thumbnail	3
1. Main	4
2. Top Cover	6
3. Cover	8
4. Front Cover	10
5. Rear Cover	12
6. Main Frame	14
7. Main Drive Bracket (ML-1910)	18
8. Main Drive Bracket (ML-2580N)	20
9. Base Frame-Pick Up	22
10. Fuser	24
11. Cassette	26

Power Cord

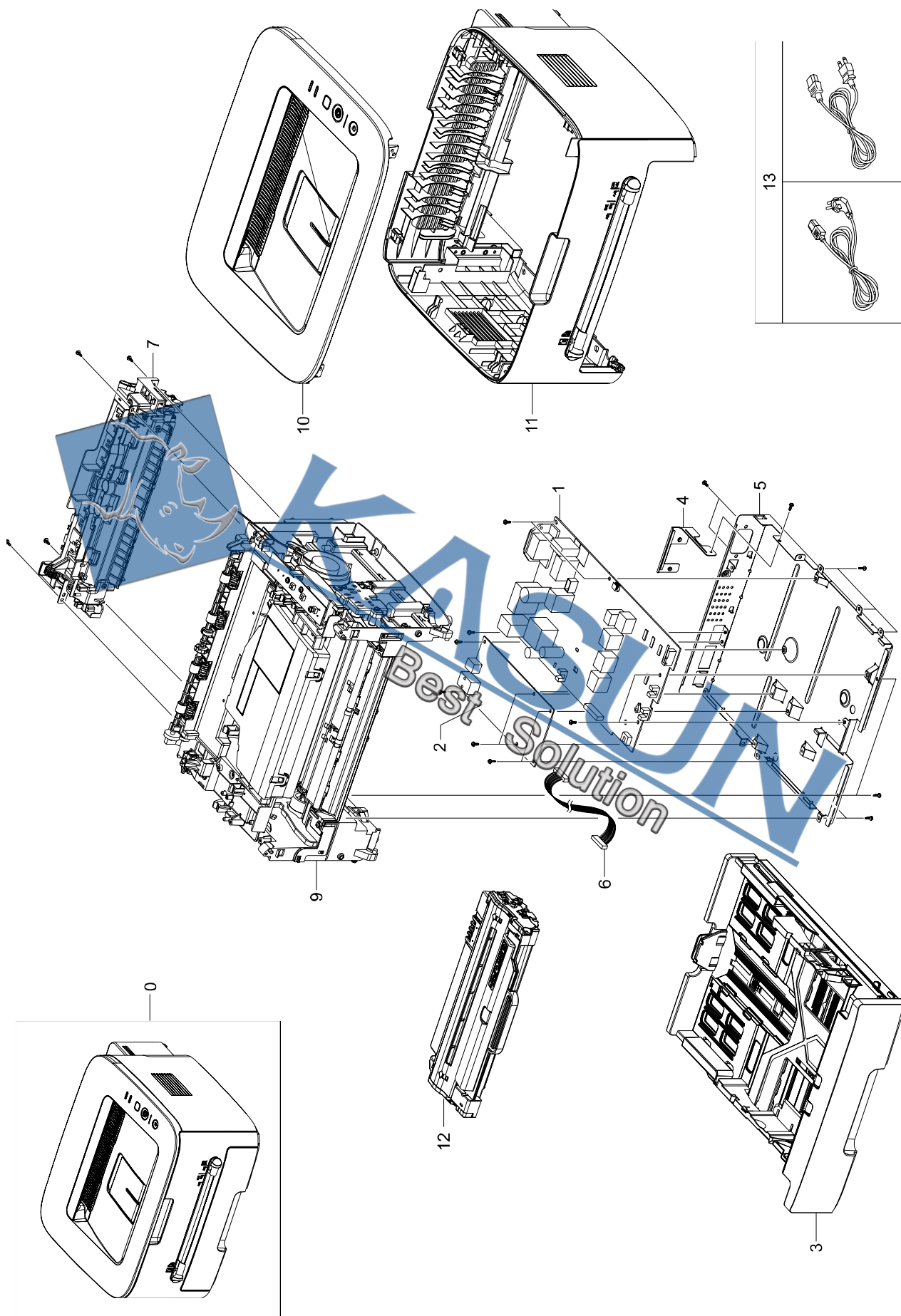
Power Cord differs by countries. Please check your country code.

Top View	Side View	Part Code Usable Country Code
		3903-000020 XAZ
		3903-000042 SEE / STS / XSA / XSG XSS / XEV / XEG
		3903-000050 XFA / XIP
		3903-000067 XEU / XSS
		3903-000082 XIL
		3903-000085 XAA / XAX
		3903-000133 KOR
		3903-000146 XBH
		3903-000182 ETS
		3903-000227 TED

Thumbnail

	1. MAIN		6. FRAME MAIN1		11. FUSER
	2. COVER TOP		7. FRAME MAIN2		12. CASSETTE
	3. COVER		ML-1910 8. DRIVE MAIN-BRACKET		
	4. COVER FRONT		ML-2580N 9. DRIVE MAIN-BRACKET		
	5. COVER REAR		10. FRAME BASE-PICK UP		

1. Main



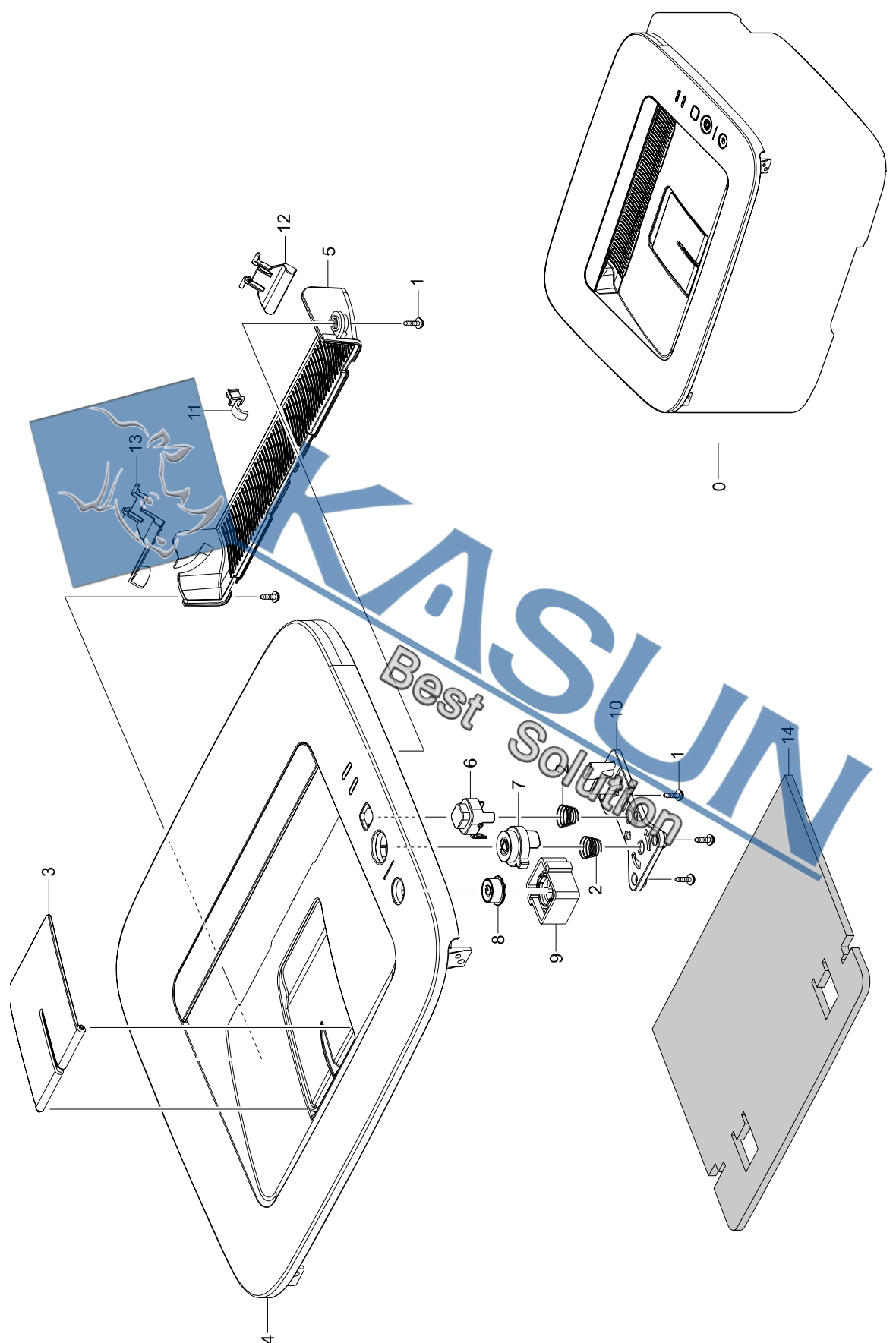
Main Parts List

SA : SERVICE AVAILABLE, SNA : SERVICE not AVAILABLE

Drawer#	SEC_Code	Description	QTY	Service	Remark
0	ML-1910	A4 Mono laser printer, 18 ppm	1		
0	ML-1915	A4 Mono laser printer, 18 ppm			
0	ML-2525	A4 Mono laser printer, 24 ppm	1		
0	ML-2525W	A4 Mono laser printer, 24 ppm	1		
0	ML-2580N	A4 Mono laser printer, 24 ppm , Network	1		
1	JC44-00178A	SMPS/HVPS-V1	1	SA	110V
1	JC44-00179A	SMPS/HVPS-V2	1	SA	220V
2	JC92-02135A	PBA-CONTROLLER	1	SA	ML-2580N/Others
2	JC92-02135B	PBA-CONTROLLER	1	SA	ML-2580N/SEE
2	JC92-02135C	PBA-MAIN	1	SA	ML-2580N/XEV
2	JC92-02135D	PBA-MAIN	1	SA	ML-2581N/XIL
2	JC92-02135E	PBA-MAIN	1	SA	ML-2580NK
2	JC92-02135F	PBA-MAIN	1	SA	ML-2580N/ETSP
2	JC92-02136A	PBA-CONTROLLER	1	SA	ML-191x/Others
2	JC92-02136B	PBA-CONTROLLER	1	SA	ML-191x/SEE
2	JC92-02136C	PBA-MAIN	1	SA	ML-191x/ML-1915K
2	JC92-02136D	PBA-MAIN	1	SA	ML-191x/XIL
2	JC92-02137A	PBA-CONTROLLER	1	SA	ML-2525/Others
2	JC92-02137B	PBA-CONTROLLER	1	SA	ML-2525/SEE
2	JC92-02137C	PBA-MAIN	1	SA	ML-2525K
2	JC92-02137D	PBA-MAIN	1	SA	ML-2526/XIL

Drawer#	SEC_Code	Description	QTY	Service	Remark
3	JC90-00939A	CASSETTE	1	SA	ML-1915/2525
3	JC90-00939B	CASSETTE	1	SA	ML-1910/2580N
4	JC61-00945A	BRACKET-P-INLET	1	SA	
5	JC63-02410A	SHIELD-ENGINE	1	SNA	
6	JC39-01235A	WIRING-HARNESS-ENGINE	1	SA	ML-1910
6	JC33-01240A	CBF HARNESS-ENGINE	1	SC	ML-2580N
7	JC91-00946A	FUSER	1	SA	110V
7	JC91-00946B	FUSER	1	SA	110V
7	JC91-00945A	FUSER	1	SA	220V
7	JC91-00945B	FUSER	1	SA	220V
9	JC93-00038B	FRAME MAIN	1	SA	ML-1910
9	JC93-00038A	FRAME MAIN	1	SA	ML-2580N
10	JC95-01017B	COVER-TOP	1	SA	ML-1910
10	JC95-01017A	COVER-TOP	1	SA	ML-2580N
10	JC95-01091B	COVER-TOP	1	SA	ML-1915/2525
11	JC95-01020B	COVER	1	SNA	ML-1910
11	JC95-01020A	COVER	1	SNA	ML-2580N
11	JC95-01092B	COVER	1	SNA	ML-1915/2525
12	-	CARTRIDGE-TONER	1	SNA	
13	-	CBF-POWER CORD	1	SA	Refer to Power cord page

2. Top Cover



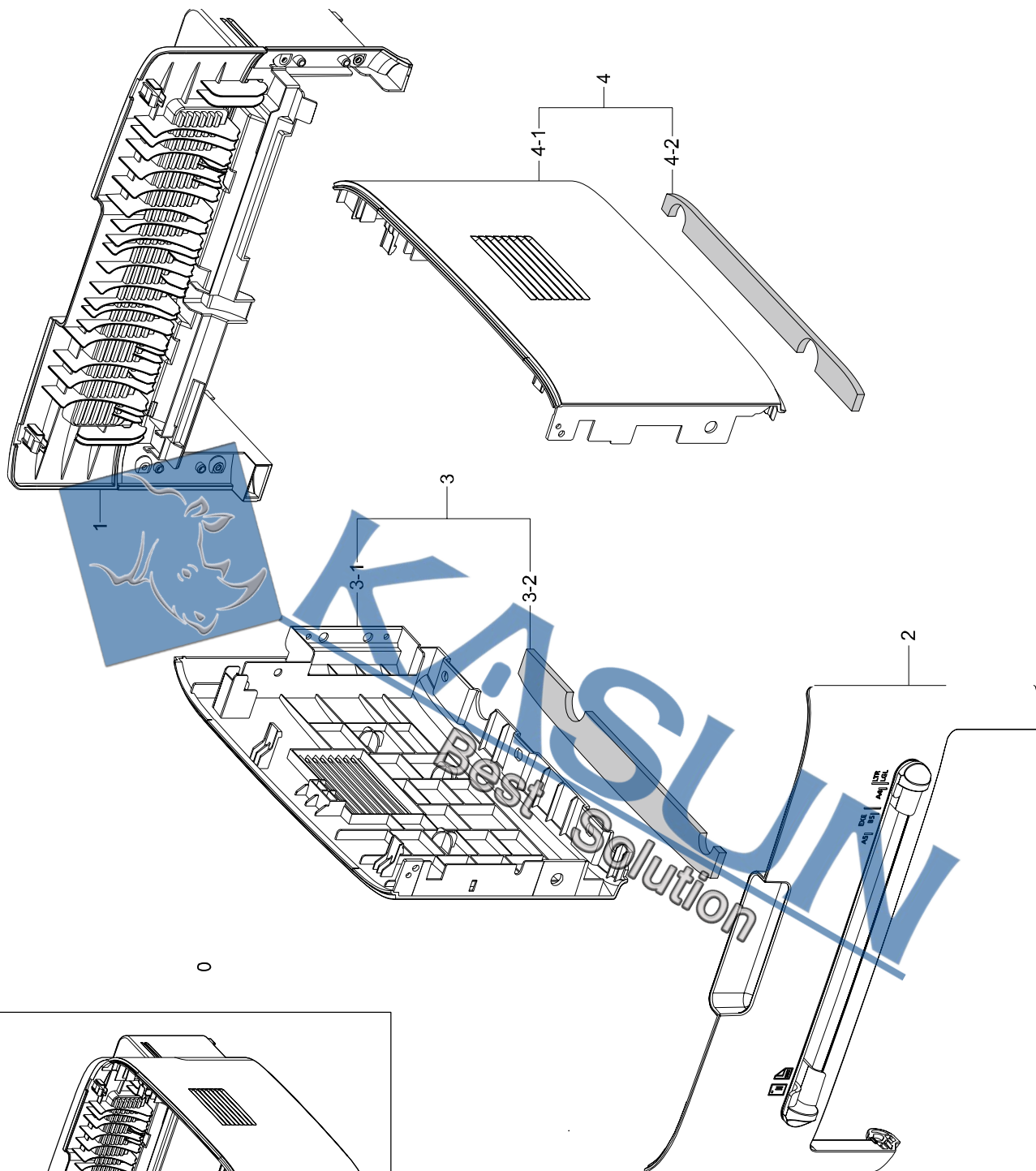
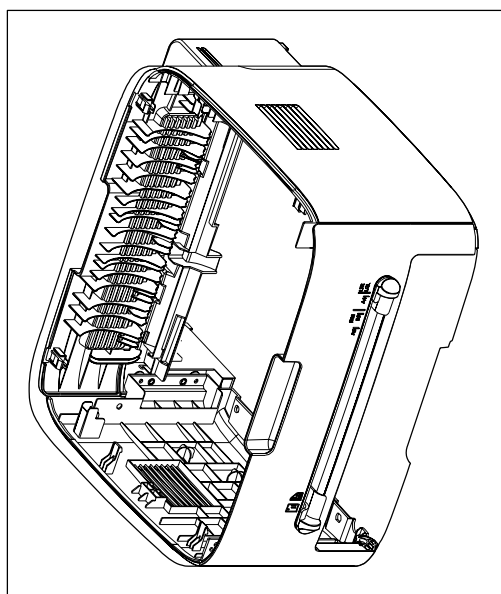
Top Cover Parts List

Drawer#	SEC_Code	Description	QT'y	Service	Remark
0	JC95-01017B	COVER-TOP	1	SA	ML-1910
0	JC95-01017A	COVER-TOP	1	SA	ML-2580N
0	JC95-01091B	COVER-TOP	1	SA	ML-1915/2525
1	6003-000196	SCREW-TAPTYPE	5	SA	
2	6107-001169	SPRING-CS	2	SA	
3	JC72-01346H	PMO-STACKER	1	SA	ML-1910/2580N
3	JC72-01346J	PMO-STACKER	1	SA	ML-1915/2525
4	JC63-02335B	COVER-TOP	1	SNA	ML-1910
4	JC63-02335A	COVER-TOP	1	SNA	ML-2580N
4	JC63-02416A	COVER-TOP	1	SNA	ML-1915
4	JC63-02416B	COVER-TOP	1	SNA	ML-2525
5	JC63-02390A	COVER-EXIT	1	SNA	ML-1910/2580N

SA : SERVICE AVAILABLE, SNA : SERVICE not AVAILABLE

Drawer#	SEC_Code	Description	QT'y	Service	Remark
5	JC63-02390B	COVER-EXIT	1	SNA	ML-1915/2525
6	JC64-00300A	KEY-PRINT_SCREEN	1	SA	
7	JC64-00300A	KEY-START	1	SA	ML-1910/2580N
7	JC64-00501B	KEY-START	1	SA	ML-1915/2525
8	JC64-00502A	KEY-POWER	1	SA	ML-1910/2580N
8	JC64-00502B	KEY-POWER	1	SA	ML-1915/2525
9	JC64-00304A	KEY-POWER HOLDER	1	SA	
10	JC67-00413A	LENS-LED	1	SNA	
11	JC72-00387A	PMO-BUSHING_F/DOWN	1	SA	
12	JC72-01343A	PMO-SUB_M_STACKER	1	SA	
13	JC61-03446A	STACKER-BIN-FULL	1	SNA	
14	JC72-01565A	SPONGE-COVER_TOP	1	SNA	ML-2580N

3. Cover



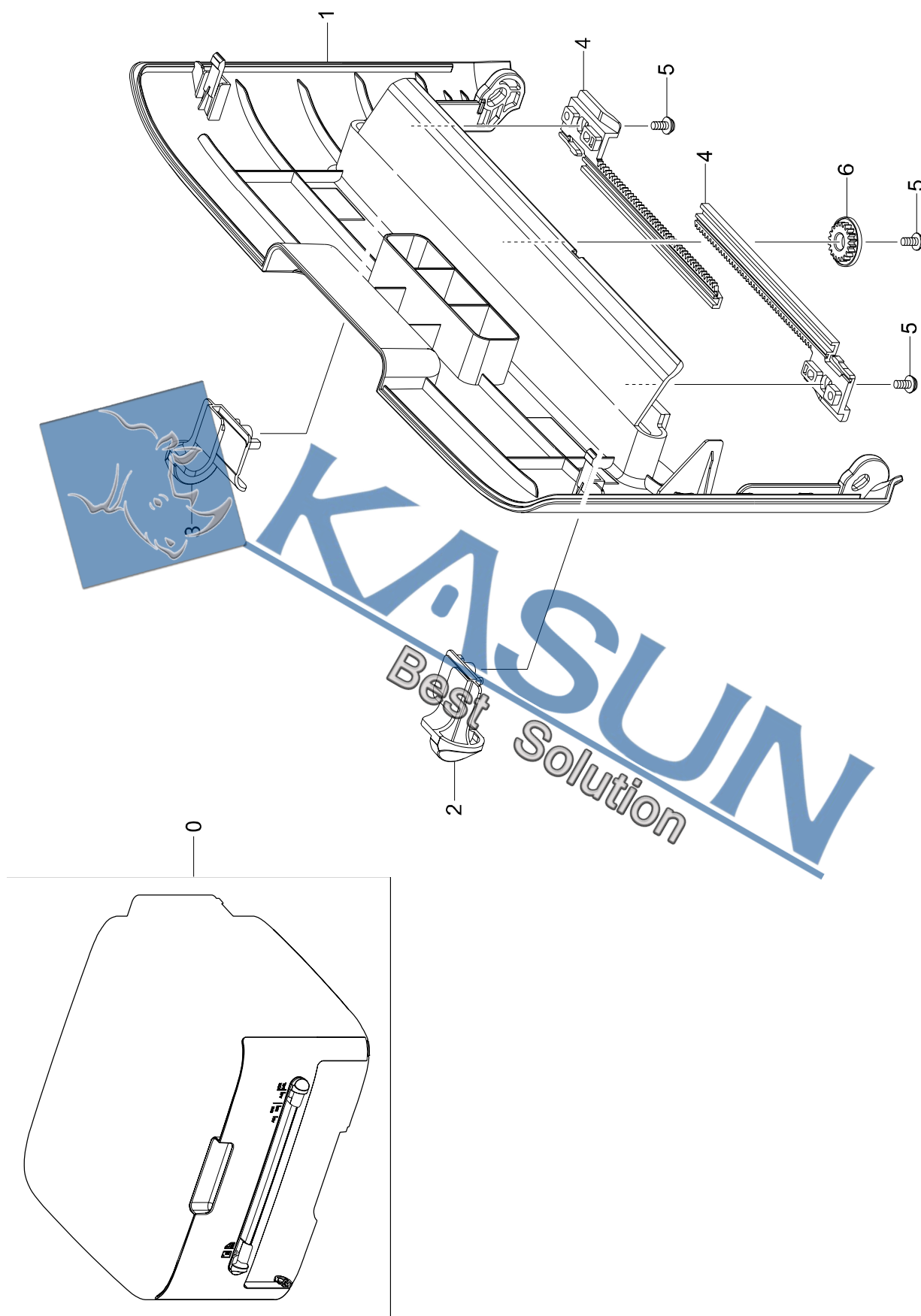
Cover Parts List

SA : SERVICE AVAILABLE, SNA : SERVICE not AVAILABLE

Drawer#	SEC_Code	Description	QT'y	Service	Remark
0	JC95-01020B	COVER	1	SA	ML-1910
0	JC95-01020A	COVER	1	SA	ML-2580N
0	JC95-01092A	COVER	1	SA	ML-1915
0	JC95-01092B	COVER	1	SA	ML-2525
1	JC95-01018B	COVER-REAR	1	SA	ML-1910
1	JC95-01018A	COVER-REAR	1	SA	ML-2580N
1	JC95-01093A	COVER-REAR	1	SA	ML-1915
1	JC95-01093B	COVER-REAR	1	SA	ML-2525
2	JC95-01019A	COVER-FRONT	1	SA	ML-1910/2580N
2	JC95-01019B	COVER-FRONT	1	SA	ML-1915/2525
3	JC63-02392A	COVER-LEFT	1	SNA	ML-1910

Drawer#	SEC_Code	Description	QT'y	Service	Remark
3	JC63-02392B	COVER-LEFT	1	SNA	ML-1915
3	JC95-01139B	COVER-LEFT	1	SNA	ML-2525
3	JC95-01139A	COVER-LEFT	1	SNA	ML-2580N
3-1	JC63-02392A	COVER-LEFT	1	SNA	ML-2580N
3-2	JC72-01566A	SPONGE-COVER_LEFT	1	SNA	ML-2580N
4	JC63-02393A	COVER-RIGHT	1	SNA	ML-1910
4	JC63-02393B	COVER-RIGHT	1	SNA	ML-1915
4	JC95-01140B	COVER-RIGHT	1	SNA	ML-2525
4	JC95-01140A	COVER-RIGHT	1	SNA	ML-2580N
4-1	JC63-02393A	COVER-RIGHT	1	SNA	ML-2581N
4-2	JC72-01567A	SPONGE-COVER_RIGHT	1	SNA	ML-2582N

4. Front Cover



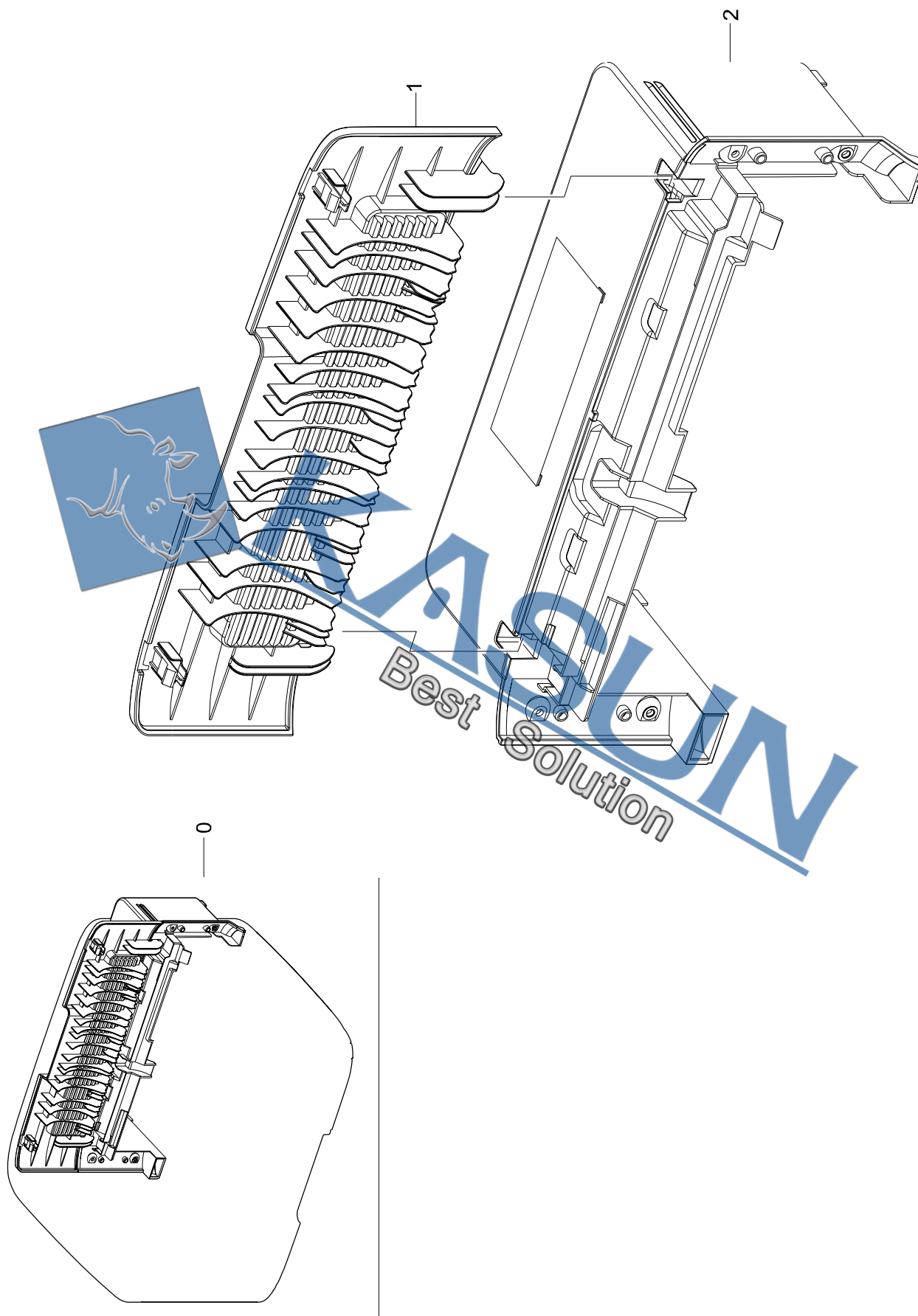
Front Cover Parts List

Drawer#	SEC_Code	Description	QT'y	Service	Remark
0	JC95-01019A	COVER-FRONT	1	SA	ML-1910/2580N
0	JC95-01019B	COVER-FRONT	1	SA	ML-1915/2525
1	JC63-02396A	COVER-FRONT	1	SNA	ML-1910/2580N
1	JC63-02396B	COVER-FRONT	1	SNA	ML-1915/2525
2	JC70-00477G	ADJUST-MENUAL_R	1	SA	ML-1910/2580N
2	JC70-00477F	ADJUST-MENUAL_R	1	SA	ML-1915/2525

SA : SERVICE AVAILABLE, SNA : SERVICE not AVAILABLE

Drawer#	SEC_Code	Description	QT'y	Service	Remark
3	JC70-00476G	ADJUST-MENUAL_L	1	SA	ML-1910/2580N
3	JC70-00476F	ADJUST-MENUAL_L	1	SA	ML-1915/2525
4	JC70-00477A	ADJUST RACK-M-MANUAL	2	SA	
5	6003-000264	SCREW-TAPTYPE	3	SNA	
6	JC66-00307A	GEAR-RACK_PINION	1	SA	

5. Rear Cover



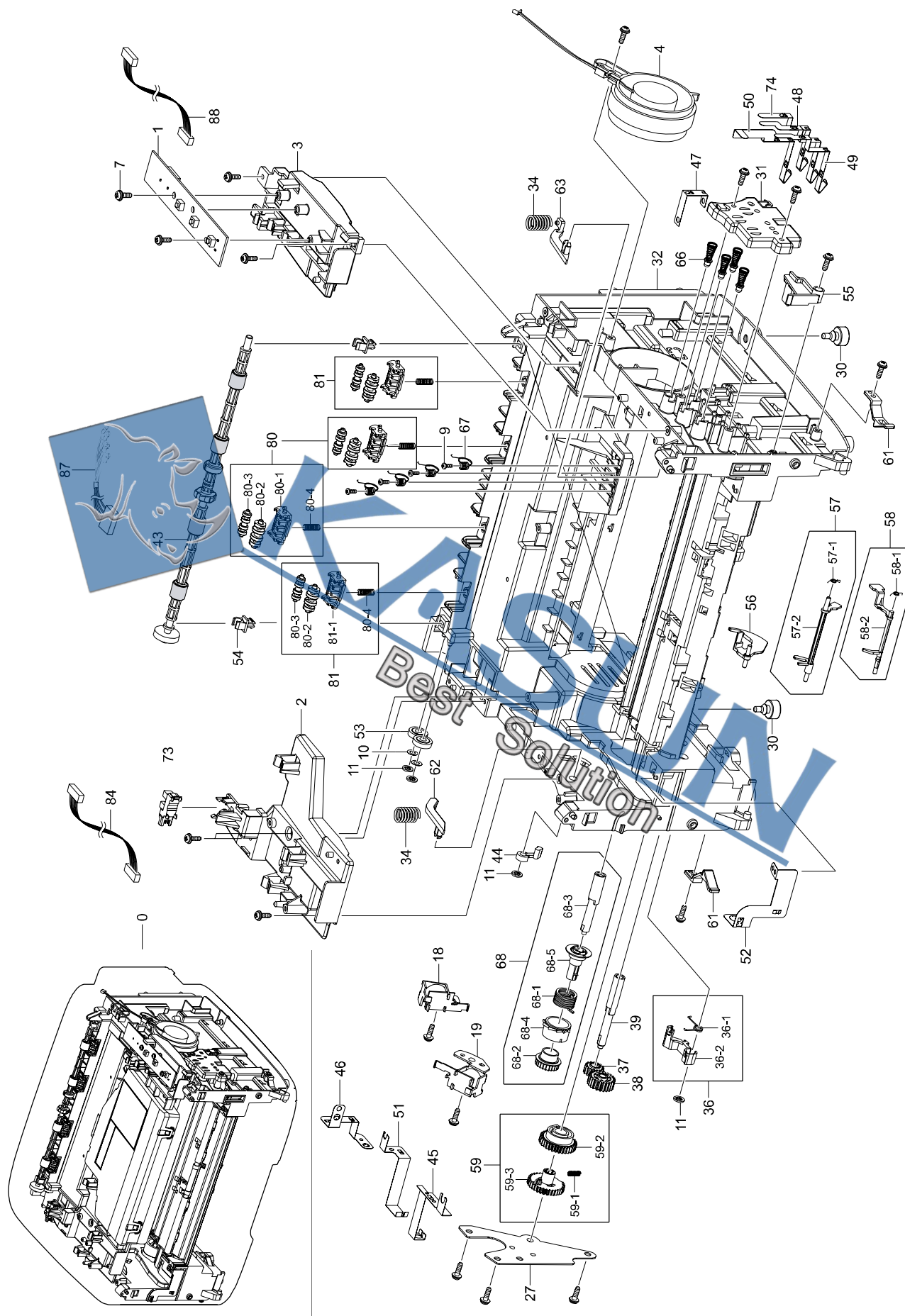
Rear Cover Parts List

SA : SERVICE AVAILABLE, SNA : SERVICE not AVAILABLE

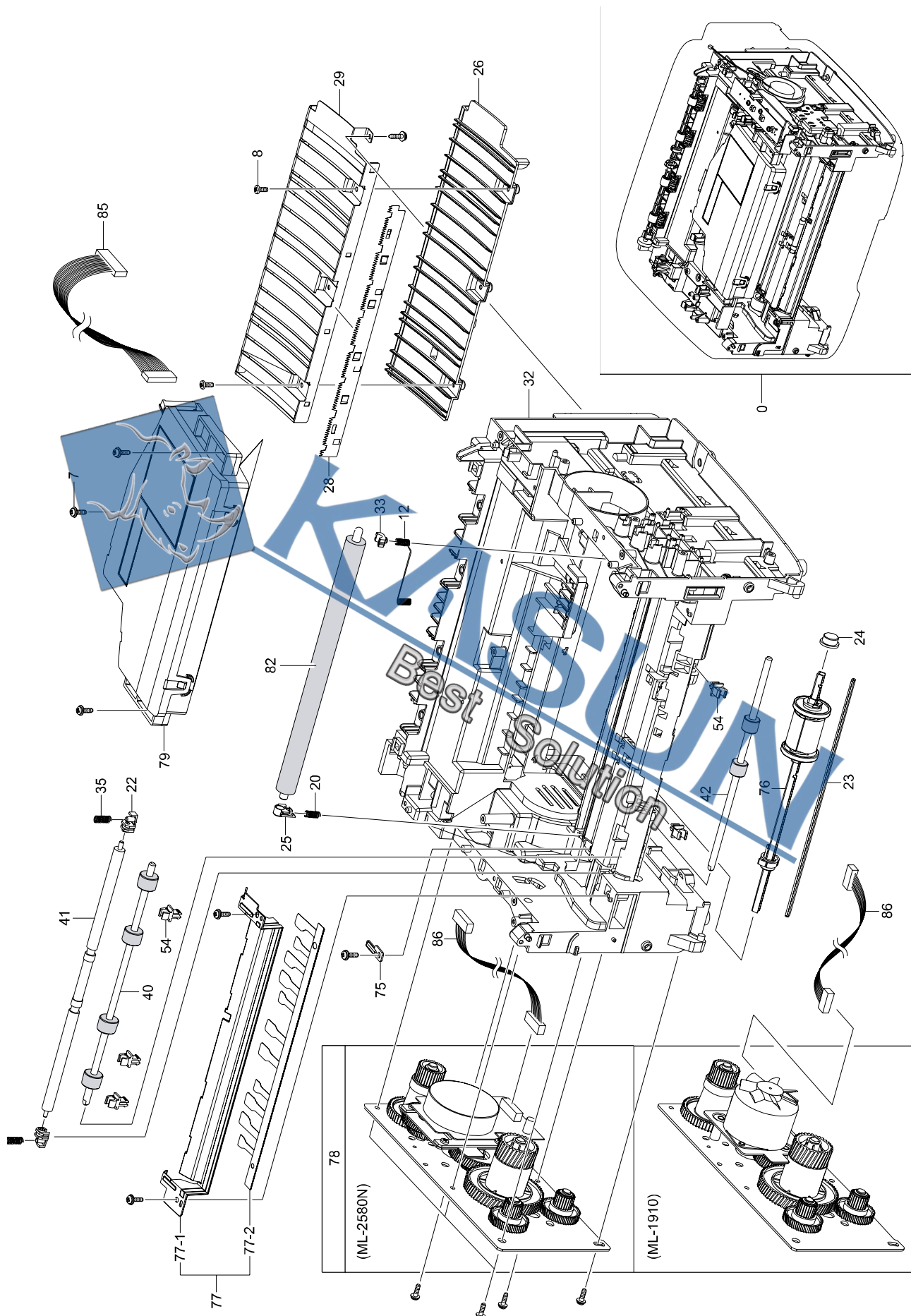
Drawer#	SEC_Code	Description	QT'y	Service	Remark
0	JC95-01018B	COVER-REAR	1	SA	ML-1910
0	JC95-01018A	COVER-REAR	1	SA	ML-2580N
0	JC95-01093A	COVER-REAR	1	SA	ML-1915/2525
1	JC63-02395B	COVER-REAR-DOWN	1	SNA	ML-1910

Drawer#	SEC_Code	Description	QT'y	Service	Remark
1	JC63-02395A	COVER-REAR-DOWN	1	SNA	ML-2580N
1	JC63-02397B	COVER-REAR-DOWN	1	SNA	ML-1915/2525
2	JC63-02394A	COVER-REAR	1	SNA	ML-1910/2580N
2	JC63-02394A	COVER-REAR	1	SNA	ML-1915/2525

6. Main Frame 1



Main Frame 2



Main Frame Parts List

Drawer#	SEC_Code	Description	QT'y	Service	Remark
0	JC93-00038B	FRAME MAIN	1	SA	ML-1910/1915
0	JC93-00038A	FRAME MAIN	1	SA	ML-2525/2580N
1	JC92-02138A	PBA-OPE	1	SA	
2	JC61-03447A	FRAME-HOLDER_LSU_L	1	SNA	
3	JC61-03448A	FRAME-HOLDER_LSU_R	1	SNA	
4	JC31-00087A	FAN-DC	1	SA	ML-2580N
7	6003-000196	SCREW-TAPTYPE	32	SA	
8	6003-000282	SCREW-TAPTYPE	2	SNA	
9	6002-000308	SCREW-TAPTYPE	4	SNA	
10	6031-001051	WASHER-PLAIN	2	SNA	
11	6044-000001	RING-CS	4	SA	
12	6107-001162	SPRING-ETC	1	SA	
18	JC33-00026A	SOLENOID-PICK UP	1	SA	
19	JC33-00025B	SOLENOID-MANUAL	1	SA	
20	6107-001370	SPRING-CS	1	SA	
22	JC61-00585A	BUSH-M-FEED IDLE	2	SA	
23	JC66-00720A	SHAFT-P-CORE	2	SA	
24	JC61-00587A	BUSH-M-PICK_UP R	1	SA	
25	JC61-00588A	BUSH-M-TR L	1	SA	
26	JC61-00594A	GUIDE-M-TR RIB	1	SA	
27	JC61-00602A	BRACKET-P-FEED	1	SA	
28	JC61-00604A	PLATE-P-SAW	1	SA	
29	JC61-00607A	GUIDE-P-TR	1	SA	
30	JC61-40001A	FOOT-ML80	2	SA	
31	JC61-03467A	HOUSING-TERMINAL	1	SNA	
32	JC61-03322A	FRAME-BASE	1	SNA	
33	JC61-02468A	BUSH-TR_L	1	SA	
34	JC61-70932A	SPRING ETC-GUIDE DEVE	2	SA	
35	JC61-70958A	SPRING ETC-TR	2	SA	
36	JC93-00106A	FRAME-LEFT STOPPER PICK UP	1	SA	
36-1	6107-001170	SPRING-TS	1	SA	

SA : SERVICE AVAILABLE, SNA : SERVICE not AVAILABLE

Drawer#	SEC_Code	Description	QT'y	Service	Remark
36-2	JC66-00377A	CAM-M-PICK_UP	1	SA	
37	JC66-00394A	GEAR-FEED 2	1	SA	
38	JC66-00395A	GEAR-IDLE 23	1	SA	
39	JC66-00398A	SHAFT-FEED	1	SA	
40	JC66-00720A	ROLLER-REGI	1	SA	
41	JC63-00527A	SHAFT-FEED IDLE	1	SA	
42	JC66-00598A	ROLLER-FEED	1	SA	
43	JC93-00097A	FRAME-ROLLER EXIT FACE DOWN	1	SA	
44	JC61-03524A	STOPPER-LEVER_DR	1	SA	
45	JC70-00308A	IPR-P-GROUND_DRIVE	1	SNA	
46	JC63-02411A	GROUND-FUSER	1	SNA	
47	JC70-00311A	IPR-P-GROUND_TR	1	SNA	
48	JC65-00042A	TERMINAL-CON	1	SA	
49	JC65-00041A	TERMINAL-SUPPLY	1	SA	
50	JC65-00043A	TERMINAL-CR	1	SA	
51	JC70-00335A	IPR-P_GROUND_DRIVE2	1	SNA	
52	JC70-00458A	IPR-P-GROUND_GUIDE PAPER	1	SNA	
53	JC72-00143A	PMO-GEAR_EXIT_DRV16	2	SNA	
54	JC72-00382B	PMO-BUSHING FEED	7	SA	
55	JC72-00974A	PMO-ACTUATOR CVR OPEN	1	SA	
56	JC72-00975A	PMO-ACTUATOR EMPTY	1	SA	
57	JC93-00110A	FRAME-LOWER ACTUATOR FEED	1	SA	
57-1	6107-001164	SPRING-TS	1	SA	
57-2	JC72-00976A	PMO-ACTUATOR FEED	1	SA	
58	JC93-00109A	FRAME-LOWER ACTUATOR MANUAL	1	SA	
58-1	6107-001165	SPRING-TS	1	SA	
58-2	JC72-00977A	PMO-ACTUATOR MANUAL	1	SA	
59	JC97-03141A	MEA UNIT-GEAR_PICKUP	1	SA	
59-1	6107-001167	SPRING-CS	1	SA	
59-2	JC72-00979A	PMO-GEAR PICK_UP A	1	SC	
59-3	JC72-00980A	PMO-GEAR PICK_UP B	1	SC	

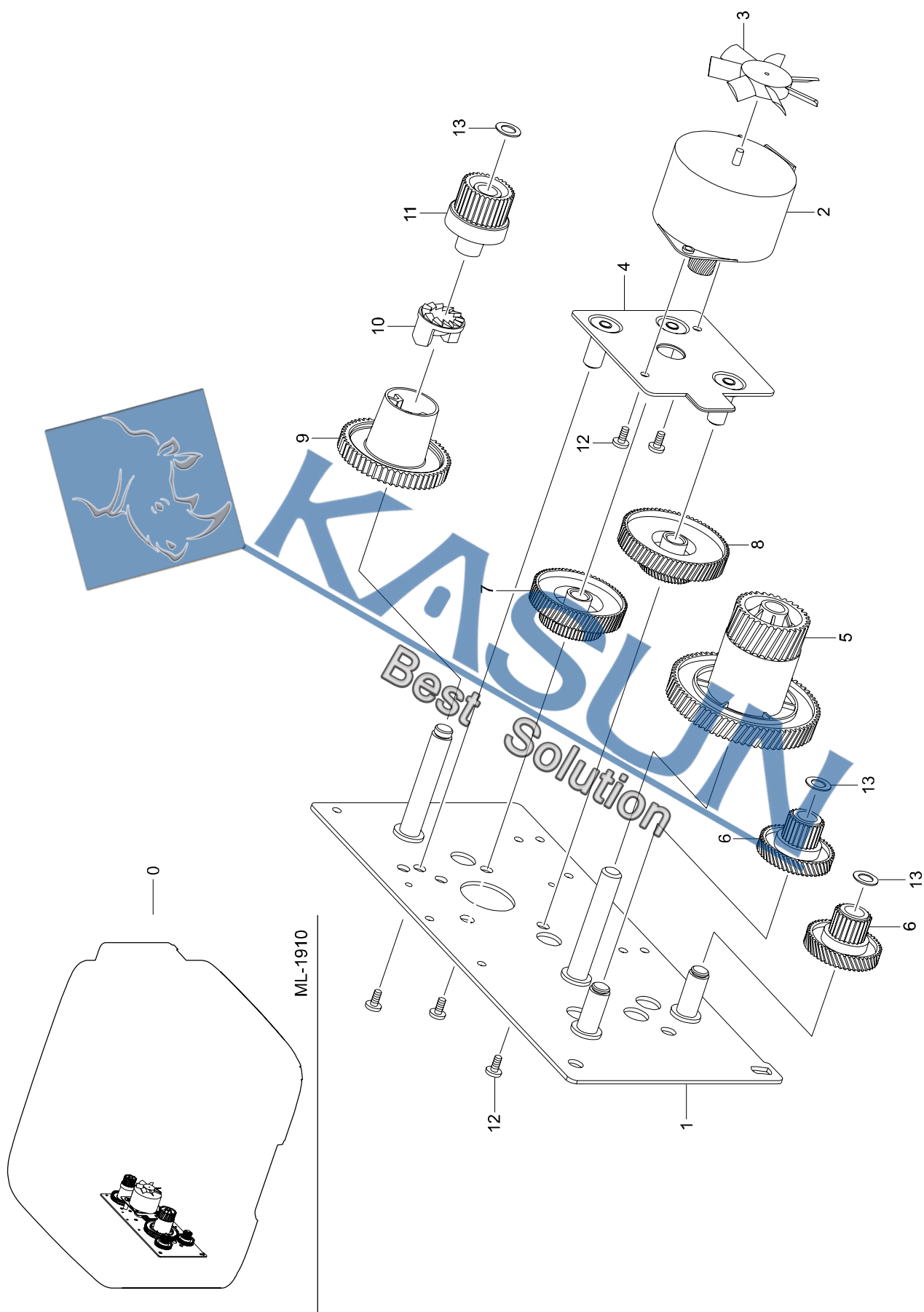
Main Frame Parts List

Drawer#	SEC_Code	Description	QT'y	Service	Remark
61	JC72-00983A	PMO-LOCKER CST	2	SA	
62	JC72-00984A	PMO-PLATE GUIDE DEVE_L	1	SA	
63	JC72-00985A	PMO-PLATE GUIDE DEVE_R	1	SA	
66	JC75-00049A	MEC-TERMINAL	4	SA	
67	JC65-00019A	TERMINAL-CRUM	4	SA	
68	JC97-01788A	MEA UNIT-CLUTCH	1	SA	
68-1	6107-001171	SPRING-TS	1	SA	
68-2	JC66-00393A	GEAR-FEED 1	1	SA	
68-3	JC66-00398A	SHAFT-FEED	1	SA	
68-4	JC72-00978A	PMO-COLLAR_SPRING	1	SA	
68-5	JC72-00981A	PMO-HUB CLUTCH	1	SNA	
73	0604-001393	PHOTO-INTERRUPTER	1	SA	
74	JC70-00312A	IPR-P-TERMINAL CON	1	SA	
75	JC61-03440A	BRACKET-BUSH_TR L	1	SA	
76	JC93-00085A	FRAME BASE-PICK UP	1	SA	
77	JC93-00108A	FRAME-FRONT GUIDE PAPER	1	SA	
77-1	JC61-00718A	GUIDE-P-PAPER	1	SA	
77-2	JC63-02483A	SHEET-GUIDE_PAPER	1	SA	
78	JC93-00083A	DRIVE MAIN-BRACKET	1	SA	ML-1910

SA : SERVICE AVAILABLE, SNA : SERVICE not AVAILABLE

Drawer#	SEC_Code	Description	QT'y	Service	Remark
78	JC93-00003A	DRIVE MAIN-BRACKET	1	SA	ML-2580N
79	JC97-02585A	LSU	1	SNA	
80	JC93-01107A	FRAME-ROLLER DECURL	2	SA	
80-1	JC61-01172A	HOLDER-M-EXIT F/DOWN	1	SNA	
80-2	JC66-007307A	ROLLER-M-EXIT FR	1	SA	
80-3	JC63-10824A	ROLLER-M-EXIT MAIN	1	SA	
80-4	6107-001163	SPRING-CS	1	SA	
81	JC93-00107B	FRMAE-ROLLER DECURL	2	SA	
81-1	JC61-02702B	HOLDER-EXIT ROLLER			
80-2	JC66-00830A	ROLLER-M-EXIT FR	1	SA	
80-3	JC66-00824A	ROLLER-M-EXIT MAIN	1	SA	
80-4	6107-001163	SPRING-CS	1	SA	
84	JC39-01066A	HARNES-BINFULL	1	SA	
85	JC39-01067A	HARNES-LSU	1	SA	
86	JC39-01083A	HARNES-STEP_MOTOR_CLUTCH	1	SA	ML-1910
86	JC39-01080A	HARNES-BLDC_MOTOR_CLUTCH	1	SA	ML-2580N
87	JC39-01081A	HARNES-CRUM	1	SA	
88	JC39-01228A	HARNES-OPE	1	SNA	

7. Main Drive Bracket (ML-1910)



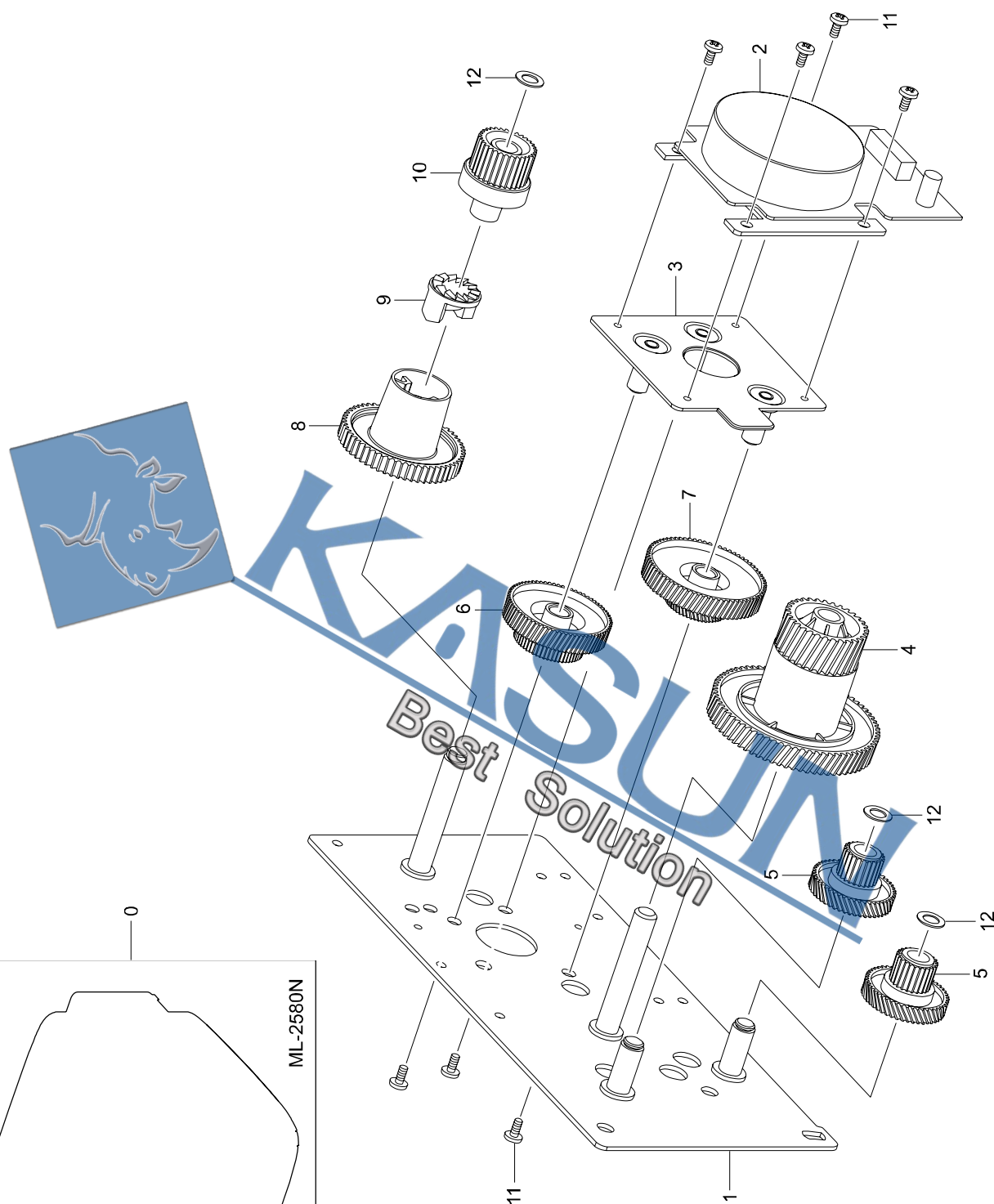
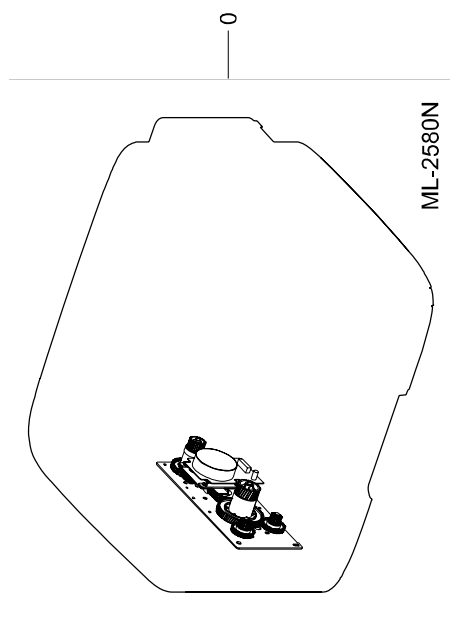
Main Drive Bracket (ML-1910) Parts List

SA : SERVICE AVAILABLE, SNA : SERVICE not AVAILABLE

Drawer#	SEC_Code	Description	QT'y	Service	Remark
0	JC93-00083A	DRIVE MAIN-BRACKET	1	SA	ML-1910
1	JC61-00598B	BRACKET-P-GEAR 1400	1	SC	
2	JC31-00028D	MOTOR STEP	1	SNA	
3	JC72-00825A	PMO-IMPELLER_DRV	1	SA	
4	JC61-03395A	BRACKET-MOTOR_STEP	1	SA	
5	JC66-02316A	GEAR-RDCN_OPC	1	SA	
6	JC66-00389A	GEAR-RDCN 57/18	2	SA	

Drawer#	SEC_Code	Description	QT'y	Service	Remark
7	JC66-00392A	GEAR-RDCN 90/31	1	SA	
8	JC66-00390A	GEAR-RDCN 103/41	1	SA	
9	JC66-00393A	GEAR-DRV FUSER OUT	1	SA	
10	JC66-00340A	GEAR-HUB CLUTCH	1	SA	
11	JC66-01202A	GEAR-DRV FUSER IN	1	SA	
12	6013-000269	SCREW-TAPTYPE	5	SA	
13	6031-000023	WASHER-PLAIN	3	SA	

8. Main Drive Bracket (ML-2580N)



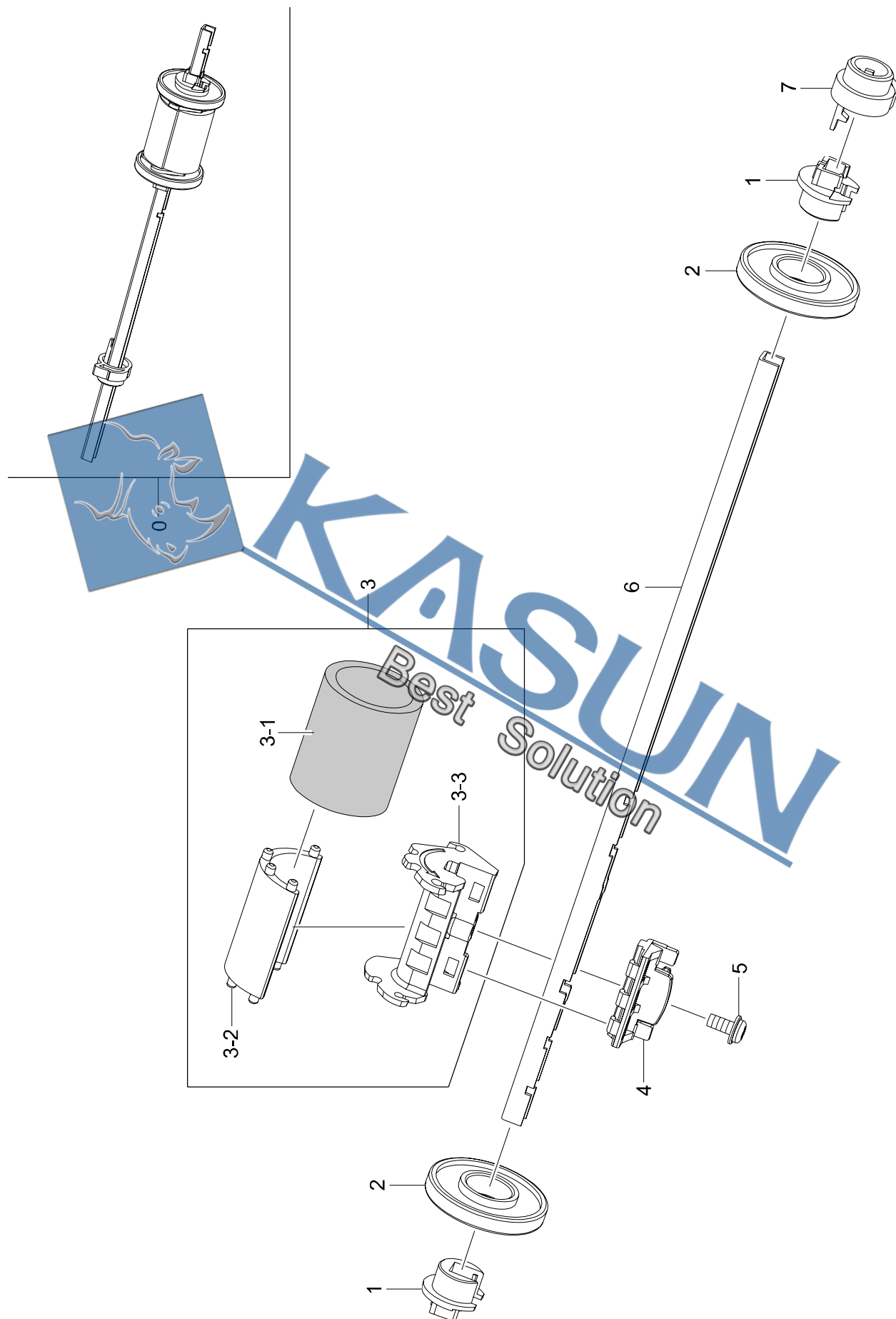
Main Drive Bracket (ML-2580N) Parts List

SA : SERVICE AVAILABLE, SNA : SERVICE not AVAILABLE

Drawer#	SEC_Code	Description	QT'y	Service	Remark
0	JC93-00003A	DRIVE MAIN-BRACKET	1	SA	ML-2525/2580N
1	JC61-00598B	BRACKET-P-GEAR 1400	1	SC	
2	JC31-00122A	MOTOR BLDC	1	SNA	
3	JC61-03396A	BRACKET-MOTOR_BLDC	1	SA	
4	JC66-02316A	GEAR-RDCN_OPC	1	SA	
5	JC66-00389A	GEAR-RDCN 57/18	2	SA	
6	JC66-00392A	GEAR-RDCN 90/31	1	SA	

Drawer#	SEC_Code	Description	QT'y	Service	Remark
7	JC66-00390A	GEAR-RDCN 103/41	1	SA	
8	JC66-01203A	GEAR-DRV FUSER OUT	1	SA	
9	JC66-01110A	GEAR-HUB CLUTCH	1	SA	
10	JC66-01202A	GEAR-DRV FUSER IN	1	SA	
11	603-007269	SCREW-TAPTYPE	7	SA	
12	603-11000023	WASHER-PLAIN	3	SA	

9. Base Frame-Pick Up



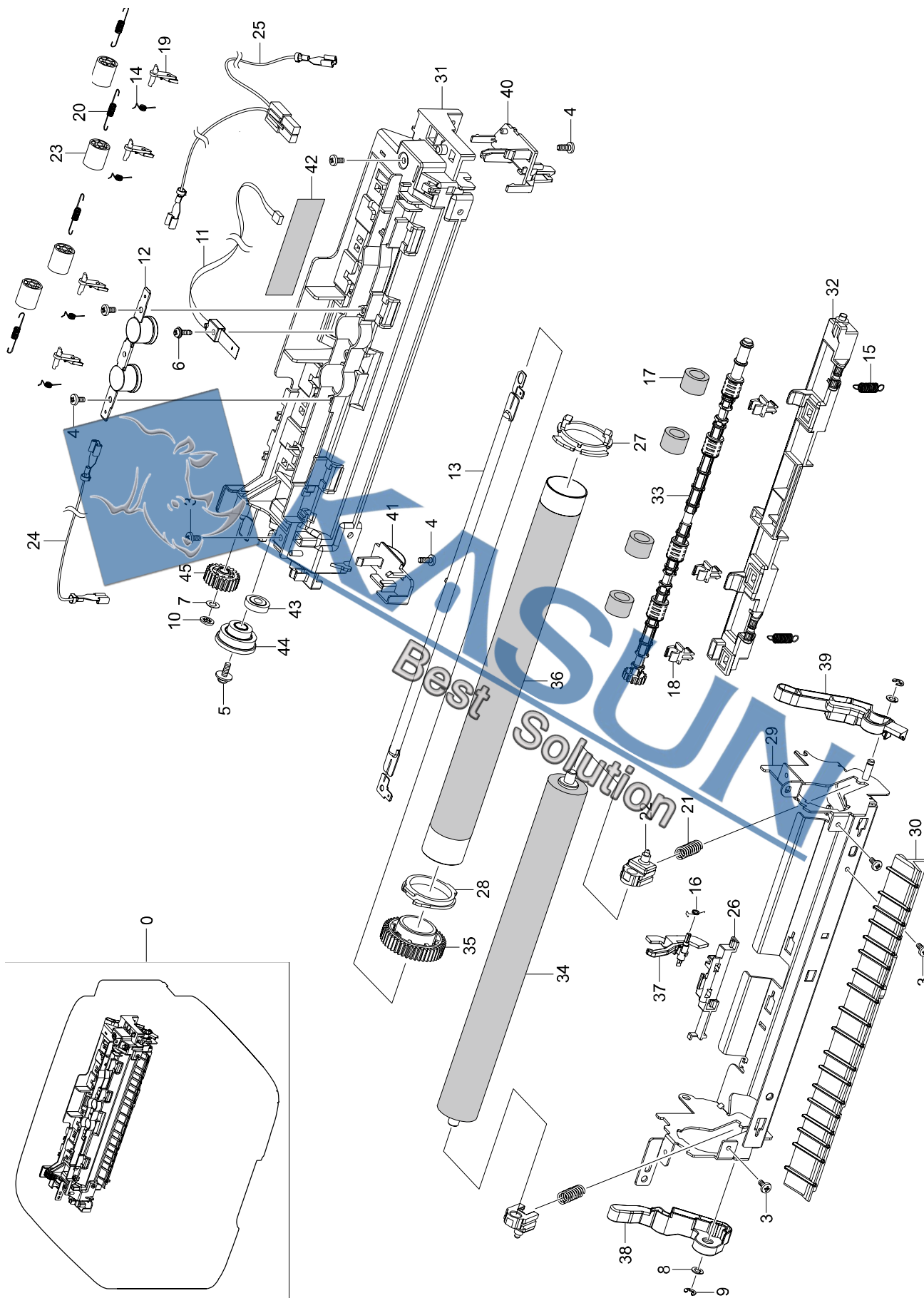
Base Frame-Pick Up Parts List

SA : SERVICE AVAILABLE, SNA : SERVICE not AVAILABLE

Drawer#	SEC_Code	Description	QT'y	Service	Remark
0	JC93-00085A	FRAME BASE-PICK UP	1	SA	
1	JC61-03477A	STOPPER-PICK_UP	2	SA	
2	JC72-00982A	PMO-IDLE PICK_UP	2	SA	
3	JC93-00087A	FRAME BASE-PICK UP RUBBER	1	SA	
3-1	JC73-00315A	RUBBER-PICK_UP	1	SA	
3-2	JC61-03514A	HOUSING-PICKUP_RUB	1	SA	

Drawer#	SEC_Code	Description	QT'y	Service	Remark
3-3	JC61-03435A	HOUSING-PICKUP	1	SA	
4	JC61-03485A	HOLDER-PICKUP	1	SA	
5	6003-111261	SCREW-TAPTYPE	1	SNA	
6	JC56-00399A	SHAFT-P-PICK_UP	1	SA	
7	JC61-005667	BUSH-M-PICK_UP L	1	SA	

10. Fuser



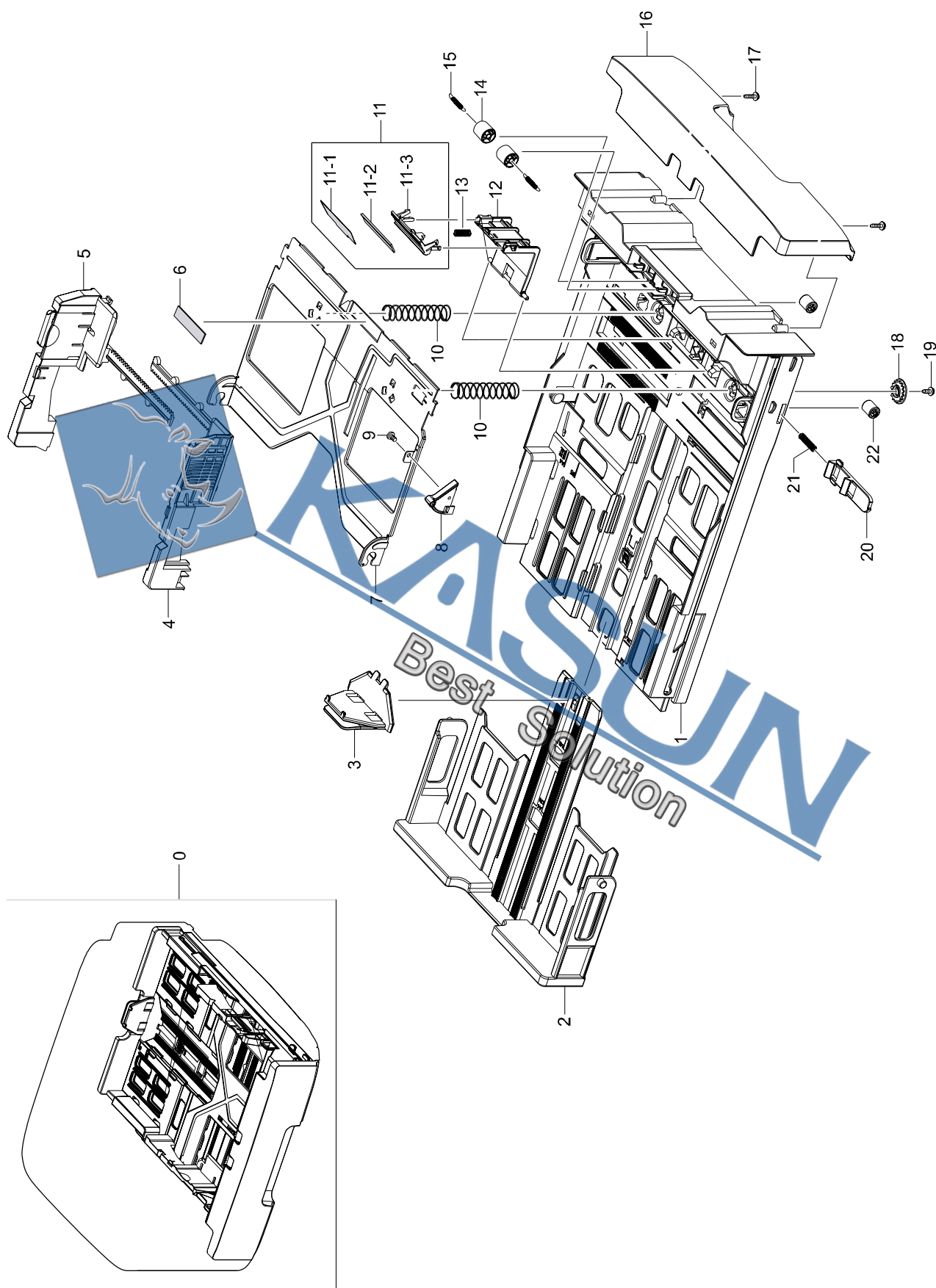
Fuser Parts List

SA : SERVICE AVAILABLE, SNA : SERVICE not AVAILABLE

Drawer#	SEC_Code	Description	QTY	Service	Remark
0	JC91-00946A	FUSER	1	SA	110V / A type
0	JC91-00946B	FUSER	1	SA	220V / B type
0	JC91-00945A	FUSER	1	SA	110V / C type
0	JC91-00945B	FUSER	1	SA	220V / D type
3	6003-000269	SCREW-TAPTYPE	5	SA	
4	6003-000282	SCREW-TAPTYPE	4	SNA	
5	6006-001078	SCREW-TAPTYPE	1	SNA	
6	6003-000196	SCREW-TAPTYPE	1	SA	
7	6031-001051	WASHER-PLAIN	1	SNA	
8	6031-001584	WASHER-PLAIN	2	SA	
9	6044-000159	RING-C	2	SA	
10	6044-000001	RING-CS	1	SA	
11	1404-001447	THERMISTOR-NTCASSY	1	SA	
12	4712-001031	THERMOSTAT	1	SA	
13	4713-001211	LAMP-HALOGEN	1	SA	110V
13	4713-001212	LAMP-HALOGEN	1	SA	220V
14	6107-001800	SPRING-TS	4	SA	
15	6107-001802	SPRING-ES	2	SA	
16	6107-001165	SPRING-TS	1	SA	
17	JC73-00017A	RMO-RUBBER_EXIT	4	SA	
18	JC72-00382A	PMO-BUSHING TX	3	SNA	
19	JC61-03685A	GUIDE-CLAW	4	SNA	
20	JC61-70976A	SPRING ETC-FUSER EXIT	4	SNA	
21	JC61-00056A	SPRING ETC-PR(7300)	2	SA	
22	JC61-03473A	BUSH-PR HIGH	2	SNA	
23	JC72-40361A	PMO-ROLLER_EXIT	4	SNA	

Drawer#	SEC_Code	Description	QTY	Service	Remark
24	JC39-00819A	HARNES-FUSER JOINT	1	SA	
25	JC39-07082A	HARNES-FUSER AC	1	SA	
26	JC61-00341A	HO/DER-ACTUATOR	1	SA	
27	JC51-00887A	BUSH-M-HR R_R2	1	SA	
28	JC61-00348A	BUSH-M-HR L_R2	1	SA	
29	JC61-03449A	FRAME-FUSER	1	SNA	
30	JC61-03450A	GUIDE-INPUT	1	SNA	
31	JC63-02412A	COVER-FUSER	1	SNA	
32	JC63-02413A	COVER-FUSER DUMMY	1	SNA	
33	JC66-00380A	ROLLER-M-EXIT FIUP	1	SA	
34	JC66-00600A	ROLLER-PRESSURE	1	SA	A/B Type
34	JC66-00600B	ROLLER-PRESSURE	1	SA	C/D Type
35	JC66-01254A	GEAR-FUSER	1	SA	
36	JC66-01256A	ROLLER-HEAT	1	SA	A/B Type
36	JC66-01256B	ROLLER-HEAT	1	SA	C/D Type
37	JC66-02364A	ACTUATOR-EXIT	1	SNA	
38	JC66-02365A	LEVER-LINK JAM L	1	SNA	
39	JC66-02366A	LEVER-LINK JAM R	1	SNA	
40	JC67-00414A	CAP-FUSER LAMP R	1	SNA	
41	JC67-00415A	CAP-FUSER LAMP L	1	SNA	
42	JC68-01581B	LABEL-CAUTION	1	SNA	110V
42	JC68-01581C	LABEL-CAUTION	1	SNA	220V
43	JC72-00143A	PMO-GEAR_EXIT_DRV16	1	SNA	
44	JC66-02317A	GEAR-RDCN_EXIT	1	SA	
45	JC66-00396A	GEAR-IDLE 23	1	SA	

11. Cassette



Cassette Parts List

SA : SERVICE AVAILABLE, SNA : SERVICE not AVAILABLE

Drawer#	SEC_Code	Description	QT'y	Service	Remark
0	JC90-00939A	CASSETTE	1	SA	ML-1915/2525
0	JC90-00939B	CASSETTE	1	SA	ML-1910/2580N
1	JC61-03343A	FRAME-CASSETTE	1	SNA	
2	JC61-03341A	GUIDE-EXTENSION CST	1	SNA	ML-1915/2525
2	JC61-03341B	GUIDE-EXTENSION CST	1	SNA	ML-1910/2580N
3	JC72-00971A	PMO-EXTENSION SMALL	1	SA	
4	JC70-00300A	ADJUST-M-CASSETTE_L	1	SA	
5	JC70-00301A	ADJUST-M-CASSETTE_R	1	SA	
6	JC73-00141A	RPR-PAD CASSETTE	1	SA	
7	JC61-00603A	PLATE-P-KNOCK_UP	1	SNA	
8	JC66-00719A	CAM-M-KNOCK UP	1	SA	
9	6003-000261	SCREW-TAPTYPE	1	SNA	
10	6107-001166	SPRING-CS	2	SA	
11	JC90-00941A	CASSETTE-HOLDER PAD	1	SA	
11-1	JC63-00290A	SHEET-HOLDER PAD	1	SA	

Drawer#	SEC_Code	Description	QT'y	Service	Remark
11-2	JC73-00140A	RPR-FRICTION PAD	1	SA	
11-3	JC61-03344A	HOLDER-PAD	1	SA	
12	JC61-03343A	HOLDING-HOLDER PAD	1	SA	
13	JC61-70911A	SPRING ETC-EXIT ROLL FD	1	SA	
14	JC66-00529A	ROLLER-IDLE FEED	2	SA	ML-1915/2525
14	JC66-00529A	ROLLER-MIDLE FEED	2	SA	ML-1910/2580N
15	6107-001047	SPRING-ES	2	SA	
16	JC68-02341A	COVER-CASSETTE	1	SNA	ML-1915/2525
16	JC63-02341B	COVER-CASSETTE	1	SNA	ML-1910/2580N
17	6003-000196	SCREW-TAPTYPE	2	SA	
18	JC66-40003A	GEAR-PINION	1	SA	
19	6003-000264	SCREW-TAPTYPE	1	SNA	
20	JC72-00972A	PMO-PLATE_LOCKER	1	SA	
21	JC61-70531A	SPRING ETC-LOCKER,PLATE	1	SA	
22	JC72-40981A	PMO-ROLLER UPPER DP	2	SA	